

**SPOTSYLVANIA COUNTY VIRGINIA  
2006 CONTROL SURVEY (RE-ADJUSTED 2008)**

JN 105-138

HORIZONTAL DATUM: NAD 83(2007)  
 VERTICAL DATUM: NAVD 88  
 COORDINATE SYSTEM: VIRGINIA STATE PLANE, NORTH ZONE  
 UNITS: U.S. SURVEY FOOT

HORIZONTAL ORDER: FIRST  
 VERTICAL ORDER: THIRD

COUNTY	NAME OF STATION	YEAR
SPOTSYLVANIA	BERKELEY	2006
N: 6728014.50	LAT: 38° 07' 12.34242" N	COMBINED FACTOR: 0.99998582
E: 11737278.25	LONG: 077° 36' 56.99397" W	∅ ANGLE: 0° 33' 06.6"
ELEVATION: 293.03' (ESTABLISHED BY GPS)		

DISTANCES AND DIRECTIONS TO AZIMUTH MARKS		
STATION	GROUND DISTANCE	TRUE AZIMUTH
BERKELEY AZ	593.28'	105°25'42"

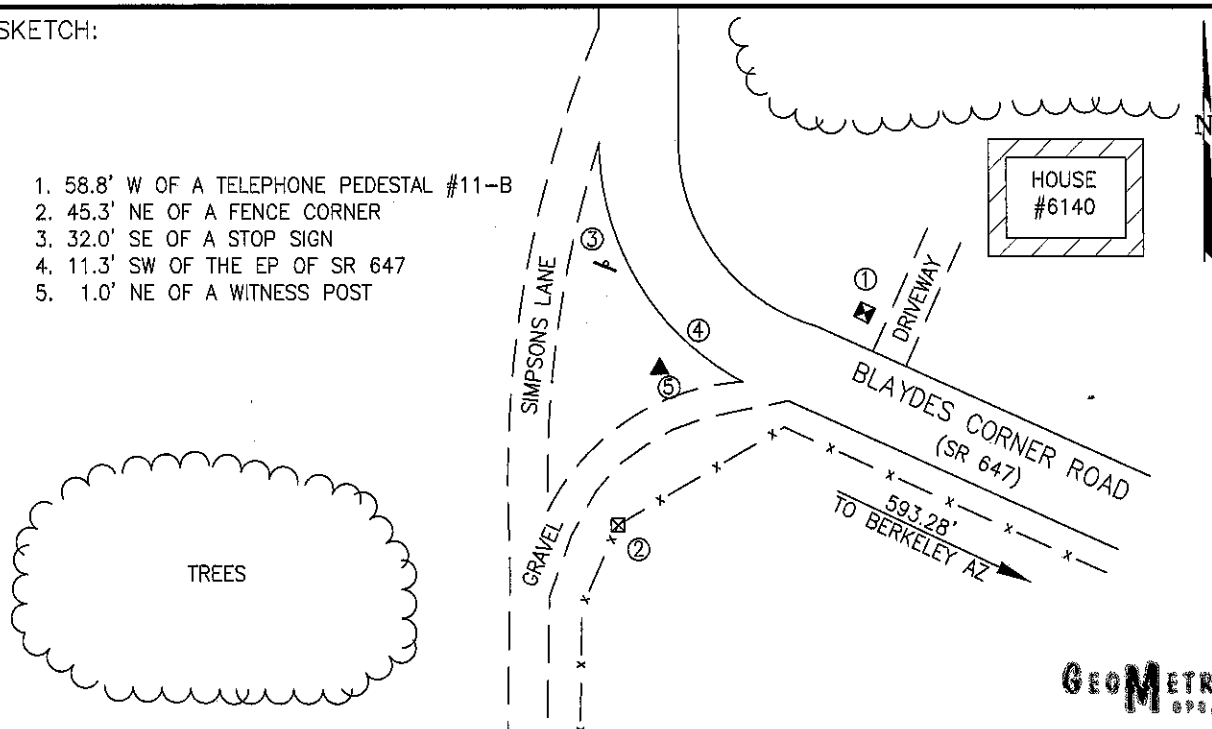
THE STATION IS LOCATED ABOUT 9.7 KM (6.0 MILES) SOUTH OF SPOTSYLVANIA, AND 8.4 KM (5.2 MILES) WEST OF THORNBURG.

TO REACH THE STATION FROM THE INTERSECTION OF INTERSTATE 95 AND MUDD TAVERN ROAD (AT EXIT 118), GO WEST ON MUDD TAVERN ROAD FOR 0.9 KM (0.55 MILE) TO ITS INTERSECTION WITH US HIGHWAY 1 (JEFFERSON DAVIS HIGHWAY). CONTINUE ON MUDD TAVERN ROAD (WHICH TURNS INTO MORRIS ROAD) FOR 7.2 KM (4.5 MILES) TO ITS INTERSECTION WITH SR 738 (PARTLOW ROAD). TURN LEFT AND GO SOUTH ON SR 738 FOR 3.2 KM (2.0 MILES) TO ITS INTERSECTION WITH SR 647 (BLAYDES CORNER ROAD). TURN LEFT AND GO SOUTH ON SR 647 FOR 0.2 KM (0.1 MILE) TO ITS INTERSECTION WITH SIMPSONS ROAD AND THE STATION ON THE RIGHT JUST PAST THE INTERSECTION.

THE STATION IS A STANDARD SPOTSYLVANIA COUNTY, VA ALUMINUM SURVEY DISK SET INTO A Poured IN PLACE CONCRETE MONUMENT 10 INCHES IN DIAMETER, FLUSH WITH THE GROUND SURFACE AND STAMPED BERKELEY 2006.

SKETCH:

1. 58.8' W OF A TELEPHONE PEDESTAL #11-B
2. 45.3' NE OF A FENCE CORNER
3. 32.0' SE OF A STOP SIGN
4. 11.3' SW OF THE EP OF SR 647
5. 1.0' NE OF A WITNESS POST



**GEOMETRICS**  
GPS, INC.