

**SPOTSYLVANIA COUNTY VIRGINIA  
2003-2004 CONTROL SURVEY**

JN 103-060

HORIZONTAL DATUM: NAD 83(2007) (REVISED 8-08)  
 VERTICAL DATUM: NAVD 88  
 COORDINATE SYSTEM: VIRGINIA STATE PLANE, NORTH ZONE  
 UNITS: U.S. SURVEY FOOT

HORIZONTAL ORDER: FIRST  
 VERTICAL ORDER: THIRD

COUNTY	NAME OF STATION	YEAR
SPOTSYLVANIA	TIMBER AZ MK	2004
N: 6764133.51	LAT: 38° 13' 05.01595" N	COMBINED FACTOR: 0.99997254
E: 11779596.52	LONG: 77° 28' 02.39305" W	⊖ ANGLE: 0° 38' 40"
ELEVATION: 232.97' (ESTABLISHED BY GPS)		

DISTANCES AND DIRECTIONS TO AZIMUTH MARKS		
STATION	GROUND DISTANCE	TRUE AZIMUTH
TIMBER	1787.51'	169° 02' 32"

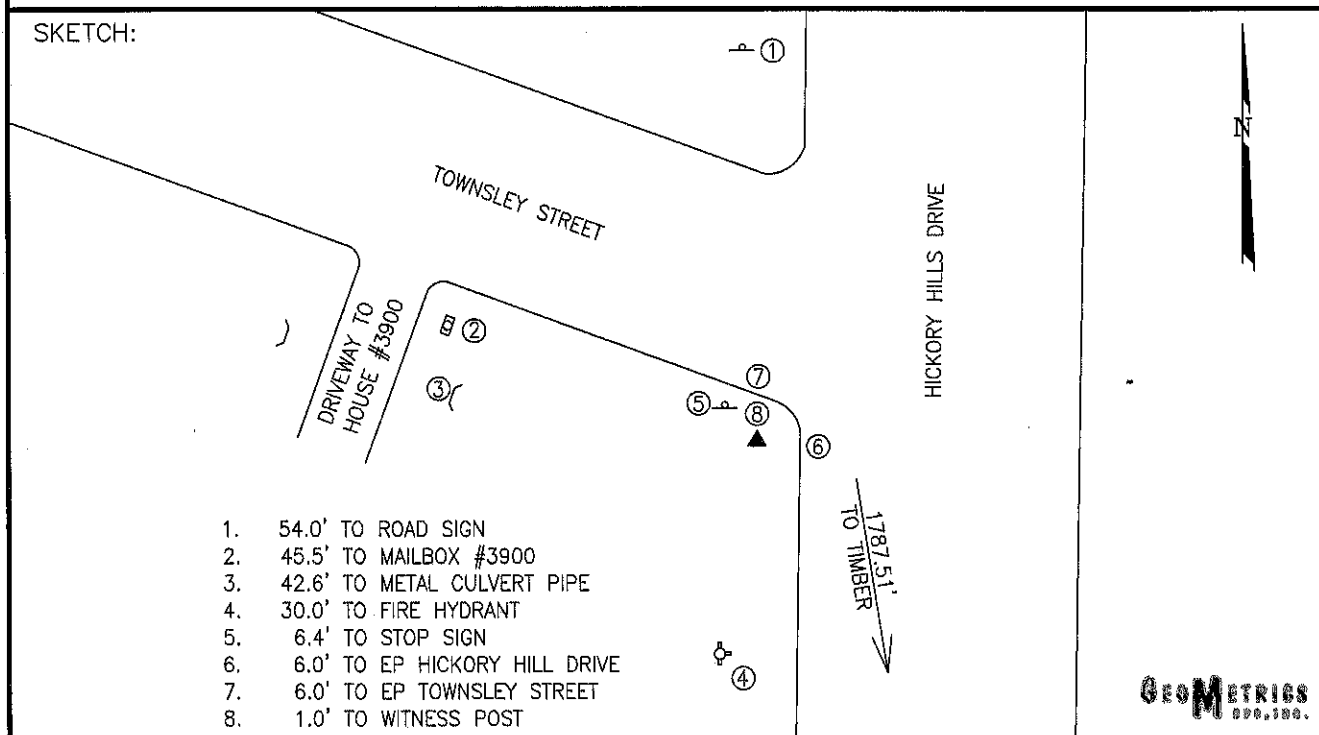
THE STATION IS LOCATED IN SPOTSYLVANIA COUNTY, VIRGINIA, APPROXIMATELY 10.8 KM (6.7 MILES) EAST FROM THE SPOTSYLVANIA COURTHOUSE AND 9.0 KM (5.6 MILES) SOUTH OF THE CITY OF FREDERICKSBURG.

TO REACH THE STATION FROM THE INTERSECTION OF US HIGHWAY 17 SOUTH AND STATE ROUTE 608 (MASSAPONAX CHURCH ROAD) GO SOUTHWESTERLY ON STATE ROUTE 608 FOR 1.8 KM (1.1 MILES) TO ITS INTERSECTION WITH STATE ROUTE 1012 (HICKORY HILL DRIVE). TURN RIGHT AND GO NORTH ON HICKORY HILL DRIVE FOR 0.5 KM (0.3 MILE) TO ITS INTERSECTION WITH TOWNSLEY STREET AND THE STATION ON THE LEFT.

STATION TIMBER AZ IS INTERVISIBLE WITH STATION TIMBER.

THE STATION IS A 3 1/2 INCH SPOTSYLVANIA COUNTY, VA ALUMINUM SURVEY DISK SET INTO A Poured IN PLACE CONCRETE MONUMENT 10 INCHES IN DIAMETER, RECESSED THREE INCHES BELOW THE GROUND SURFACE AND STAMPED TIMBER AZ 2004.

SKETCH:



DRAWN BY: BCL

CHECKED BY: LLR

DATE: 04/2004

APPROX. SCALE: 1" = 25'