

SPOTSYLVANIA COUNTY, VIRGINIA W.O. 95007
 E911 GPS SURVEY (RE-ADJUSTED 2008)
 MAP PROJECTION: LAMBERT ORDER OF SURVEY: FIRST
 NAD 83(2007) * VIRGINIA STATE PLANE COORDINATE SYSTEM * NORTH ZONE

COUNTY	NAME OF STATION	YEAR
SPOTSYLVANIA	RAPP AZ MK	1995

N: 6797965.54	E: 11767167.80	LAT.: 38°18'40.80006"	LONG.: 77°30'33.54652"
GRID FACTOR: 0.99996258	SEA LEVEL FACTOR: 0.99999278	ϕ ANGLE: +0°37'05.89"	

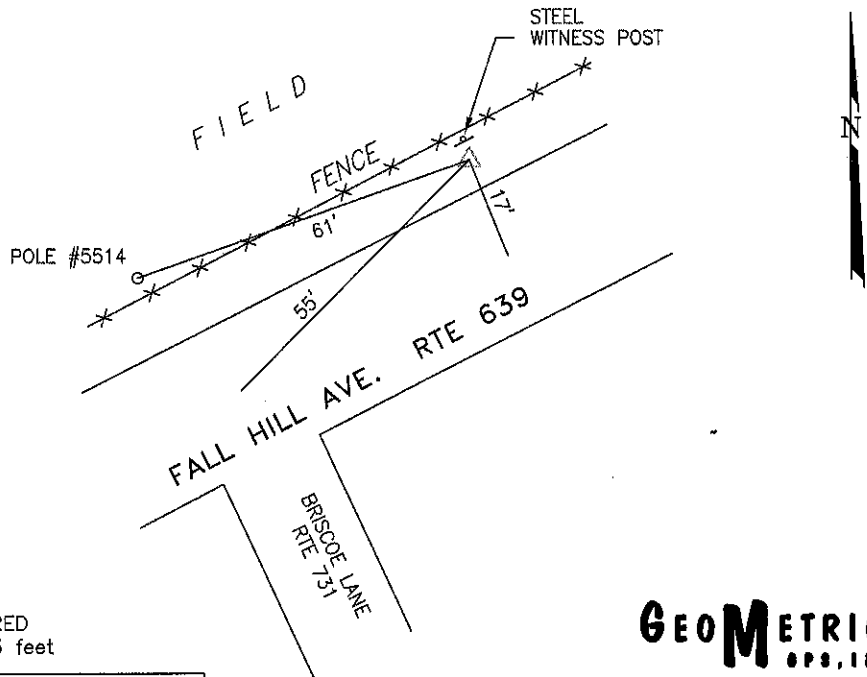
ESTABLISHED BY: GeoMetrics GPS, INC.	YEAR 1995	DISTANCES AND DIRECTIONS TO REFERENCE MARKS AND PROMINENT OBJECTS OBSERVED AT STATION	
		OBJECT	DISTANCE--FT.
VERTICAL DATUM NAVD 88			
ELEVATION (FT.) 257.27			

THE STATION IS LOCATED ABOUT 8.8 KM (5.5 MILES) NORTHEAST OF CHANCELLOR, AND 3.7 KM (2.3 MILES) NORTHWEST OF FREDERICKSBURG.

TO REACH THE STATION FROM THE INTERSECTION OF US HIGHWAY 1 (JEFFERSON DAVIS HIGHWAY) AND US HIGHWAY 17 (WARRENTON ROAD), IN FALMOUTH, GO SOUTH ON US 1 FOR 1.2 KM (0.75 MILE) TO ITS INTERSECTION WITH SR 639 (FALL HILL AVE). TURN RIGHT AND GO WEST ON SR 639 FOR 2.7 KM (1.65 MILES) TO ITS INTERSECTION WITH I-95 BRIDGE. CONTINUE WEST ON SR 639 OVER THE BRIDGE FOR 0.3 KM (0.2 MILE) TO THE STATION ON THE RIGHT.

THE STATION IS A STANDARD CGS BRASS SURVEY DISK SET INTO A POURED IN PLACE CONCRETE MONUMENT, PROJECTING 3" ABOVE THE GROUND SURFACE AND STAMPED RAPP 1959.

SKETCH OF STATION:



THIS SURVEY DATA PREPARED
 USING 1 meter = 3.280833 feet

PREPARED BY: EJP	DATE: AUG '95
CHECKED BY: DAR	DATE: AUG '95

GEOMETRICS
GPS, INC.
 355 BUTLER ROAD
 FREDERICKSBURG, VIRGINIA
 (540) 372-3499