

**SPOTSYLVANIA COUNTY VIRGINIA
2007 GEODETIC CONTROL SURVEY**

JN 107-065

HORIZONTAL DATUM: NAD 83(2007)
VERTICAL DATUM: NAVD 88
COORDINATE SYSTEM: VIRGINIA STATE PLANE, NORTH ZONE
UNITS: U.S. SURVEY FOOT

HORIZONTAL ORDER: FIRST
VERTICAL ORDER: THIRD

COUNTY	NAME OF STATION	YEAR
SPOTSYLVANIA	GRAND HILL	2007
N: 6742890.79	LAT: 38° 09' 43.56033" N	COMBINED FACTOR: 0.99996491
E: 11689001.52	LONG: 77° 46' 59.63396" W	∅ ANGLE: 0° 26' 50"
ELEVATION: 417.37'	(ESTABLISHED BY GPS)	
DISTANCES AND DIRECTIONS TO AZIMUTH MARKS		
STATION	GROUND DISTANCE	TRUE AZIMUTH
BROOKS	1346.23	308° 08' 25"

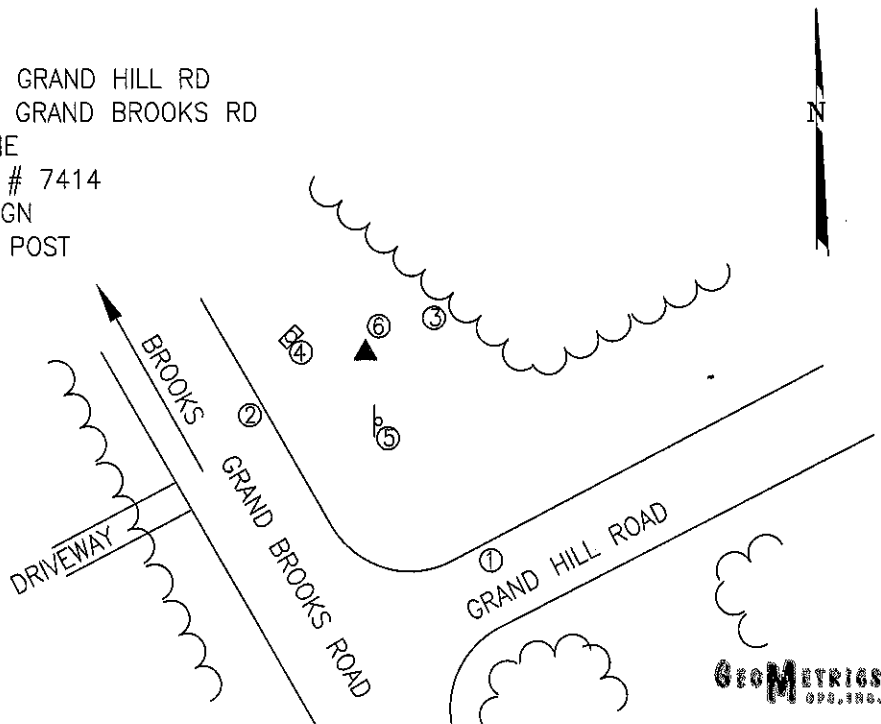
THE STATION IS LOCATED ABOUT 17.4 KM (10.8 MILES) WEST OF SPOTSYLVANIA, AND 17.0 KM (10.6 MILES) SOUTH OF LOCUST GROVE

TO REACH THE STATION FROM THE INTERSECTION OF SR 208 (COURTHOUSE ROAD) AND SR 613 (BROCK ROAD), AT THE SPOTSYLVANIA COURTHOUSE, GO NORTH ON SR 613 FOR 0.8 KM (0.5 MILE) TO ITS INTERSECTION WITH SR 608 (ROBERT E LEE DRIVE). TURN LEFT AND GO WEST ON SR 608 FOR 1.9 KM (1.2 MILES) TO ITS INTERSECTION WITH SR 648 (BLOCKHOUSE ROAD). TURN LEFT AND GO SOUTH ON SR 648 FOR 4.7 KM (2.9 MILES) TO ITS INTERSECTION WITH SR 208 (COURTHOUSE ROAD). TURN RIGHT AND GO WEST ON SR 208 FOR 7.1 KM (4.4 MILES) TO ITS INTERSECTION WITH SR 718 (HEBRON CHURCH ROAD). CONTINUE WEST ON SR 208 FOR 6.6 KM (4.1 MILES) TO ITS INTERSECTION WITH SR 601 (LAWYERS ROAD). TURN RIGHT AND GO NORTH ON SR 601 FOR 2.6 KM (1.6 MILES) TO ITS INTERSECTION WITH SR 721 (GRAND BROOKS ROAD). TURN RIGHT AND GO NORTH ON SR 721 FOR 3.9 KM (2.4 MILES) TO ITS INTERSECTION WITH GRAND HILL ROAD AND THE STATION ON THE RIGHT AT THE INTERSECTION.

THE STATION IS A STANDARD SPOTSYLVANIA COUNTY, VA ALUMINUM SURVEY DISK SET INTO A Poured IN PLACE CONCRETE MONUMENT 10 INCHES IN DIAMETER, FLUSH WITH GROUND SURFACE AND STAMPED GRAND HILL 2007.

SKETCH:

1. 50.0' NW OF THE EP OF GRAND HILL RD
2. 26.0' NE OF THE EP OF GRAND BROOKS RD
3. 18.0' SW OF A TREE LINE
4. 16.8' E OF A MAIL BOX # 7414
5. 16.0' N OF A STREET SIGN
6. 1.0' SW OF A WITNESS POST



GEOMETRICS
SFC, INC.