

**SPOTSYLVANIA COUNTY VIRGINIA
2003 CONTROL SURVEY**

JN 103-009

HORIZONTAL DATUM: NAD 83(2007) (REVISED 8-08)
 VERTICAL DATUM: NAVD 88
 COORDINATE SYSTEM: VIRGINIA STATE PLANE, NORTH ZONE
 UNITS: U.S. SURVEY FOOT

HORIZONTAL ORDER: FIRST
 VERTICAL ORDER: THIRD

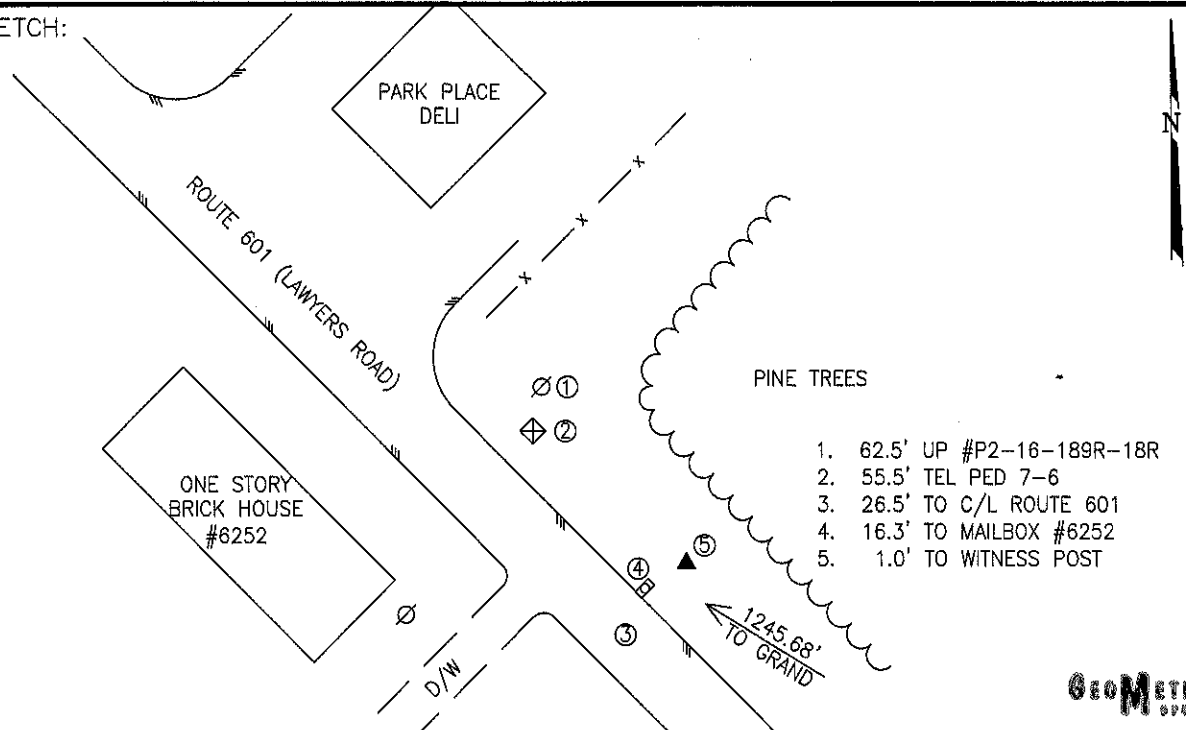
COUNTY	NAME OF STATION	YEAR
SPOTSYLVANIA	GRAND AZ	2003
N: 6731217.58	LAT: 38° 07' 48.14676" N	COMBINED FACTOR: 0.99997204
E: 11689254.39	LONG: 77° 46' 57.60998" W	∅ ANGLE: 0° 26' 52"
ELEVATION: 363.74' (ESTABLISHED BY GPS)		
DISTANCES AND DIRECTIONS TO AZIMUTH MARKS		
STATION	GROUND DISTANCE	TRUE AZIMUTH
GRAND	1245.68'	301° 57' 03"

THE STATION IS LOCATED IN SOUTHWESTERN SPOTSYLVANIA COUNTY, VIRGINIA. THE STATION IS ABOUT 11 MILES SOUTHWEST OF THE SPOTSYLVANIA COUNTY COURTHOUSE.

TO REACH THE STATION FROM THE INTERSECTION OF STATE ROUTE 606 (MORRIS ROAD) AND US HIGHWAY 1 (JEFFERSON DAVIS HIGHWAY) IN THORNBURG GO WESTERLY ON STATE ROUTE 606 FOR 7.2 KM (4.5 MILES) TO AN INTERSECTION. CONTINUE AND GO NORTHWESTERLY ON STATE ROUTE 208 (COURTHOUSE ROAD) FOR 3.7 KM (2.3 MILES) TO STATE ROUTE 648 (BLOCKHOUSE ROAD). CONTINUE NORTHWESTERLY ON STATE ROUTE 208 FOR 1.9 KM (1.2 MILES) TO AN INTERSECTION. TURN LEFT AND GO SOUTHWESTERLY ON STATE ROUTE 208 FOR 6.4 KM (4.0 MILES) TO STATE ROUTE 602 (MASSEY ROAD) AND A SHELL GAS STATION ON THE RIGHT. CONTINUE SOUTHWESTERLY ON STATE ROUTE 208 FOR 4.8 KM (3.0 MILES) TO AN INTERSECTION. TURN RIGHT AND GO NORTHWESTERLY ON STATE ROUTE 601 (LAWYERS ROAD) FOR 2.1 KM (1.3 MILES) TO THE STATION ON THE RIGHT ACROSS THE STREET FROM 6252 LAWYERS ROAD AND NEXT TO PARK PLACE DELI AT 6261 LAWYERS ROAD.

STATION GRAND AZ IS INTERVISIBLE WITH STATION GRAND. THE STATION IS A 3-1/2 INCH SPOTSYLVANIA COUNTY, VA, ALUMINUM SURVEY DISK SET INTO A POURED IN PLACE CONCRETE MONUMENT 8 INCHES IN DIAMETER FLUSH WITH THE GROUND SURFACE AND STAMPED GRAND AZ 2003.

SKETCH:



GEOMETRICS
SINCE 1988

DRAWN BY: BCL

CHECKED BY: LLR

DATE: 06/2003

APPROX. SCALE: 1" = 50'