

**SPOTSYLVANIA COUNTY VIRGINIA  
2002/2003 CONTROL SURVEY**

JN 102-080

HORIZONTAL DATUM: NAD 83(2007) (REVISED 8-08)  
 VERTICAL DATUM: NAVD 88  
 COORDINATE SYSTEM: VIRGINIA STATE PLANE, NORTH ZONE  
 UNITS: U.S. SURVEY FOOT

HORIZONTAL ORDER: FIRST  
 VERTICAL ORDER: THIRD

| COUNTY         | NAME OF STATION           | YEAR                        |
|----------------|---------------------------|-----------------------------|
| SPOTSYLVANIA   | GRACE AZ                  | 2002                        |
| N: 6784478.26  | LAT: 38° 16' 34.01880"N   | COMBINED FACTOR: 0.99995048 |
| E: 11697216.35 | LONG: 077° 45' 12.54720"W | ∅ ANGLE: 0° 27' 57"         |

ELEVATION: 431.71' (ESTABLISHED BY GPS)

DISTANCES AND DIRECTIONS TO AZIMUTH MARKS

| STATION | GROUND DISTANCE | TRUE AZIMUTH |
|---------|-----------------|--------------|
| GRACE   | 1106.83'        | 256° 04' 56" |

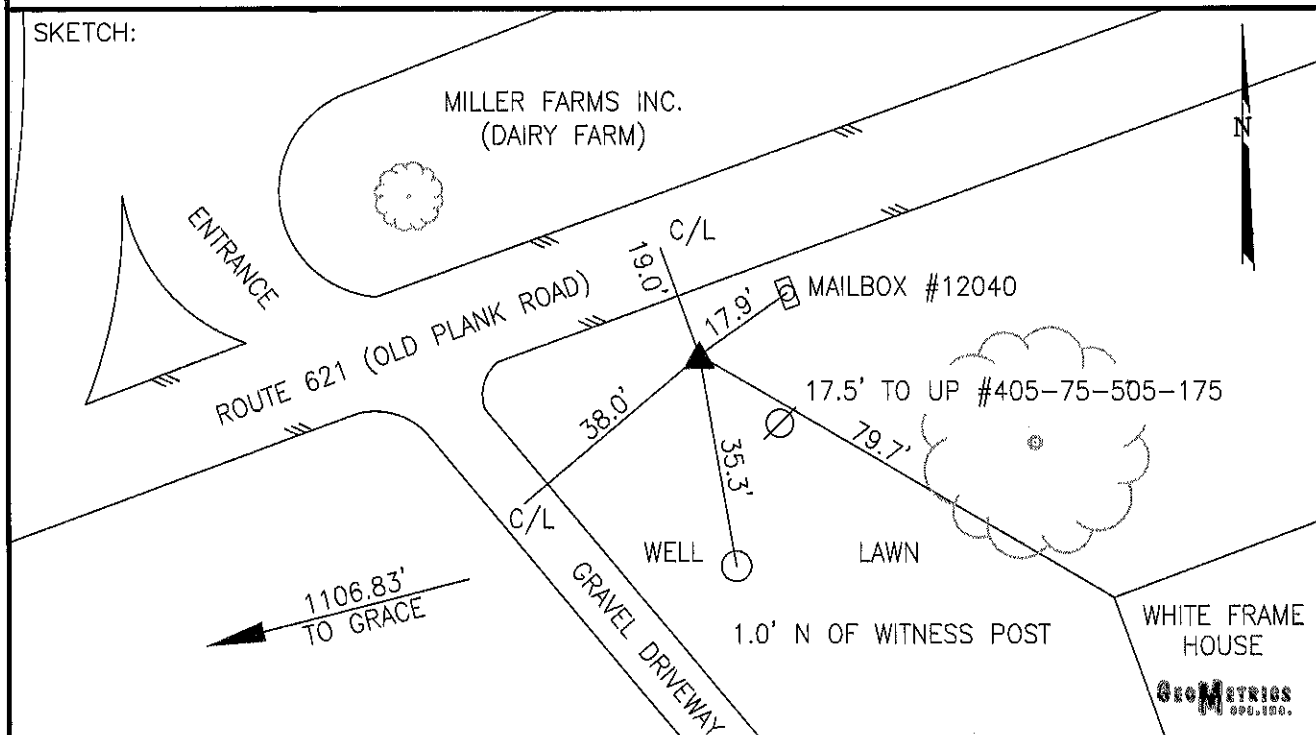
THE STATION IS LOCATED IN NORTH WESTERN SPOTSYLVANIA COUNTY, VIRGINIA, APPROXIMATELY 14 MILES (22.5 KM) SOUTHWEST FROM THE CITY OF FREDERICKSBURG.

TO REACH THE STATION FROM THE INTERSECTION OF STATE ROUTE 3 (PLANK ROAD) AND STATE ROUTE 621 (ORANGE PLANK ROAD), PROCEED WESTERLY ALONG STATE ROUTE 621 (ORANGE PLANK ROAD) A DISTANCE OF 2.1 MILES (3.4 KM) TO ITS INTERSECTION WITH STATE ROUTE 613 (BROCK ROAD). CONTINUE WESTERLY ALONG STATE ROUTE 621 (ORANGE PLANK ROAD) A DISTANCE OF 3.0 MILES (4.8 KM) TO THE STATION ON THE LEFT ACROSS THE ROAD FROM MILLER FARMS INC. DAIRY FARM.

THE STATION IS A 3 1/2 INCH SPOTSYLVANIA COUNTY, VIRGINIA ALUMINUM SURVEY DISK, SET IN A POURED IN PLACE CONCRETE MONUMENT, 10 INCHES IN DIAMETER, FLUSH WITH THE GROUND SURFACE AND STAMPED GRACE AZ 2002.

STATION GRACE AZ IS INTERVISIBLE WITH STATION GRACE.

SKETCH:



DRAWN BY: BCL

CHECKED BY: DAR

DATE: 02/2003

APPROX. SCALE: 1" = 30'

**GeoMETRICS**  
690.100.