

SPOTSYLVANIA COUNTY, VIRGINIA  
 E911 GPS SURVEY REVISED 10/2008

W.O. 95007

MAP PROJECTION: LAMBERT ORDER OF SURVEY: FIRST  
 NAD 83(2007) \* VIRGINIA STATE PLANE COORDINATE SYSTEM \* NORTH ZONE

COUNTY	NAME OF STATION	YEAR
SPOTSYLVANIA	GOOD	1995

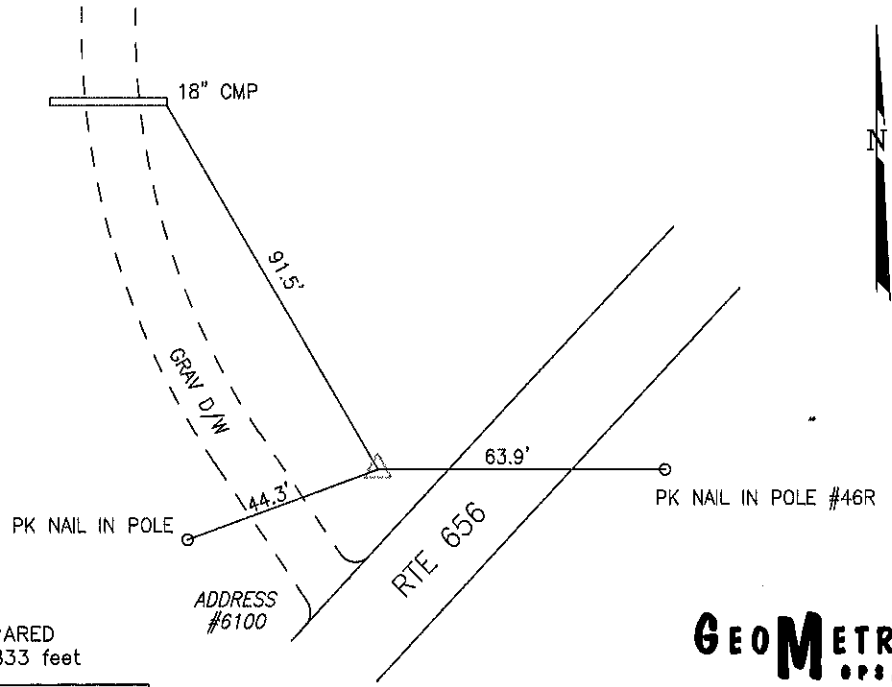
N: 6730269.23	E: 11718582.20	LAT.: 38° 07' 36.34566"N	LONG.: 77° 40' 50.68614"W
GRID FACTOR: 0.99998482	SEA LEVEL FACTOR: 0.99999155	Ø ANGLE: +0° 30' 40.72"	

ESTABLISHED BY: GeoMetrics GPS, INC.	YEAR 1995	DISTANCES AND DIRECTIONS TO REFERENCE MARKS AND PROMINENT OBJECTS OBSERVED AT STATION	
		OBJECT	DISTANCE--FT.
VERTICAL DATUM NAVD 88			
ELEVATION (FT.) 282.44			
RECOVERED: NOV 2000			

DESCRIPTION OF STATION:

The station is a Spotsylvania County survey disk set in concrete stamped GOOD 1995 located in Spotsylvania County, Virginia, approximately 2.5 miles southwest of Post Oak. To reach the station from the intersection of Route 208 (Courthouse Road), Route 606 (Morris Road) and Route 738 (Partlow Road) at Snell, proceed west along Route 208/606 (Courthouse Road) 2.9 miles to its intersection with Route 656 (Towles Mill Road). Turn left and proceed south along Route 656 (Towles Mill Road) to the station on the right. Witness post set N85°W at 0.8 feet.

SKETCH OF STATION:



THIS SURVEY DATA PREPARED  
 USING 1 meter = 3.280833 feet

PREPARED BY: EJP	DATE: AUG '95
CHECKED BY: DAR	DATE: AUG '95

NOTE:  
 IN 2008 THE COORDINATES WERE CONVERTED TO  
 NAD83(2007) BY APPLYING A COMPUTED SHIFT

**GEOMETRICS**  
 GPS, INC.

236 CAMBRIDGE ROAD  
 FREDERICKSBURG, VIRGINIA  
 (540) 372-3499