

**SPOTSYLVANIA COUNTY VIRGINIA
2002 CONTROL SURVEY**

JN 102-040

HORIZONTAL DATUM: NAD 83(2007) (REVISED 8-08)
 VERTICAL DATUM: NAVD 88
 COORDINATE SYSTEM: VIRGINIA STATE PLANE, NORTH ZONE
 UNITS: U.S. SURVEY FOOT

HORIZONTAL ORDER: FIRST
 VERTICAL ORDER: THIRD

| COUNTY | NAME OF STATION | YEAR |
|---|---------------------------|-----------------------------|
| SPOTSYLVANIA | GLOVER AZ | 2002 |
| N: 6779181.64 | LAT: 38° 15' 37.27944" N | COMBINED FACTOR: 0.99995641 |
| E: 11746139.36 | LONG: 77° 34' 59.72220" W | ⊖ ANGLE: 0° 34' 19.8" |
| ELEVATION: 342.75 (ESTABLISHED BY GPS) | | |
| DISTANCES AND DIRECTIONS TO AZIMUTH MARKS | | |
| STATION | GROUND DISTANCE | TRUE AZIMUTH |
| GLOVER | 1650.56' | 9°28'58" |

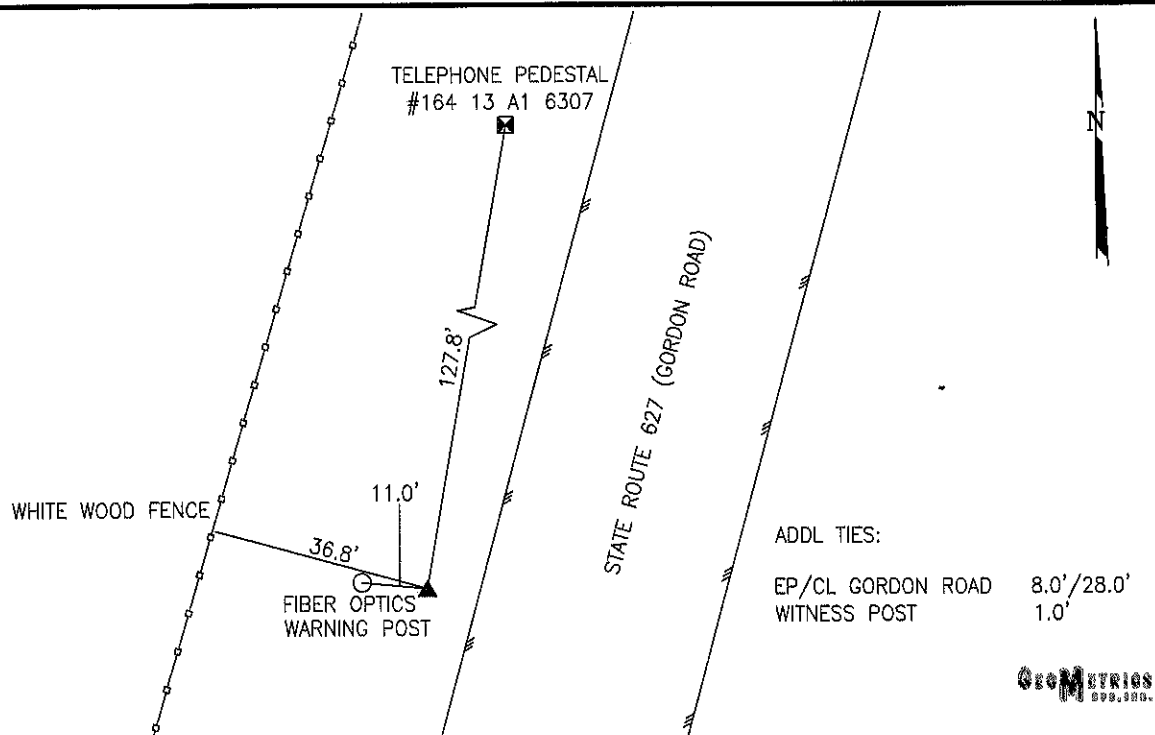
THE STATION IS LOCATED IN SPOTSYLVANIA COUNTY, VIRGINIA APPROXIMATELY 7.0 MILES WEST SOUTHWEST FROM THE CITY OF FREDERICKSBURG.

TO REACH THE STATION FROM THE INTERSECTION OF US INTERSTATE 95 AND STATE ROUTE 3 (PLANK ROAD) PROCEED WEST ALONG STATE ROUTE 3 (PLANK ROAD) A DISTANCE OF 2.7 MILES TO ITS INTERSECTION WITH STATE ROUTE 610 (OLD PLANK ROAD). TURN LEFT AND PROCEED SOUTHWEST ALONG STATE ROUTE 610 (OLD PLANK ROAD) A DISTANCE OF APPROXIMATELY 0.5 MILE TO ITS INTERSECTION WITH STATE ROUTE 627 (GORDON ROAD). TURN LEFT AND PROCEED SOUTHWEST ALONG STATE ROUTE 627 (GORDON ROAD) A DISTANCE OF APPROXIMATELY 2.5 MILES TO THE STATION OF THE RIGHT.

THE STATION IS A 3 1/2 INCH SPOTSYLVANIA COUNTY, VA ALUMINUM SURVEY DISK SET IN A Poured IN PLACE CONCRETE MONUMENT FLUSH WITH THE GROUND SURFACE AND STAMPED GLOVER AZ 2002.

THIS STATION IS INTERVISIBLE WITH STATION GLOVER 2002.

SKETCH:



DRAWN BY: KNT

CHECKED BY: CEN

DATE: 07/2002

APPROX. SCALE: 1" = 30'