

**SPOTSYLVANIA COUNTY VIRGINIA  
2002 CONTROL SURVEY**

JN 102-040

HORIZONTAL DATUM: NAD 83(2007) (REVISED 8-08)  
 VERTICAL DATUM: NAVD 88  
 COORDINATE SYSTEM: VIRGINIA STATE PLANE, NORTH ZONE  
 UNITS: U.S. SURVEY FOOT

HORIZONTAL ORDER: FIRST  
 VERTICAL ORDER: THIRD

COUNTY	NAME OF STATION	YEAR
SPOTSYLVANIA	GLOVER	2002
N: 6780812.22	LAT: 38° 15' 53.37272" N	COMBINED FACTOR: 0.99995594
E: 11746395.01	LONG: 77° 34' 56.31271" W	⊖ ANGLE: 0° 34' 21.9"
ELEVATION: 342.45 (ESTABLISHED BY GPS)		

DISTANCES AND DIRECTIONS TO AZIMUTH MARKS		
STATION	GROUND DISTANCE	TRUE AZIMUTH
GLOVER AZ	1650.56'	189°29'00"

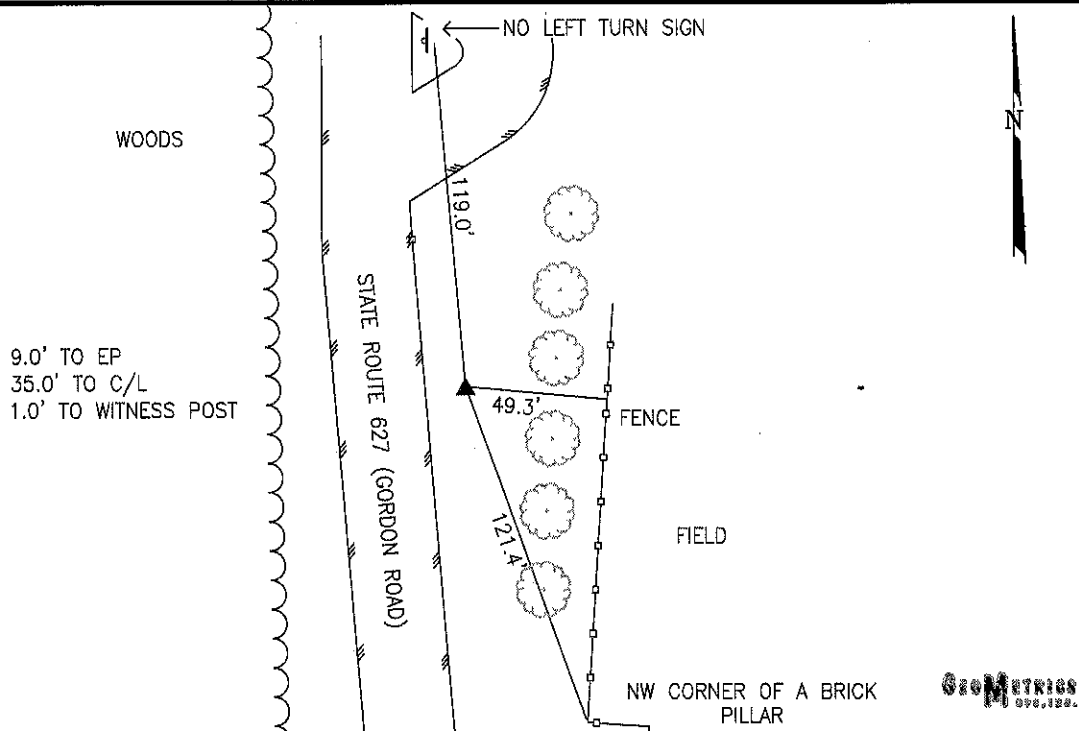
THE STATION IS LOCATED IN SPOTSYLVANIA COUNTY, VIRGINIA APPROXIMATELY 7.0 MILES WEST SOUTHWEST FROM THE CITY OF FREDERICKSBURG.

TO REACH THE STATION FROM THE INTERSECTION OF US INTERSTATE 95 AND STATE ROUTE 3 (PLANK ROAD) PROCEED WEST ALONG STATE ROUTE 3 (PLANK ROAD) A DISTANCE OF 2.7 MILES TO ITS INTERSECTION WITH STATE ROUTE 610 (OLD PLANK ROAD). TURN LEFT AND PROCEED SOUTHWEST ALONG STATE ROUTE 610 (OLD PLANK ROAD) A DISTANCE OF APPROXIMATELY 0.5 MILE TO ITS INTERSECTION WITH STATE ROUTE 627 (GORDON ROAD). TURN LEFT AND PROCEED SOUTHWEST ALONG STATE ROUTE 627 (GORDON ROAD) A DISTANCE OF APPROXIMATELY 2.0 MILES TO THE STATION OF THE LEFT.

THE STATION IS A 3 1/2 INCH SPOTSYLVANIA COUNTY, VA ALUMINUM SURVEY DISK SET IN A Poured IN PLACE CONCRETE MONUMENT FLUSH WITH THE GROUND SURFACE AND STAMPED GLOVER 2002.

THE STATION IS INTERVISIBLE WITH STATION GLOVER AZ 2002.

SKETCH:



DRAWN BY: KNT

CHECKED BY: CEN

DATE: 08/2002

APPROX. SCALE: 1" = 30'

