

**SPOTSYLVANIA COUNTY VIRGINIA  
2005 CONTROL SURVEY**

JN 104--085

HORIZONTAL DATUM: NAD 83(2007) (REVISED 8--08)  
 VERTICAL DATUM: NAVD 88  
 COORDINATE SYSTEM: VIRGINIA STATE PLANE, NORTH ZONE  
 UNITS: U.S. SURVEY FOOT

HORIZONTAL ORDER: FIRST  
 VERTICAL ORDER: THIRD

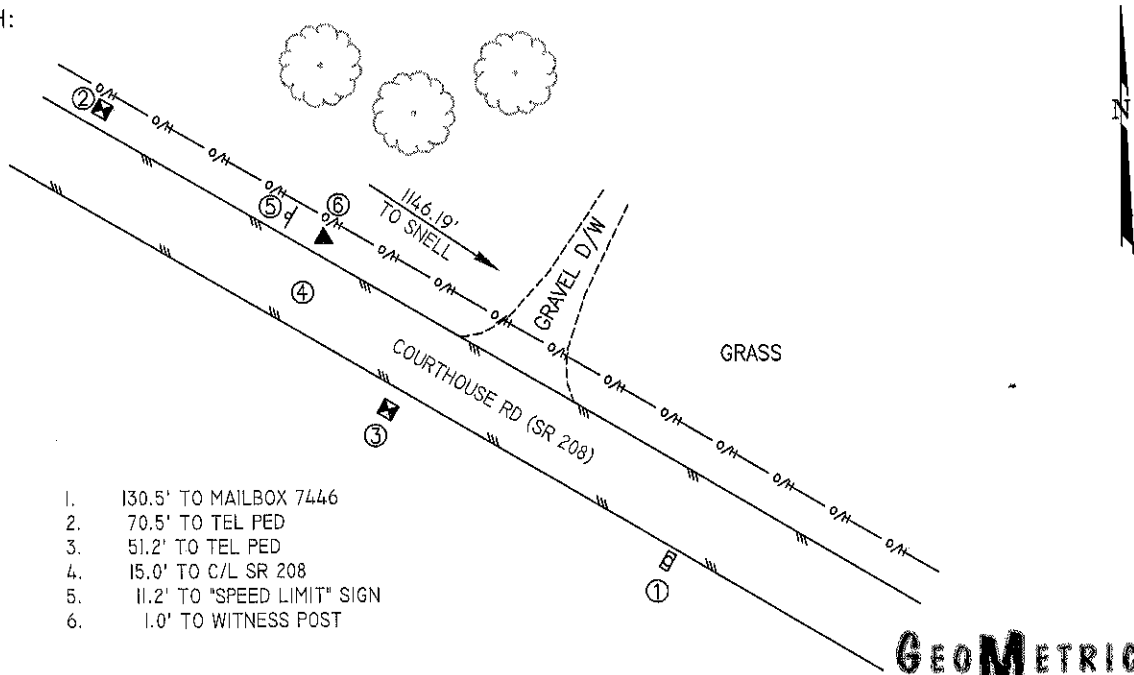
COUNTY	NAME OF STATION	YEAR
SPOTSYLVANIA	FOX RIDGE	2005
N: 6738552.99	LAT: 38° 08' 56.19934" N	COMBINED FACTOR: 0.99998161
E: 11740598.69	LONG: 077° 36' 14.15847" W	∠ ANGLE: 0° 33' 33"
ELEVATION: 279.06' (ESTABLISHED BY GPS)		
DISTANCES AND DIRECTIONS TO AZIMUTH MARKS		
STATION	GROUND DISTANCE	TRUE AZIMUTH
SNELL	1146.19	118°20'52"

THE STATION IS LOCATED IN SPOTSYLVANIA COUNTY, VIRGINIA, APPROXIMATELY 7.4 KM (4.6 MILES) WEST OF THORNBURG AND 6.1 KM (3.8 MILES) SOUTH OF THE SPOTSYLVANIA COUNTY COURTHOUSE, IN THE VILLAGE OF SNELL.

TO REACH THE STATION FROM THE INTERSECTION OF US HIGHWAY 1 (JEFFERSON DAVIS HIGHWAY) AND SR 606 (MORRIS ROAD) AT THORNBURG, GO WEST ON SR 606 FOR 7.2 KM (4.5 MILES) TO ITS INTERSECTION WITH SR 208 (COURTHOUSE ROAD) AND SR 738 (PARTLOW ROAD). CONTINUE WEST ON SR 208 FOR 0.3 KM (0.2 MILE) TO THE STATION ON THE RIGHT.

THE STATION IS A SPOTSYLVANIA COUNTY, VA ALUMINUM SURVEY DISK SET INTO A Poured IN PLACE CONCRETE MONUMENT 10 INCHES IN DIAMETER, FLUSH WITH THE GROUND SURFACE AND STAMPED FOX RIDGE 2005. STATION FOX RIDGE IS INTER-VISIBLE WITH STATION SNELL.

SKETCH:



1. 130.5' TO MAILBOX 7446
2. 70.5' TO TEL PED
3. 51.2' TO TEL PED
4. 15.0' TO C/L SR 208
5. 11.2' TO "SPEED LIMIT" SIGN
6. 1.0' TO WITNESS POST

**GEOMETRICS**  
GPS, INC.

DRAWN BY: BCL

CHECKED BY: DAR

DATE: 06/2005

APPROX. SCALE: 1" = 50'