

**SPOTSYLVANIA COUNTY VIRGINIA  
2006 CONTROL SURVEY (RE-ADJUSTED 2008)**

JN 105-138

HORIZONTAL DATUM: NAD 83(2007)  
VERTICAL DATUM: NAVD 88  
COORDINATE SYSTEM: VIRGINIA STATE PLANE, NORTH ZONE  
UNITS: U.S. SURVEY FOOT

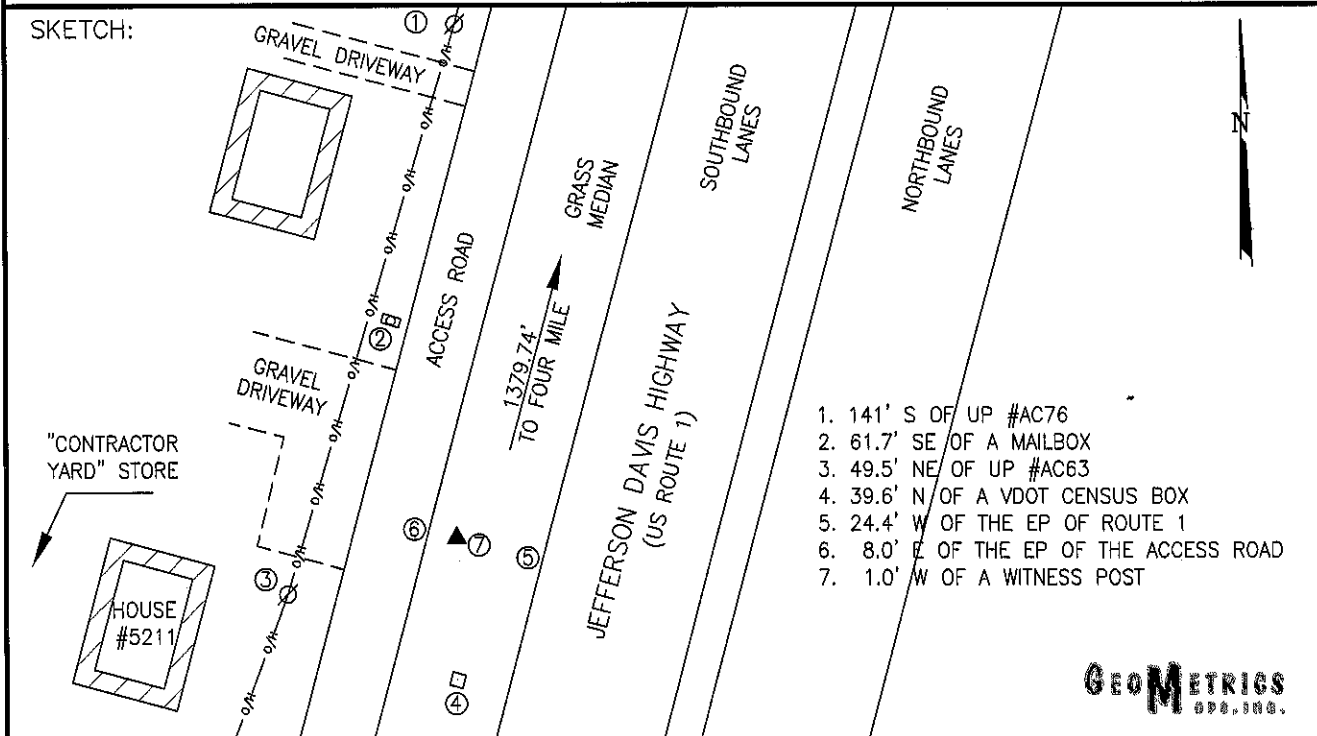
HORIZONTAL ORDER: FIRST  
VERTICAL ORDER: THIRD

COUNTY	NAME OF STATION	YEAR
SPOTSYLVANIA	FOUR MILE AZ	2006
N: 6776744.05	LAT: 38° 15' 10.66001" N	COMBINED FACTOR: 0.99996850
E: 11770572.15	LONG: 077° 29' 53.74137" W	∠ ANGLE: 0° 37' 30.7"
ELEVATION: 256.66' (ESTABLISHED BY GPS)		
DISTANCES AND DIRECTIONS TO AZIMUTH MARKS		
STATION	GROUND DISTANCE	TRUE AZIMUTH
FOUR MILE	1379.74'	7°56'30"

THE STATION IS LOCATED ABOUT 10.0 KM (6.2 MILES) NORTHEAST OF SPOTSYLVANIA, AND 5.5 KM (3.4 MILES) SOUTHWEST OF FREDERICKSBURG.

TO REACH THE STATION FROM THE INTERSECTION OF INTERSTATE 95 AND US HIGHWAY 1 (JEFFERSON DAVIS HIGHWAY) (AT EXIT 126), GO NORTH ON US HIGHWAY 1 FOR 1.4 KM (0.9 MILE) TO THE STATION ON THE LEFT ACROSS FROM THE BILL BRITT MAZDA DEALERSHIP, NORTH OF THE CONTRACTOR YARD LOT.

THE STATION IS A STANDARD SPOTSYLVANIA COUNTY, VA ALUMINUM SURVEY DISK SET INTO A Poured IN PLACE CONCRETE MONUMENT 10 INCHES IN DIAMETER, FLUSH WITH THE GROUND SURFACE AND STAMPED FOUR MILE AZ 2006.



**GEOMETRICS**  
INC.