

**SPOTSYLVANIA COUNTY VIRGINIA
2006 CONTROL SURVEY (RE-ADJUSTED 2008)**

JN 105-138

HORIZONTAL DATUM: NAD 83(2007)
VERTICAL DATUM: NAVD 88
COORDINATE SYSTEM: VIRGINIA STATE PLANE, NORTH ZONE
UNITS: U.S. SURVEY FOOT

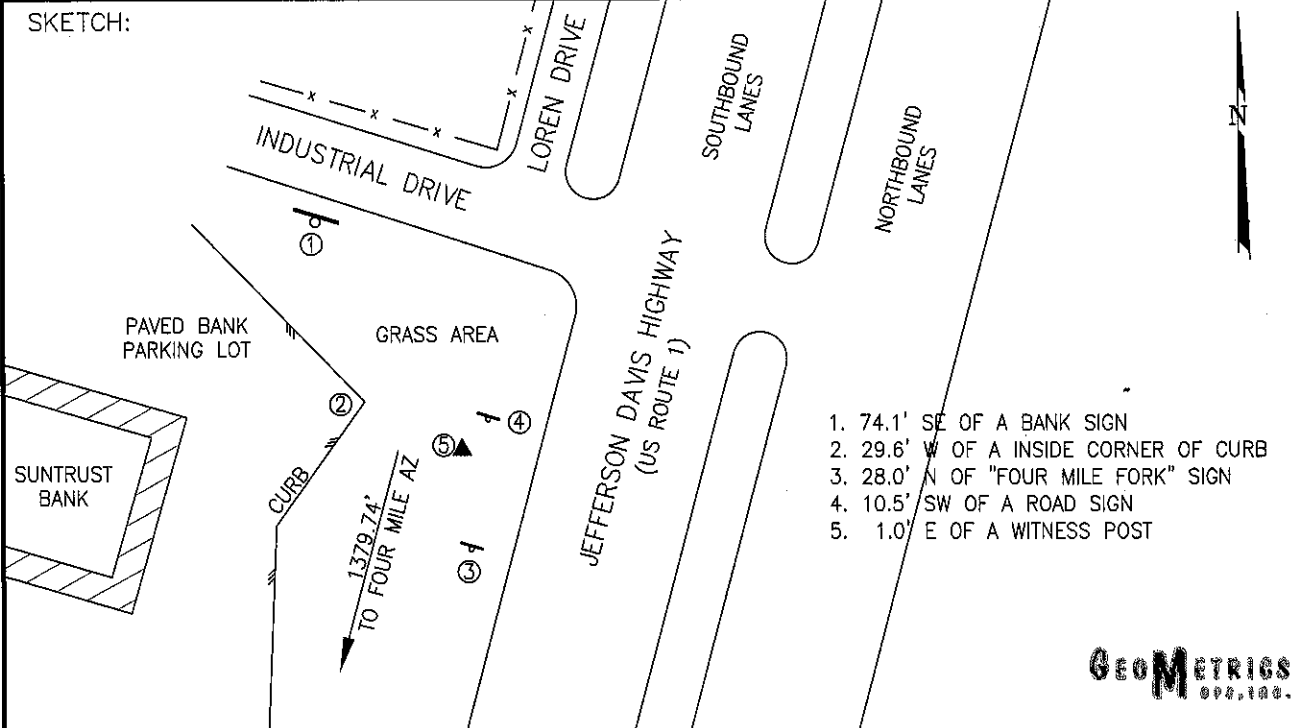
HORIZONTAL ORDER: FIRST
VERTICAL ORDER: THIRD

COUNTY	NAME OF STATION	YEAR
SPOTSYLVANIA	FOUR MILE	2006
N: 6778112.50	LAT: 38° 15' 24.16818" N	COMBINED FACTOR: 0.99996809
E: 11770747.86	LONG: 077° 29' 51.35145" W	⊖ ANGLE: 0° 37' 32.2"
ELEVATION: 249.12' (ESTABLISHED BY GPS)		
DISTANCES AND DIRECTIONS TO AZIMUTH MARKS		
STATION	GROUND DISTANCE	TRUE AZIMUTH
FOUR MILE AZ	1379.74'	187°56'32"

THE STATION IS LOCATED ABOUT 10.0 KM (6.2 MILES) NORTHEAST OF SPOTSYLVANIA, AND 5.5 KM (3.4 MILES) SOUTHWEST OF FREDERICKSBURG.

TO REACH THE STATION FROM THE INTERSECTION OF INTERSTATE 95 AND US HIGHWAY 1 (JEFFERSON DAVIS HIGHWAY) (AT EXIT 126), GO NORTH ON US HIGHWAY 1 FOR 1.8 KM (1.1 MILES) TO THE STATION ON THE LEFT IN FRONT OF THE SUNTRUST BANK, BETWEEN THE PARKING LOT AND SOUTHBOUND US HIGHWAY 1.

THE STATION IS A STANDARD SPOTSYLVANIA COUNTY, VA ALUMINUM SURVEY DISK SET INTO A POURED IN PLACE CONCRETE MONUMENT 10 INCHES IN DIAMETER, FLUSH WITH THE GROUND SURFACE AND STAMPED FOUR MILE 2006.



DRAWN BY: BCL

CHECKED BY: DAR

DATE: 06/2006

APPROX. SCALE: 1" = 50'