

**SPOTSYLVANIA COUNTY VIRGINIA
2003-2004 CONTROL SURVEY**

JN 103-060

HORIZONTAL DATUM: NAD 83(2007) (REVISED 8-08)
 VERTICAL DATUM: NAVD 88
 COORDINATE SYSTEM: VIRGINIA STATE PLANE, NORTH ZONE
 UNITS: U.S. SURVEY FOOT

HORIZONTAL ORDER: FIRST
 VERTICAL ORDER: THIRD

COUNTY	NAME OF STATION	YEAR
SPOTSYLVANIA	FLIPPO AZ	2003
N: 6747181.14	LAT: 38° 10' 17.35226" N	COMBINED FACTOR: 0.99997849
E: 11780397.06	LONG: 77° 27' 54.75685" W	⊖ ANGLE: 0° 38' 45"
ELEVATION: 237.40'	(ESTABLISHED BY GPS)	
DISTANCES AND DIRECTIONS TO AZIMUTH MARKS		
STATION	GROUND DISTANCE	TRUE AZIMUTH
FLIPPO	985.79'	346° 57' 00"

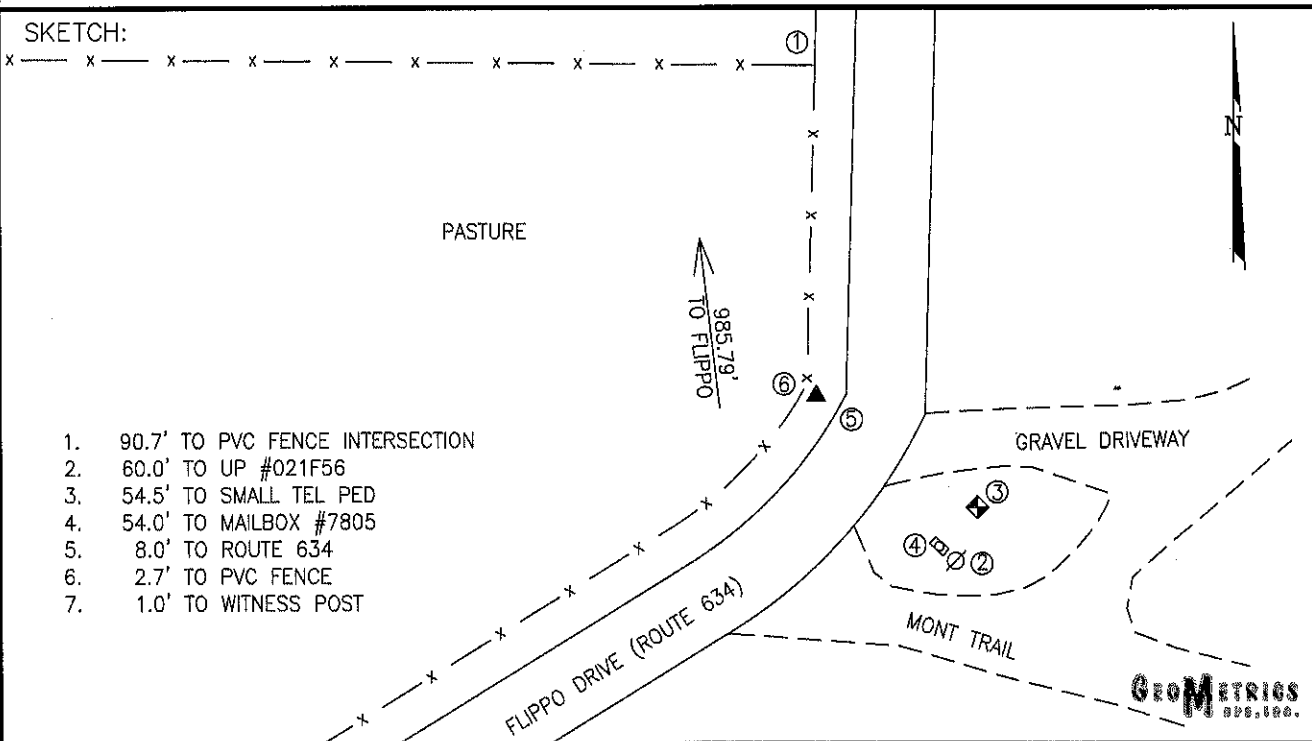
THE STATION IS LOCATED IN SPOTSYLVANIA COUNTY, VIRGINIA, APPROXIMATELY 14.3 KM (8.9 FEET) SOUTH OF THE CITY OF FREDERICKSBURG AND 11.3 KM (7.0 MILES) SOUTHEAST OF THE SPOTSYLVANIA COURTHOUSE.

TO REACH THE STATION FROM THE INTERSECTION OF US HIGHWAY 1 (JEFFERSON DAVIS HIGHWAY) AND STATE ROUTE 608 (MASSAPONAX CHURCH ROAD) GO SOUTHWESTERLY ON STATE ROUTE 608 FOR 4.0 KM (2.5 MILES) TO ITS INTERSECTION WITH STATE ROUTE 634 (FLIPPO DRIVE). TURN LEFT AND GO SOUTHEASTERLY ON STATE ROUTE 634 FOR 3.2 KM (2.0 MILES) TO THE STATION ON THE LEFT.

STATION FLIPPO AZ IS INTERVISIBLE WITH STATION FLIPPO.

THE STATION IS A 3 1/2 INCH SPOTSYLVANIA COUNTY, VA ALUMINUM SURVEY DISK SET INTO A POURED IN PLACE CONCRETE MONUMENT 10 INCHES IN DIAMETER, RECESSED ONE INCH BELOW THE GROUND SURFACE AND STAMPED FLIPPO AZ 2003.

SKETCH:



1. 90.7' TO PVC FENCE INTERSECTION
2. 60.0' TO UP #021F56
3. 54.5' TO SMALL TEL PED
4. 54.0' TO MAILBOX #7805
5. 8.0' TO ROUTE 634
6. 2.7' TO PVC FENCE
7. 1.0' TO WITNESS POST

DRAWN BY: BCL

CHECKED BY: LLR

DATE: 04/2004

APPROX. SCALE: 1" = 50'