

**SPOTSYLVANIA COUNTY VIRGINIA
2003-2004 CONTROL SURVEY**

JN 103-060

HORIZONTAL DATUM: NAD 83(2007) (REVISED 8-08)
 VERTICAL DATUM: NAVD 88
 COORDINATE SYSTEM: VIRGINIA STATE PLANE, NORTH ZONE
 UNITS: U.S. SURVEY FOOT

HORIZONTAL ORDER: FIRST
 VERTICAL ORDER: THIRD

COUNTY	NAME OF STATION	YEAR
SPOTSYLVANIA	FLIPPO	2003
N: 6748138.87	LAT: 38° 10' 26.84549" N	COMBINED FACTOR: 0.99997814
E: 11780163.67	LONG: 77° 27' 57.54428" W	⊖ ANGLE: 0° 38' 43"
ELEVATION: 231.76' (ESTABLISHED BY GPS)		
DISTANCES AND DIRECTIONS TO AZIMUTH MARKS		
STATION	GROUND DISTANCE	TRUE AZIMUTH
FLIPPO AZ	985.79'	166° 56' 59"

THE STATION IS LOCATED IN SPOTSYLVANIA COUNTY, VIRGINIA, APPROXIMATELY 14.5 KM (9.0 MILES) SOUTH OF THE CITY OF FREDERICKSBURG AND 11.3 KM (7.0 MILES) SOUTHEAST OF THE SPOTSYLVANIA COURTHOUSE.

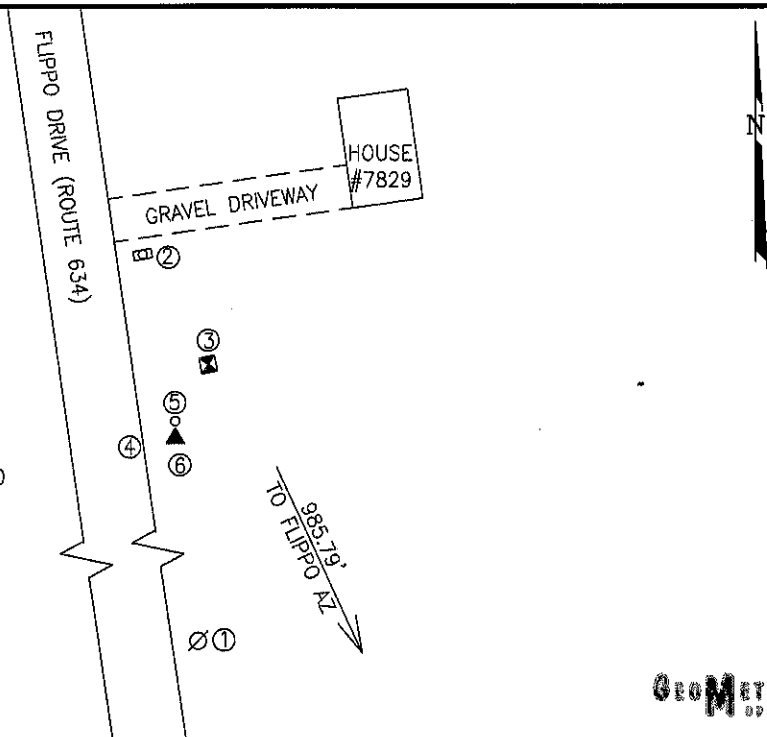
TO REACH THE STATION FROM THE INTERSECTION OF US HIGHWAY 1 (JEFFERSON DAVIS HIGHWAY) AND STATE ROUTE 608 (MASSAPONAX CHURCH ROAD) GO SOUTHWESTERLY ON STATE ROUTE 608 FOR 4.0 KM (2.5 MILES) TO ITS INTERSECTION WITH STATE ROUTE 634 (FLIPPO DRIVE). TURN LEFT AND GO SOUTHEASTERLY ON STATE ROUTE 634 FOR 2.7 KM (1.7 MILES) TO THE STATION ON THE LEFT.

STATION FLIPPO IS INTERVISIBLE WITH STATION FLIPPO AZ.

THE STATION IS A 3 1/2 INCH SPOTSYLVANIA COUNTY, VA ALUMINUM SURVEY DISK SET INTO A Poured IN PLACE CONCRETE MONUMENT 10 INCHES IN DIAMETER, RECESSED TWO INCHES BELOW THE GROUND SURFACE AND STAMPED FLIPPO 2003.

SKETCH:

1. 266.4' TO UP #411 63 405 500
2. 50.7' TO MAILBOX #7829
3. 21.6' TO TEL PED
4. 9.0' TO EP ROUTE 634
5. 4.0' TO WOOD FENCE POST
6. 1.0' TO WITNESS POST



GEOMETRICS
S.P.O. INC.

DRAWN BY: BCL	CHECKED BY: LLR	DATE: 04/2004	APPROX. SCALE: 1" = 50'
---------------	-----------------	---------------	-------------------------