

SPOTSYLVANIA COUNTY VIRGINIA
2006-2007 CONTROL SURVEY (RE-ADJUSTED 2008)

JN 106-134

HORIZONTAL DATUM: NAD 83(2007)
 VERTICAL DATUM: NAVD 88
 COORDINATE SYSTEM: VIRGINIA STATE PLANE, NORTH ZONE
 UNITS: U.S. SURVEY FOOT

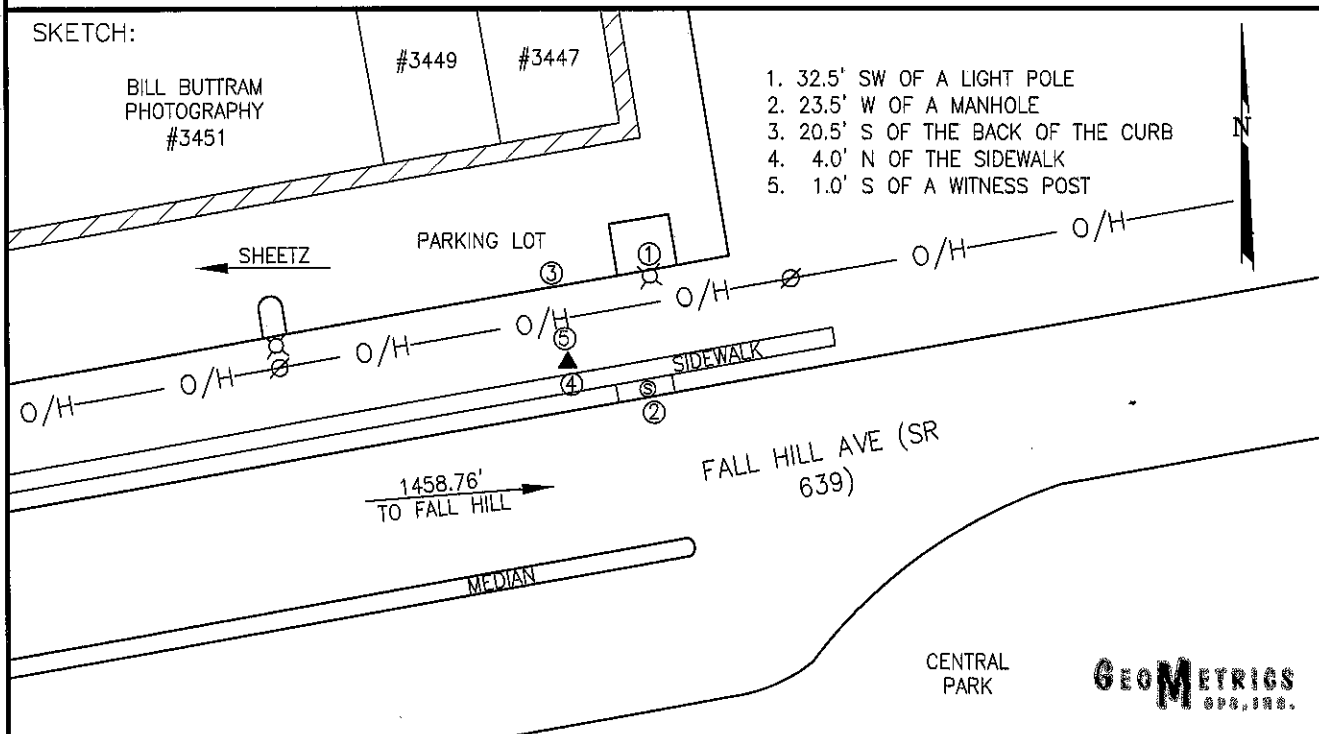
HORIZONTAL ORDER: FIRST
 VERTICAL ORDER: THIRD

| COUNTY | NAME OF STATION | YEAR |
|---|----------------------------|-----------------------------|
| CITY OF FREDERICKSBURG | FALL HILL AZ | 2006 |
| N: 6797643.26 | LAT: 38° 18' 37.68658" N | COMBINED FACTOR: 0.99995548 |
| E: 11766489.81 | LONG: 077° 30' 42.09608" W | ∅ ANGLE: 0° 37' 01" |
| ELEVATION: 254.82' (ESTABLISHED BY GPS) | | |
| DISTANCES AND DIRECTIONS TO AZIMUTH MARKS | | |
| STATION | GROUND DISTANCE | TRUE AZIMUTH |
| FALL HILL | 1458.76' | 64°55'59" |

THE STATION IS LOCATED ABOUT 8.4 KM (5.2 MILES) NORTHEAST OF CHANCELLOR, AND 4.2 KM (2.6 MILES) NORTHWEST OF FREDERICKSBURG.

TO REACH THE STATION FROM THE INTERSECTION OF US HIGHWAY 1 (JEFFERSON DAVIS HIGHWAY) AND US HIGHWAY 17 (WARRENTON ROAD), IN FALMOUTH, GO SOUTH ON US 1 FOR 1.2 KM (0.75 MILE) TO ITS INTERSECTION WITH SR 639 (FALL HILL AVE). TURN RIGHT AND GO WEST ON SR 639 FOR 2.7 KM (1.65 MILES) TO ITS INTERSECTION WITH I-95 BRIDGE. CONTINUE WEST ON SR 639 OVER THE BRIDGE FOR 0.8 KM (0.5 MILE) TO THE STATION ON THE RIGHT.

THE STATION IS A STANDARD SPOTSYLVANIA COUNTY, VA ALUMINUM SURVEY DISK SET INTO A POURED IN PLACE CONCRETE MONUMENT 10 INCHES IN DIAMETER, FLUSH WITH GROUND SURFACE AND STAMPED FALL HILL AZ 2006.



DRAWN BY: BCL

CHECKED BY: DAR

DATE: 01/2007

APPROX. SCALE: 1" = 50'