

**SPOTSYLVANIA COUNTY VIRGINIA
2002 CONTROL SURVEY**

JN 102-040

HORIZONTAL DATUM: NAD 83(2007) (REVISED 8-08)
 VERTICAL DATUM: NAVD 88
 COORDINATE SYSTEM: VIRGINIA STATE PLANE, NORTH ZONE
 UNITS: U.S. SURVEY FOOT

HORIZONTAL ORDER: FIRST
 VERTICAL ORDER: THIRD

COUNTY	NAME OF STATION	YEAR
SPOTSYLVANIA	F 463	2002
N: 6769646.73	LAT: 38° 13' 57.47439" N	COMBINED FACTOR: 0.99997271
E: 11797402.70	LONG: 77° 24' 18.46581" W	⊖ ANGLE: 0° 41' 00.0"
ELEVATION: 66.77 (ESTABLISHED BY GPS)		

DISTANCES AND DIRECTIONS TO AZIMUTH MARKS		
STATION	GROUND DISTANCE	TRUE AZIMUTH
POST	1801.65'	58°05'44"

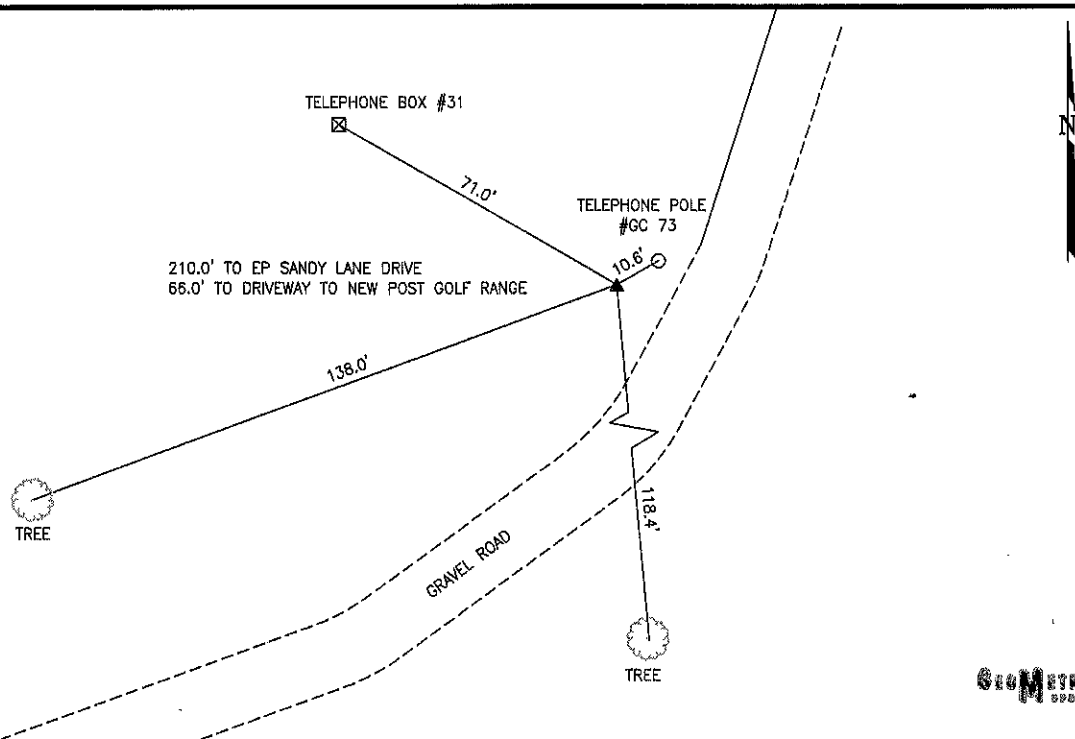
THE STATION IS LOCATED ABOUT 5.8 MILES SOUTHEAST FROM THE CITY OF FREDERICKSBURG.

TO REACH THE STATION FROM THE CORBIN POST OFFICE, ZIP CODE 22446, LOCATED ON STATE ROUTE 2 JUST NORTH OF THE INTERSECTION OF STATE ROUTE 610 IN THE NORTHERN PART OF CAROLINE COUNTY, GO NORTHERLY ON STATE ROUTE 2 FOR 2.55 MILES TO ITS INTERSECTION WITH U.S. HIGHWAY 17 AT NEW POST. TURN RIGHT AND PROCEED EAST ON U.S. HIGHWAY 17 SOUTH FOR 0.1 MILE TO A CUT THROUGH IN THE MEDIAN ON THE LEFT. TURN LEFT THROUGH THE CUT THROUGH CROSSING ON THE WESTBOUND LANE OF U.S. HIGHWAY 17. GO NORTH FOR 100 FEET TO THE END OF THE BLACKTOP. TURN LEFT AND GO WEST ON A DIM GRAVEL AND GRASS ROAD FOR 100 FEET TO THE MARK ON THE RIGHT.

THE MARK IS A CGS BENCHMARK DISK CLAMPED ON A ROD INSIDE A 6 INCH TILE PIPE PROJECTING 1 INCH ABOVE GROUND STAMPED F 463 1971.

THE STATION IS INTERVISIBLE WITH STATION POST.

SKETCH:



GEOMETRIS
SPE, INC.

DRAWN BY: KNT

CHECKED BY: CEN

DATE: 07/2002

APPROX. SCALE: 1" = 50'