

SPOTSYLVANIA COUNTY, VIRGINIA  
 E911 GPS SURVEY REVISED 10/2008

W.O. 95007

MAP PROJECTION: LAMBERT ORDER OF SURVEY: FIRST  
 NAD 83(2007) \* VIRGINIA STATE PLANE COORDINATE SYSTEM \* NORTH ZONE

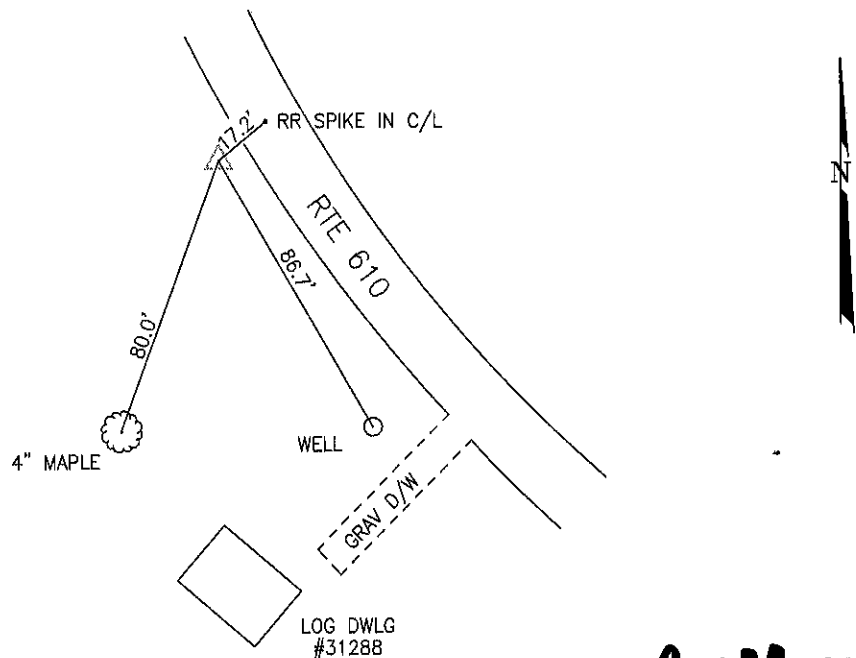
COUNTY	NAME OF STATION	YEAR
CULPEPER	ELYS FORD	1995

N: 6818693.86	E: 11714872.50	LAT.: 38° 22' 10.76881"N	LONG.: 77° 41' 27.35750"W
GRID FACTOR: 0.99995769	SEA LEVEL FACTOR: 0.99999091	ϕ ANGLE: +0° 30' 17.83"	

ESTABLISHED BY: GeoMetrics GPS, INC.	YEAR 1995	DISTANCES AND DIRECTIONS TO REFERENCE MARKS AND PROMINENT OBJECTS OBSERVED AT STATION	
		OBJECT	MAG. AZIMUTH
VERTICAL DATUM NAVD 88			
ELEVATION (FT.) 295.80			
RECOVERED: OCT 2000			

DESCRIPTION OF STATION:  
 The station is a Spotsylvania County survey disk set in concrete stamped ELYS FORD 1995 located in Culpeper County, Virginia, approximately 5.0 miles northwest of Chancellorsville. To reach the station from the intersection of Route 3 (Plank Road) and Route 610 (Elys Ford Road) proceed north along Route 610 (Elys Ford Road) 4.9 miles to its intersection with the Rapidan River Bridge. Continue north along Route 610 (Elys Ford Road) 0.8 miles to the station on the left. Witness post set S50°W at 1.3 feet. Witness post has been cut in half at request of property.

SKETCH OF STATION:



THIS SURVEY DATA PREPARED  
 USING 1 meter = 3.280833 feet

PREPARED BY: EJP	DATE: AUG '95
CHECKED BY: DAR	DATE: AUG '95

NOTE:  
 IN 2008 THE COORDINATES WERE CONVERTED TO  
 NAD83(2007) BY APPLYING A COMPUTED SHIFT

**GEOMETRICS**  
 OPS, INC.

236 CAMBRIDGE ROAD  
 FREDERICKSBURG, VIRGINIA  
 (540) 372-3499