

**SPOTSYLVANIA COUNTY VIRGINIA
2003-2004 CONTROL SURVEY**

JN 103-060

HORIZONTAL DATUM: NAD 83(2007) (REVISED 8-08)
 VERTICAL DATUM: NAVD 88
 COORDINATE SYSTEM: VIRGINIA STATE PLANE, NORTH ZONE
 UNITS: U.S. SURVEY FOOT

HORIZONTAL ORDER: FIRST
 VERTICAL ORDER: THIRD

COUNTY	NAME OF STATION	YEAR
SPOTSYLVANIA	DEW	2004
N: 6723606.30	LAT: 38° 06' 26.28103" N	COMBINED FACTOR: 0.99998777
E: 11762168.93	LONG: 77° 31' 46.12468" W	⊖ ANGLE: 0° 36' 21"
ELEVATION: 273.25' (ESTABLISHED BY GPS)		
DISTANCES AND DIRECTIONS TO AZIMUTH MARKS		
STATION	GROUND DISTANCE	TRUE AZIMUTH
DEW AZ	1812.62'	15° 26' 04"

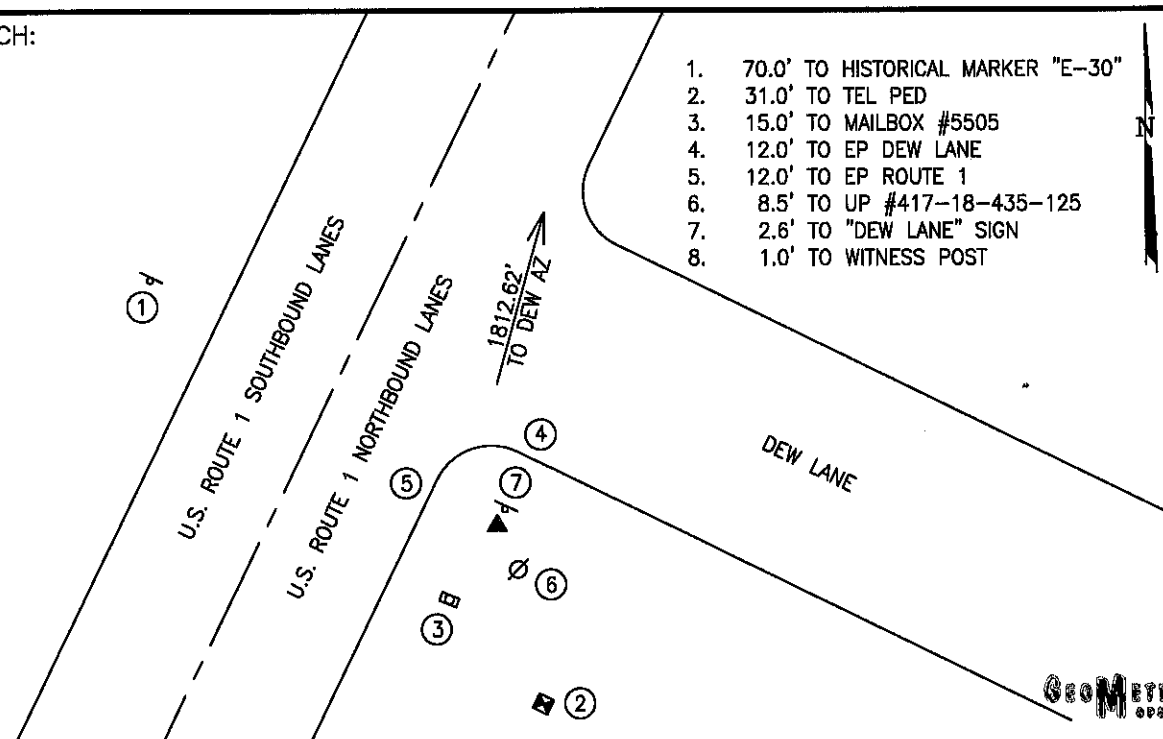
THE STATION IS LOCATED IN SPOTSYLVANIA COUNTY, VIRGINIA, APPROXIMATELY 22.5 KM (14.0 MILES) SOUTH OF THE CITY OF FREDERICKSBURG AND 11.6 KM (7.2 MILES) SOUTHEAST OF THE SPOTSYLVANIA COURTHOUSE.

TO REACH THE STATION FROM THE INTERSECTION OF US HIGHWAY 1 (JEFFERSON DAVIS HIGHWAY) AND STATE ROUTE 603 (ARCADIA ROAD), GO NORTH ON US HIGHWAY 1 FOR 0.2 KM (0.1 MILE) TO THE STATION ON THE RIGHT.

STATION DEW IS INTERVISIBLE WITH STATION DEW AZ.

THE STATION IS A 3 1/2 INCH SPOTSYLVANIA COUNTY, VA ALUMINUM SURVEY DISK SET INTO A POURED IN PLACE CONCRETE MONUMENT 10 INCHES IN DIAMETER, FLUSH WITH THE GROUND SURFACE AND STAMPED DEW 2004.

SKETCH:



1. 70.0' TO HISTORICAL MARKER "E-30"
2. 31.0' TO TEL PED
3. 15.0' TO MAILBOX #5505
4. 12.0' TO EP DEW LANE
5. 12.0' TO EP ROUTE 1
6. 8.5' TO UP #417-18-435-125
7. 2.6' TO "DEW LANE" SIGN
8. 1.0' TO WITNESS POST

GeoMETRICS
INCORPORATED

DRAWN BY: BCL

CHECKED BY: LLR

DATE: 04/2004

APPROX. SCALE: 1" = 30'