

SPOTSYLVANIA COUNTY, VIRGINIA
 E911 GPS SURVEY REVISED 10/2008

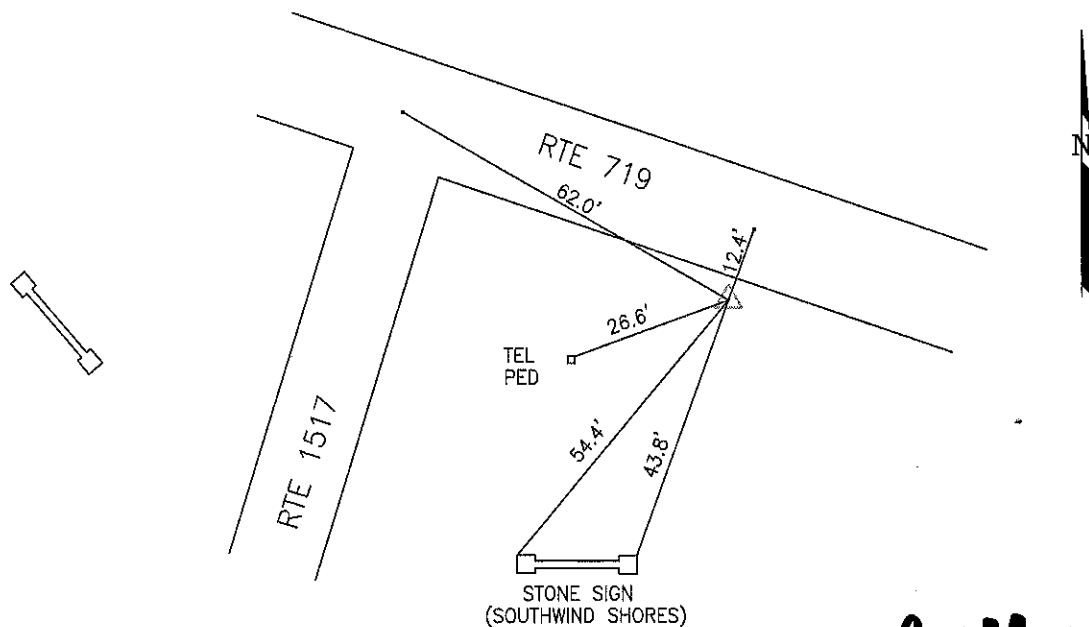
W.O. 95007

MAP PROJECTION: LAMBERT ORDER OF SURVEY: FIRST
 NAD 83(2007) * VIRGINIA STATE PLANE COORDINATE SYSTEM * NORTH ZONE

COUNTY		NAME OF STATION		YEAR
SPOTSYLVANIA		DAN		1995
N: 6738071.12	E: 11660238.08	LAT.: 38°08'57.98086"N	LONG.: 77°53'00.17156"W	
GRID FACTOR: 0.99998154	SEA LEVEL FACTOR: 0.99999029		ϕ ANGLE: +0° 23'05.43"	
ESTABLISHED BY: GeoMetrics GPS, INC.	YEAR 1995	DISTANCES AND DIRECTIONS TO REFERENCE MARKS AND PROMINENT OBJECTS OBSERVED AT STATION		
		OBJECT	DISTANCE-FT.	MAG. AZIMUTH
VERTICAL DATUM NAVD 88				
ELEVATION (FT.) 308.82				
RECOVERED: OCT 2000				

DESCRIPTION OF STATION:
 The station is a Spotsylvania County survey disk set in concrete stamped DAN 1995 located in Spotsylvania County, Virginia, approximately 6.3 miles southwest of Paytes. To reach the station from the intersection of Route 601 (Lawyers Road) and Route 612 (Stubbs Bridge Road) at Bells Crossroads proceed northwest along Route 601 (Lawyers Road) 0.9 miles to its intersection with Route 653 (Jones Powell Road). Bear left and proceed west along Route 653 (Jones Powell Road) 1.7 miles to its intersection with Route 652 (Belmont Road). Turn left and proceed south along Route 652 (Belmont Road) 1.0 mile to its intersection with Route 719 (Days Bridge Road). Turn right and proceed west along Route 719 (Days Bridge Road) 0.9 miles to the station on the left. Witness post set S70°W at 25.8 feet.

SKETCH OF STATION:



THIS SURVEY DATA PREPARED
 USING 1 meter = 3.280833 feet

PREPARED BY: EJP	DATE: AUG '95
CHECKED BY: DAR	DATE: AUG '95

NOTE:
 IN 2008 THE COORDINATES WERE CONVERTED TO
 NAD83(2007) BY APPLYING A COMPUTED SHIFT

GEOMETRICS
 GPS, INC.

236 CAMBRIDGE ROAD
 FREDERICKSBURG, VIRGINIA
 (540) 372-3499