

**SPOTSYLVANIA COUNTY VIRGINIA
2002 CONTROL SURVEY**

JN 102-040

HORIZONTAL DATUM: NAD 83(2007) (REVISED 8-08)
 VERTICAL DATUM: NAVD 88
 COORDINATE SYSTEM: VIRGINIA STATE PLANE, NORTH ZONE
 UNITS: U.S. SURVEY FOOT

HORIZONTAL ORDER: FIRST
 VERTICAL ORDER: THIRD

COUNTY	NAME OF STATION	YEAR
SPOTSYLVANIA	CVS	2002
N: 6784055.21	LAT: 38° 16' 21.70848" N	COMBINED FACTOR: 0.99996753
E: 11781687.73	LONG: 77° 27' 33.36113" W	⊖ ANGLE: 0° 38' 58.3"
ELEVATION: 82.51 (ESTABLISHED BY GPS)		
DISTANCES AND DIRECTIONS TO AZIMUTH MARKS		
STATION	GROUND DISTANCE	TRUE AZIMUTH
KAESER	1741.40'	209°16'52"

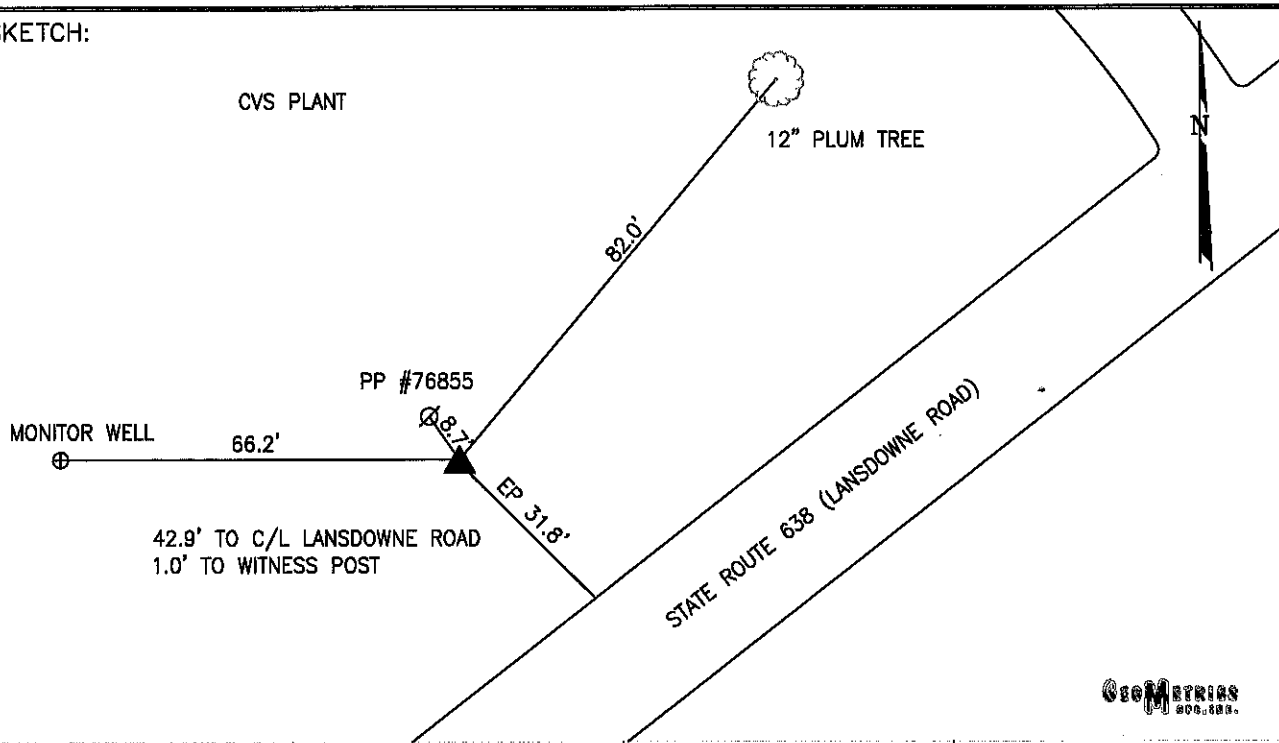
THE STATION IS LOCATED IN SPOTSYLVANIA COUNTY, VIRGINIA APPROXIMATELY 1.5 MILES SOUTH FROM THE CITY OF FREDERICKSBURG.

TO REACH THE STATION FROM THE POST OFFICE AT 600 PRINCESS ANNE STREET IN THE CITY OF FREDERICKSBURG, PROCEED SOUTHEAST ALONG PRINCESS ANNE STREET 0.3 MILE TO ITS INTERSECTION WITH DIXON STREET. TURN RIGHT AND PROCEED SOUTHWEST A DISTANCE OF 0.05 MILE TO ITS INTERSECTION WITH STATE ROUTE 2. TURN LEFT AND PROCEED SOUTH ALONG STATE ROUTE 2 A DISTANCE OF 1.2 MILES TO ITS INTERSECTION WITH STATE ROUTE 638 (LANSDOWNE ROAD). TURN RIGHT AND PROCEED WEST ALONG STATE ROUTE 638 (LANSDOWNE ROAD) A DISTANCE OF 0.5 MILE TO THE STATION ON THE RIGHT IN FRONT OF CVS.

THE STATION IS A 3 1/2 INCH SPOTSYLVANIA COUNTY, VA ALUMINUM SURVEY DISK SET IN A POURED IN PLACE CONCRETE MONUMENT FLUSH WITH THE GROUND SURFACE AND STAMPED CVS 2002.

THIS STATION IS INTERVISIBLE WITH STATION KAESER 2002.

SKETCH:



GeoMETRICS
INC.

DRAWN BY: KNT

CHECKED BY: CEN

DATE: 08/2002

APPROX. SCALE: 1" = 30'