

**SPOTSYLVANIA COUNTY VIRGINIA  
2003 CONTROL SURVEY**

JN 103-009

HORIZONTAL DATUM: NAD 83(2007) (REVISED 8-08)  
 VERTICAL DATUM: NAVD. 88  
 COORDINATE SYSTEM: VIRGINIA STATE PLANE, NORTH ZONE  
 UNITS: U.S. SURVEY FOOT

HORIZONTAL ORDER: FIRST  
 VERTICAL ORDER: THIRD

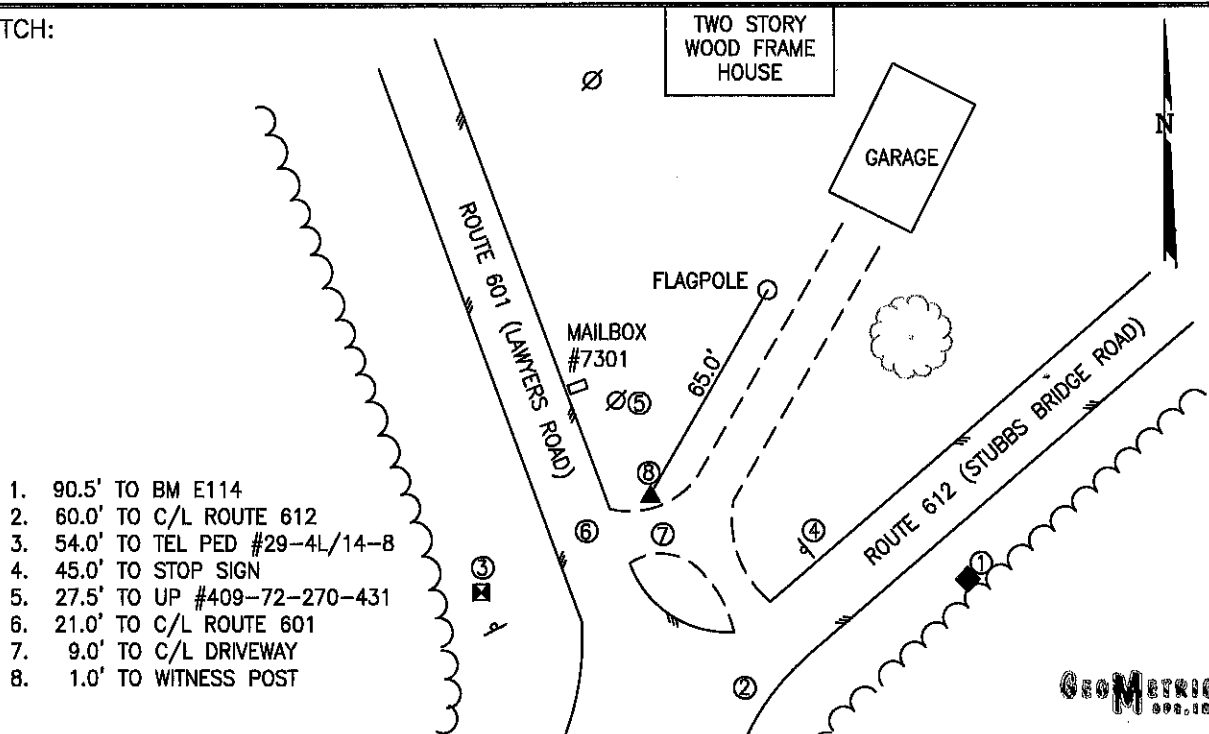
COUNTY	NAME OF STATION	YEAR
SPOTSYLVANIA	CROSSROADS	2003
N: 6741436.46	LAT: 38° 09' 30.05947" N	COMBINED FACTOR: 0.99996576
E: 11677324.25	LONG: 77° 49' 25.97251" W	⊖ ANGLE: 0° 25' 19"
ELEVATION: 410.47' (ESTABLISHED BY LEVELING)		
DISTANCES AND DIRECTIONS TO AZIMUTH MARKS		
STATION	GROUND DISTANCE	TRUE AZIMUTH

THE STATION IS LOCATED IN SOUTHWESTERN SPOTSYLVANIA COUNTY, VIRGINIA, ABOUT 1.9 KM (1.2 MILES) NORTHEAST OF THE ENTRANCE TO LAKE ANNA STATE PARK.

TO REACH THE STATION FROM THE INTERSECTION OF STATE ROUTE 606 (MORRIS ROAD) AND US HIGHWAY 1 (JEFFERSON DAVIS HIGHWAY) IN THORNBURG GO WESTERLY ON STATE ROUTE 606 FOR 7.2 KM (4.5 MILES) TO AN INTERSECTION. CONTINUE AND GO NORTHWESTERLY ON STATE ROUTE 208 FOR 5.3 KM (3.3 MILES) AN INTERSECTION. CONTINUE NORTHWESTERLY ON STATE ROUTE 606 (POST OAK ROAD) FOR 7.7 KM (4.8 MILES) TO ITS INTERSECTION WITH STATE ROUTE 659 (LANES CORNER ROAD). CONTINUE NORTHWESTERLY ON STATE ROUTE 606 FOR 6.4 KM (4.0 MILES) TO AN INTERSECTION. TURN LEFT AND GO SOUTHERLY ON STATE ROUTE 612 (STUBBS BRIDGE ROAD) FOR 5.1 KM (3.2 MILES) TO THE STATION ON THE RIGHT IN THE NORTHEAST CORNER OF THE INTERSECTION.

THE STATION IS AN 18 INCH BY 18 INCH CONCRETE PILLAR WITH A 3-1/2 INCH SPOTSYLVANIA COUNTY, VA, ALUMINUM SURVEY DISK PROJECTING 3 INCHES ABOVE THE GROUND SURFACE AND STAMPED CROSSROADS 2003.

SKETCH:



1. 90.5' TO BM E114
2. 60.0' TO C/L ROUTE 612
3. 54.0' TO TEL PED #29-4L/14-8
4. 45.0' TO STOP SIGN
5. 27.5' TO UP #409-72-270-431
6. 21.0' TO C/L ROUTE 601
7. 9.0' TO C/L DRIVEWAY
8. 1.0' TO WITNESS POST

GEOMETRICS  
SURV. INC.

DRAWN BY: BCL

CHECKED BY: LLR

DATE: 06/2003

APPROX. SCALE: 1" = 50'