

**SPOTSYLVANIA COUNTY VIRGINIA
2005 CONTROL SURVEY**

JN 104-085

HORIZONTAL DATUM: NAD 83(2007) (REVISED 8-08)
 VERTICAL DATUM: NAVD 88
 COORDINATE SYSTEM: VIRGINIA STATE PLANE, NORTH ZONE
 UNITS: U.S. SURVEY FOOT

HORIZONTAL ORDER: FIRST
 VERTICAL ORDER: THIRD

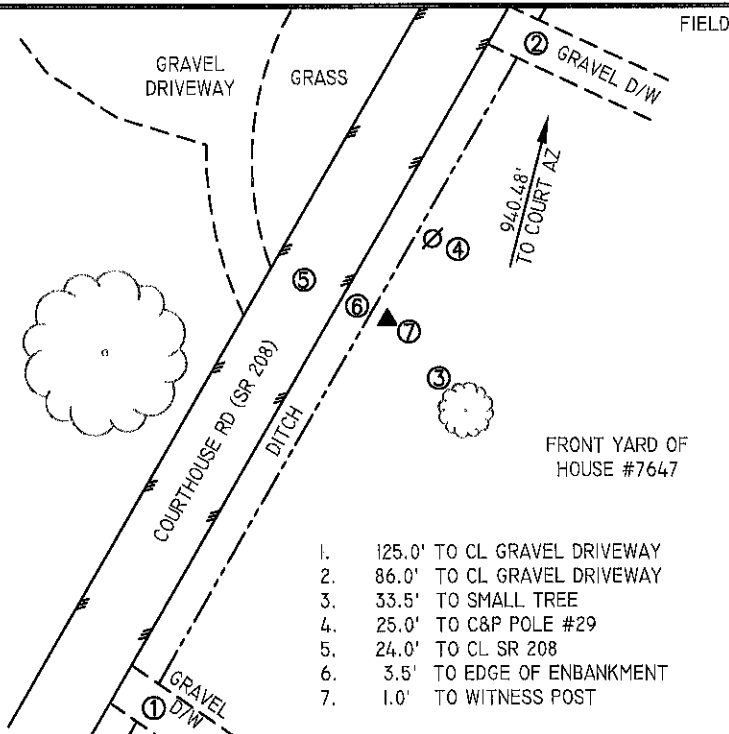
COUNTY	NAME OF STATION	YEAR
SPOTSYLVANIA	COURT	2005
N: 6743714.77	LAT: 38° 09' 46.96753" N	COMBINED FACTOR: 0.99997964
E: 11743248.80	LONG: 077° 35' 40.34743" W	∅ ANGLE: 0' 33' 54"
ELEVATION: 258.44' (ESTABLISHED BY GPS)		
DISTANCES AND DIRECTIONS TO AZIMUTH MARKS		
STATION	GROUND DISTANCE	TRUE AZIMUTH
COURT AZ	940.48	11°09'55"

THE STATION IS LOCATED IN SPOTSYLVANIA COUNTY, VIRGINIA, APPROXIMATELY 21.7 KM (13.5 MILES) EAST OF LOUISA AND 20.9 KM (13.0 MILES) SOUTHWEST OF THE SPOTSYLVANIA COUNTY COURTHOUSE.

TO REACH THE STATION FROM THE INTERSECTION OF SR 208 (COURTHOUSE ROAD) AND SR 613 (BROCK ROAD) AT THE SPOTSYLVANIA COUNTY COURTHOUSE, GO SOUTH ON SR 208 FOR 3.5 KM (2.2 MILES) TO ITS INTERSECTION WITH SNELL'S BRIDGE (PO RIVER). CONTINUE SOUTH ON SR 208 FOR 1.0 KM (0.6 MILE) TO THE STATION ON THE LEFT.

THE STATION IS A SPOTSYLVANIA COUNTY, VA ALUMINUM SURVEY DISK SET INTO A POURED IN PLACE CONCRETE MONUMENT 10 INCHES IN DIAMETER, FLUSH WITH THE GROUND SURFACE AND STAMPED COURT 2005. STATION COURT IS INTER-VISIBLE WITH STATION COURT AZ.

SKETCH:



1. 125.0' TO CL GRAVEL DRIVEWAY
2. 86.0' TO CL GRAVEL DRIVEWAY
3. 33.5' TO SMALL TREE
4. 25.0' TO C&P POLE #29
5. 24.0' TO CL SR 208
6. 3.5' TO EDGE OF ENBANKMENT
7. 1.0' TO WITNESS POST

GEOMETRICS
SURVEYING

DRAWN BY: BCL

CHECKED BY: DAR

DATE: 06/2005

APPROX. SCALE: 1" = 50'