

SPOTSYLVANIA COUNTY VIRGINIA
2006-2007 CONTROL SURVEY (RE-ADJUSTED 2008)

JN 106-134

HORIZONTAL DATUM: NAD 83(2007)
 VERTICAL DATUM: NAVD 88
 COORDINATE SYSTEM: VIRGINIA STATE PLANE, NORTH ZONE
 UNITS: U.S. SURVEY FOOT

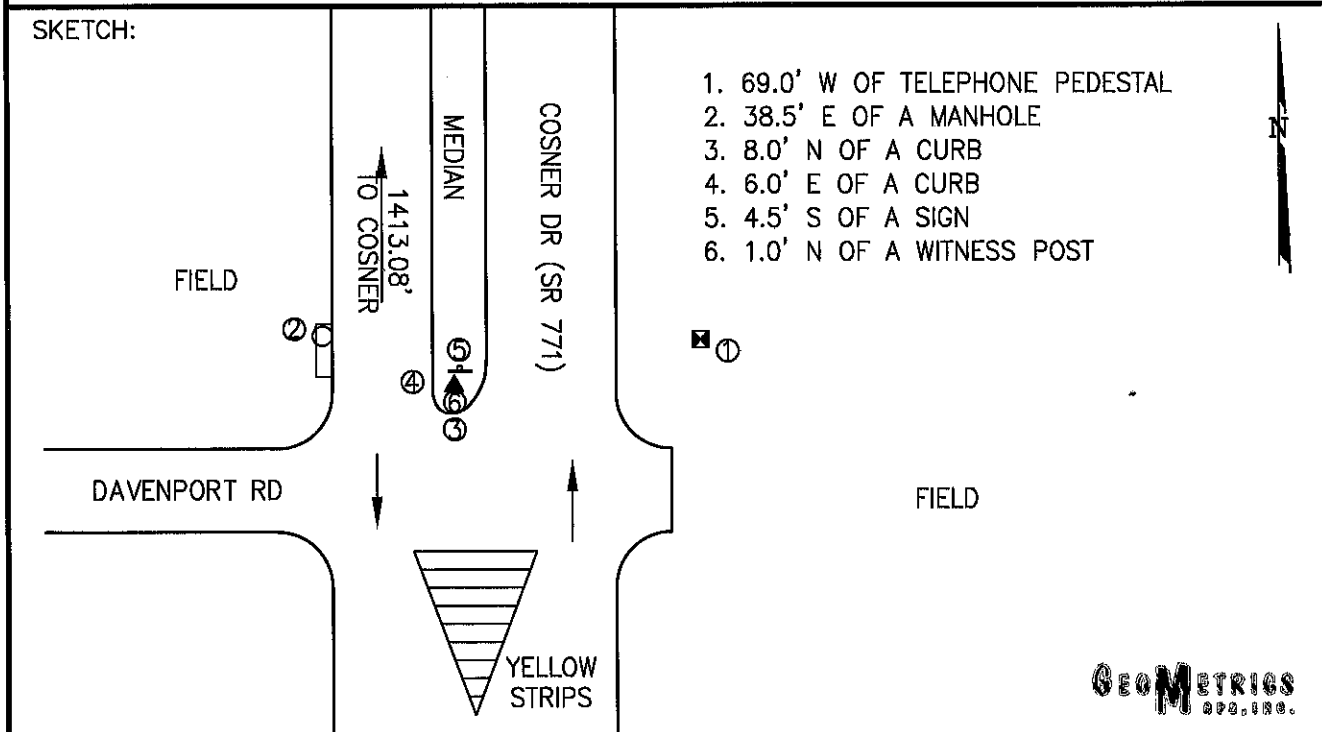
HORIZONTAL ORDER: FIRST
 VERTICAL ORDER: THIRD

COUNTY	NAME OF STATION	YEAR
SPOTSYLVANIA	COSNER AZ	2006
N: 6764507.93	LAT: 38° 13' 09.18883" N	COMBINED FACTOR: 0.99996520
E: 11775324.41	LONG: 077° 28' 55.86915" W	⊕ ANGLE: 0° 38' 07"
ELEVATION: 250.50' (ESTABLISHED BY GPS)		
DISTANCES AND DIRECTIONS TO AZIMUTH MARKS		
STATION	GROUND DISTANCE	TRUE AZIMUTH
COSNER	1413.08'	352° 46' 10"

THE STATION IS LOCATED ABOUT 9.2 KM (5.7 MILES) EAST OF SPOTSYLVANIA, AND 8.8 KM (5.5 MILES) SOUTH OF FREDERICKSBURG.

TO REACH THE STATION FROM THE INTERSECTION OF US HIGHWAY 1 (JEFFERSON DAVIS HIGHWAY) AND US HIGHWAY 17 (MILLS DRIVE), IN MASSAPONAX, GO SOUTH ON US 17 FOR 2.1 KM (1.3 MILES) TO ITS INTERSECTION WITH SR 771 (COSNER DRIVE). TURN RIGHT AND GO SOUTH ON SR 771 FOR 0.48 KM (0.3 MILE) TO THE STATION ON THE LEFT, IN THE MEDIAN.

THE STATION IS A STANDARD SPOTSYLVANIA COUNTY, VA ALUMINUM SURVEY DISK SET INTO A POURED IN PLACE CONCRETE MONUMENT 10 INCHES IN DIAMETER, FLUSH WITH GROUND SURFACE AND STAMPED COSNER AZ 2006.



DRAWN BY: BCL

CHECKED BY: DAR

DATE: 01/2007

APPROX. SCALE: 1" = 50'

GEOMETRICS
SPS, INC.