

**SPOTSYLVANIA COUNTY VIRGINIA  
2003-2004 CONTROL SURVEY**

JN 103-060

HORIZONTAL DATUM: NAD 83(2007) (REVISED 8-08)  
 VERTICAL DATUM: NAVD 88  
 COORDINATE SYSTEM: VIRGINIA STATE PLANE, NORTH ZONE  
 UNITS: U.S. SURVEY FOOT

HORIZONTAL ORDER: FIRST  
 VERTICAL ORDER: THIRD

COUNTY	NAME OF STATION	YEAR
SPOTSYLVANIA	COMMON	2003
N: 6763331.03	LAT: 38° 12' 58.35094" N	COMBINED FACTOR: 0.99997276
E: 11767970.64	LONG: 77° 30' 28.17058" W	∅ ANGLE: 0° 37' 09"
ELEVATION: 173.30'	(ESTABLISHED BY GPS)	
DISTANCES AND DIRECTIONS TO AZIMUTH MARKS		
STATION	GROUND DISTANCE	TRUE AZIMUTH
WEALTH	1938.51'	347° 14' 05"

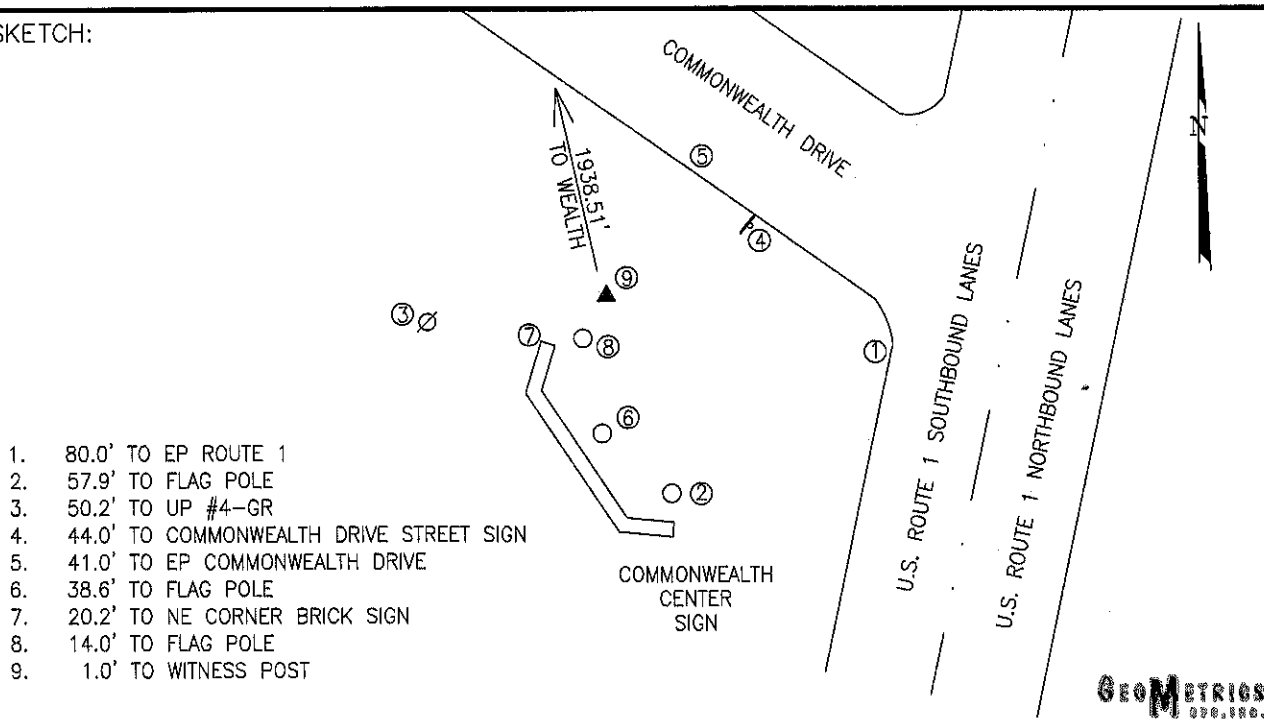
THE STATION IS LOCATED IN SPOTSYLVANIA COUNTY, VIRGINIA, APPROXIMATELY 10.1 KM (6.3 MILES) SOUTHWEST OF THE CITY OF FREDERICKSBURG AND 7.2 KM (4.5 MILES) NORTHEAST OF THE SPOTSYLVANIA COURTHOUSE.

TO REACH THE STATION FROM THE INTERSECTION OF US HIGHWAY 1 (JEFFERSON DAVIS HIGHWAY) AND US HIGHWAY 17 SOUTH, GO SOUTH ON US HIGHWAY 1 FOR 1.3 KM (0.8 MILE) TO ITS INTERSECTION WITH COMMONWEALTH DRIVE AND THE STATION ON THE RIGHT.

STATION COMMON IS INTERVISIBLE WITH STATION WEALTH.

THE STATION IS A 3 1/2 INCH SPOTSYLVANIA COUNTY, VA ALUMINUM SURVEY DISK SET INTO A POURED IN PLACE CONCRETE MONUMENT 10 INCHES IN DIAMETER, RECESSED TWO INCHES BELOW THE GROUND SURFACE AND STAMPED COMMON 2003.

SKETCH:



1. 80.0' TO EP ROUTE 1
2. 57.9' TO FLAG POLE
3. 50.2' TO UP #4-GR
4. 44.0' TO COMMONWEALTH DRIVE STREET SIGN
5. 41.0' TO EP COMMONWEALTH DRIVE
6. 38.6' TO FLAG POLE
7. 20.2' TO NE CORNER BRICK SIGN
8. 14.0' TO FLAG POLE
9. 1.0' TO WITNESS POST

**GEOMETRICS**  
SURVEYING