

**SPOTSYLVANIA COUNTY VIRGINIA  
2003 CONTROL SURVEY**

JN 103--009

HORIZONTAL DATUM: NAD 83(2007) (REVISED 8-08)  
 VERTICAL DATUM: NAVD 88  
 COORDINATE SYSTEM: VIRGINIA STATE PLANE, NORTH ZONE  
 UNITS: U.S. SURVEY FOOT

HORIZONTAL ORDER: FIRST  
 VERTICAL ORDER: THIRD

COUNTY	NAME OF STATION	YEAR
SPOTSYLVANIA	COALSONS	2003
N: 6739173.83	LAT: 38° 09' 07.60078" N	COMBINED FACTOR: 0.99996661
E: 11678579.46	LONG: 77° 49' 10.46744" W	Θ ANGLE: 0° 25' 29"
ELEVATION: 410.89' (ESTABLISHED BY GPS)		

DISTANCES AND DIRECTIONS TO AZIMUTH MARKS

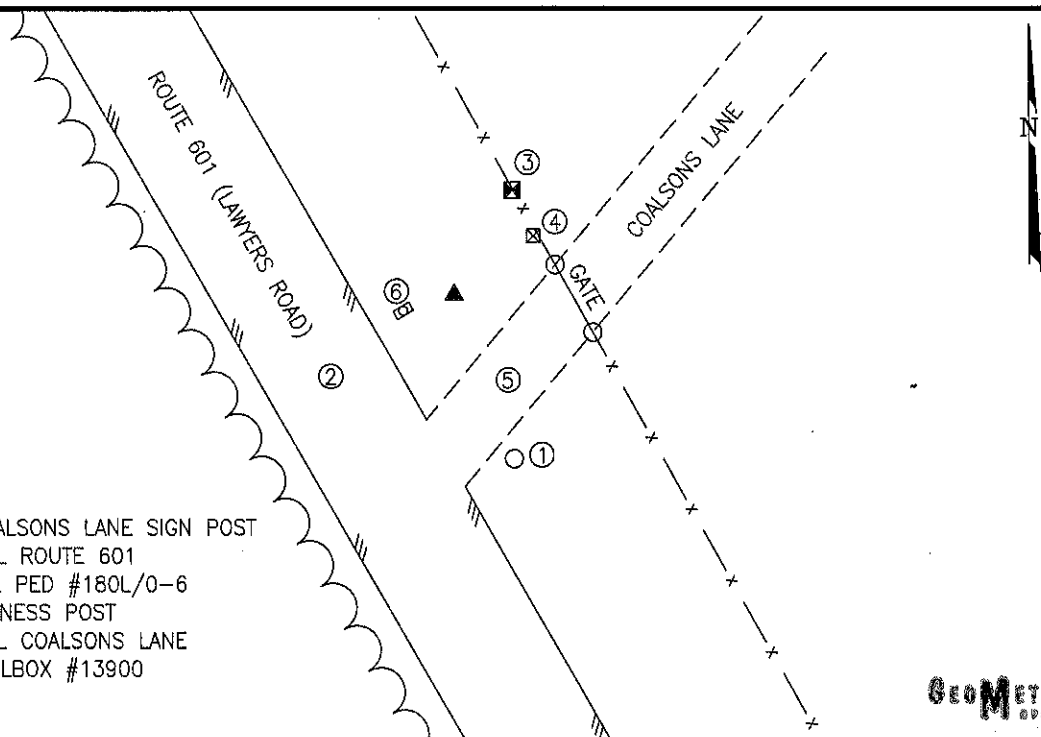
STATION	GROUND DISTANCE	TRUE AZIMUTH

THE STATION IS LOCATED IN SOUTHWESTERN SPOTSYLVANIA COUNTY, VIRGINIA, ABOUT 13 MILES SOUTHWEST OF THE SPOTSYLVANIA COUNTY COURTHOUSE. THE STATION IS IN THE NORTHEAST CORNER OF THE INTERSECTION OF STATE ROUTE 601 (LAWYERS ROAD) AND COALSONS LANE.

TO REACH THE STATION FROM THE INTERSECTION OF STATE ROUTE 606 (MORRIS ROAD) AND US HIGHWAY 1 (JEFFERSON DAVIS HIGHWAY) IN THORNBURG GO WESTERLY ON STATE ROUTE 606 FOR 7.2 KM (4.5 MILES) TO AN INTERSECTION. CONTINUE AND GO NORTHWESTERLY ON STATE ROUTE 208 (COURTHOUSE ROAD) FOR 3.7 KM (2.3 MILES) TO STATE ROUTE 648 (BLOCKHOUSE ROAD). CONTINUE NORTHWESTERLY ON STATE ROUTE 208 FOR 1.9 KM (1.2 MILES) TO AN INTERSECTION. TURN LEFT AND GO SOUTHWESTERLY ON STATE ROUTE 208 FOR 6.4 KM (4.0 MILES) TO STATE ROUTE 602 (MASSEY ROAD) AND A SHELL GAS STATION ON THE RIGHT. CONTINUE SOUTHWESTERLY ON STATE ROUTE 208 FOR 4.8 KM (3.0 MILES) TO AN INTERSECTION. TURN RIGHT AND GO NORTHWESTERLY ON STATE ROUTE 601 (LAWYERS ROAD) FOR 6.4 KM (4.0 MILES) TO THE INTERSECTION WITH COALSONS LANE AND THE STATION ON THE RIGHT.

THE STATION IS A 3-1/2 INCH SPOTSYLVANIA COUNTY, VA, ALUMINUM SURVEY DISK SET INTO A POURED IN PLACE CONCRETE MONUMENT 8 INCHES IN DIAMETER FLUSH WITH THE GROUND SURFACE AND STAMPED COALSONS 2003.

SKETCH:



1. 29.3' TO COALSONS LANE SIGN POST
2. 25.0' TO C/L ROUTE 601
3. 19.5' TO TEL PED #180L/0-6
4. 16.2' TO WITNESS POST
5. 16.0' TO C/L COALSONS LANE
6. 9.0' TO MAILBOX #13900

**GEOMETRICS**  
SVP, INC.

DRAWN BY: BCL

CHECKED BY: LLR

DATE: 06/2003

APPROX. SCALE: 1" = 30'