

SPOTSYLVANIA COUNTY, VIRGINIA
E911 GPS SURVEY REVISED 10/2008

W.O. 95007

MAP PROJECTION: LAMBERT ORDER OF SURVEY: FIRST
NAD 83(2007) * VIRGINIA STATE PLANE COORDINATE SYSTEM * NORTH ZONE

COUNTY	NAME OF STATION	YEAR
SPOTSYLVANIA	CATHARPIN	1995

N: 6764099.59 E: 11687666.97 LAT.: 38°13'13.31948"N LONG.: 77°47'14.28150"W

GRID FACTOR: 0.99997226 SEA LEVEL FACTOR: 0.99998536 \ominus ANGLE: +0°26'41.31"

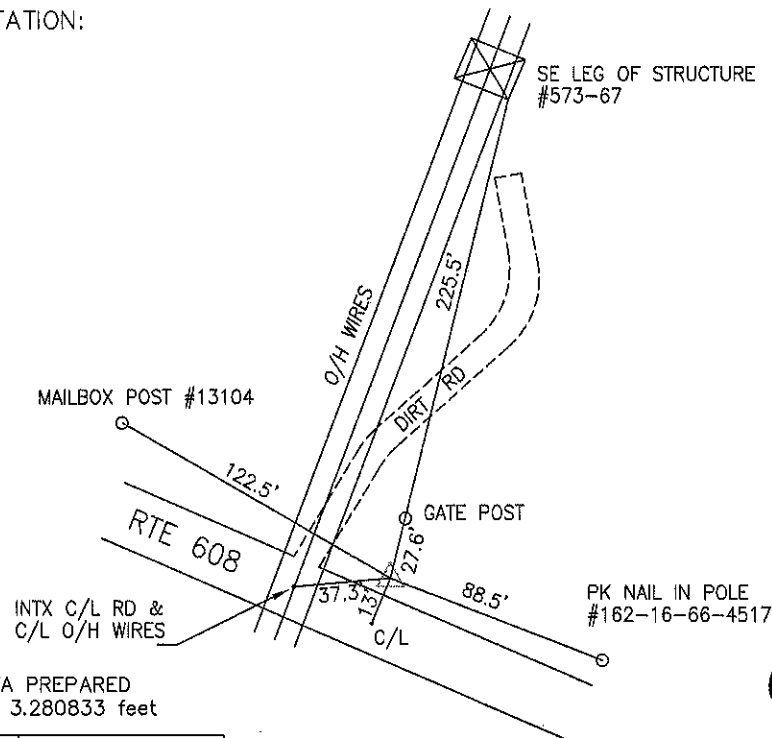
ESTABLISHED BY: GeoMetrics GPS, INC. YEAR: 1995 DISTANCES AND DIRECTIONS TO REFERENCE MARKS AND PROMINENT OBJECTS OBSERVED AT STATION

	OBJECT	DISTANCE-FT.	MAG. AZIMUTH
VERTICAL DATUM	NAVD 88		
ELEVATION (FT.)	411.78		
RECOVERED:	OCT 2000		

DESCRIPTION OF STATION:

The station is a Spotsylvania County survey disk set in concrete stamped CATHARPIN 1995 located in Spotsylvania County, Virginia, approximately 2.5 miles east of Paytes. To reach the station from the intersection of Route 608 (West Catharpin Road/Robert E Lee Drive) and Route 612 (Catharpin Road) at Shady Grove proceed west along Route 608 (West Catharpin Road) 4.5 miles to its intersection with an electric transmission line and the station on the right. Monument is 2 inches below ground. Witness post set N30°E at 8.0 feet.

SKETCH OF STATION:



THIS SURVEY DATA PREPARED
USING 1 meter = 3.280833 feet

PREPARED BY: EJP	DATE: AUG '95
CHECKED BY: DAR	DATE: AUG '95

NOTE:
IN 2008 THE COORDINATES WERE CONVERTED TO
NAD83(2007) BY APPLYING A COMPUTED SHIFT

GEO METRICS
GPS, INC.

236 CAMBRIDGE ROAD
FREDERICKSBURG, VIRGINIA
(540) 372-3499