

**SPOTSYLVANIA COUNTY VIRGINIA  
2007 GEODETIC CONTROL SURVEY**

JN 107-065

HORIZONTAL DATUM: NAD 83(2007)  
VERTICAL DATUM: NAVD 88  
COORDINATE SYSTEM: VIRGINIA STATE PLANE, NORTH ZONE  
UNITS: U.S. SURVEY FOOT

HORIZONTAL ORDER: FIRST  
VERTICAL ORDER: THIRD

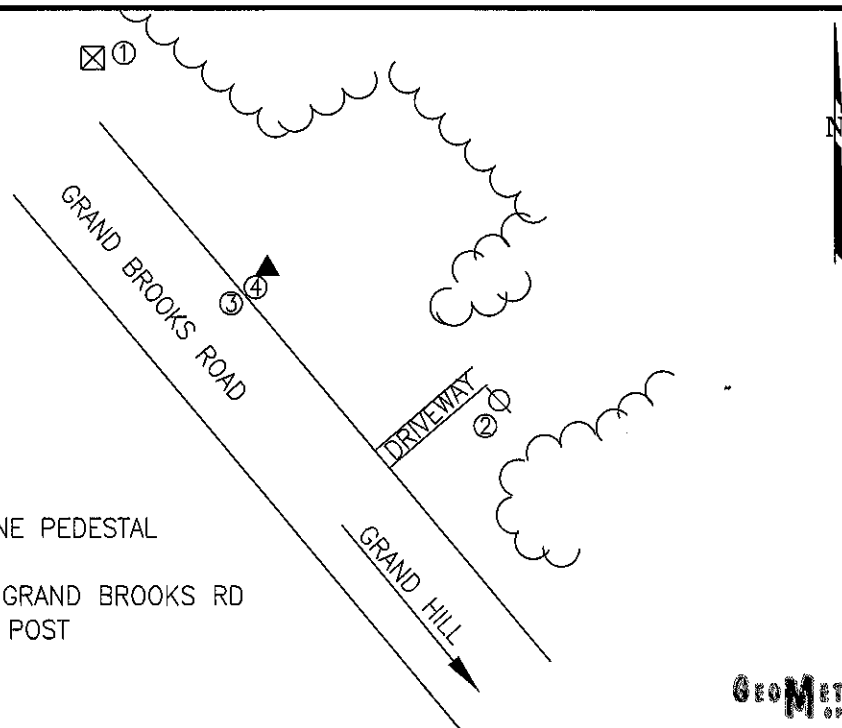
COUNTY	NAME OF STATION	YEAR
SPOTSYLVANIA	BROOKS	2007
N: 6743713.89	LAT: 38° 09' 51.77894" N	COMBINED FACTOR: 0.99996480
E: 11687936.29	LONG: 77° 47' 12.89107" W	Θ ANGLE: 0° 26' 42"
ELEVATION: 413.21'	(ESTABLISHED BY GPS)	
DISTANCES AND DIRECTIONS TO AZIMUTH MARKS		
STATION	GROUND DISTANCE	TRUE AZIMUTH
GRAND HILL	1346.23	128° 08' 17"

THE STATION IS LOCATED ABOUT 17.7 KM (11.0 MILES) WEST OF SPOTSYLVANIA, AND 15.4 KM (9.6 MILES) SOUTH OF LOCUST GROVE.

TO REACH THE STATION FROM THE INTERSECTION OF SR 208 (COURTHOUSE ROAD) AND SR 613 (BROCK ROAD), AT THE SPOTSYLVANIA COURTHOUSE, GO NORTH ON SR 613 FOR 0.8 KM (0.5 MILE) TO ITS INTERSECTION WITH SR 608 (ROBERT E LEE DRIVE). TURN LEFT AND GO WEST ON SR 608 FOR 1.9 KM (1.2 MILES) TO ITS INTERSECTION WITH SR 648 (BLOCKHOUSE ROAD). TURN LEFT AND GO SOUTH ON SR 648 FOR 4.7 KM (2.9 MILES) TO ITS INTERSECTION WITH SR 208. TURN RIGHT AND GO WEST ON SR 208 FOR 7.1 KM (4.4 MILES) TO ITS INTERSECTION WITH SR 718 (HEBRON CHURCH ROAD). CONTINUE WEST ON SR 208 FOR 6.6 KM (4.1 MILES) TO ITS INTERSECTION WITH SR 601 (LAWYERS ROAD). TURN RIGHT AND GO NORTH ON SR 601 FOR 2.6 KM (1.6 MILES) TO ITS INTERSECTION WITH SR 721 (GRAND BROOKS ROAD). TURN RIGHT AND GO NORTH ON SR 721 FOR 4.2 KM (2.6 MILES) TO THE STATION ON THE RIGHT.

THE STATION IS A STANDARD SPOTSYLVANIA COUNTY, VA ALUMINUM SURVEY DISK SET INTO A Poured IN PLACE CONCRETE MONUMENT 10 INCHES IN DIAMETER, FLUSH WITH GROUND SURFACE AND STAMPED BROOKS 2007.

SKETCH:



1. 60.0' SE OF A TELEPHONE PEDESTAL
2. 59.0' NW OF A UP
3. 8.0' N OF THE EP OF GRAND BROOKS RD
4. 1.0' NE OF A WITNESS POST

**GEOMETRICS**  
SURVEYING

DRAWN BY: KLS

CHECKED BY: DAR

DATE: 06/2008

APPROX. SCALE: 1" = 40'