

SPOTSYLVANIA COUNTY, VIRGINIA
E911 GPS SURVEY REVISED 10/2008

W.O. 95007

MAP PROJECTION: LAMBERT ORDER OF SURVEY: FIRST
NAD 83(2007) * VIRGINIA STATE PLANE COORDINATE SYSTEM * NORTH ZONE

COUNTY	NAME OF STATION	YEAR
SPOTSYLVANIA	BROKENBURG	1995

N: 6731725.08	E: 11703334.97	LAT.: 38°07'52.03883"N	LONG.: 77°44'01.34137"W
---------------	----------------	------------------------	-------------------------

GRID FACTOR: 0.99998418	SEA LEVEL FACTOR: 0.99998764	⊖ ANGLE: +0°28'41.73"
-------------------------	------------------------------	-----------------------

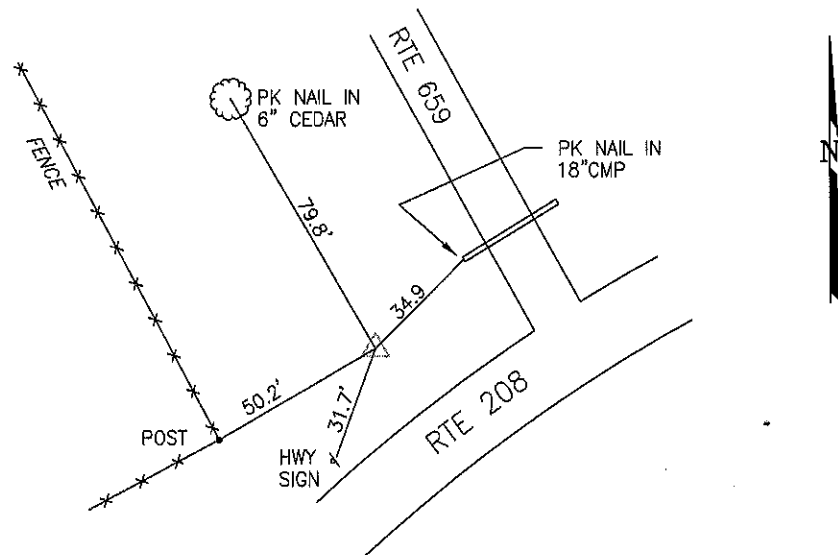
ESTABLISHED BY: GeoMetrics GPS, INC.	YEAR 1995	DISTANCES AND DIRECTIONS TO REFERENCE MARKS AND PROMINENT OBJECTS OBSERVED AT STATION	
---	--------------	--	--

	OBJECT	DISTANCE-FT.	MAG. AZIMUTH
VERTICAL DATUM NAVD 88			
ELEVATION (FT.) 363.98			
RECOVERED: OCT 2000			

DESCRIPTION OF STATION:

The station is a Spotsylvania County survey disk set in concrete stamped Brokenburg 1995 located in Spotsylvania County, Virginia, approximately 1.5 miles southwest of Brokenburg. To reach the station from the intersection of Route 208 (Courthouse Road) and Route 606 (Post Oak Road) at Post Oak proceed west along Route 208 (Courthouse Road) 4.7 miles to its intersection with Route 659 (Lanes Corner Road). The station is on the right, immediately past Route 659 (Lanes Corner Road). Witness post set N50°W at 1.2 feet.

SKETCH OF STATION:



THIS SURVEY DATA PREPARED
USING 1 meter = 3.280833 feet

PREPARED BY: EJP	DATE: AUG '95
CHECKED BY: DAR	DATE: AUG '95

NOTE:
IN 2008 THE COORDINATES WERE CONVERTED TO
NAD83(2007) BY APPLYING A COMPUTED SHIFT

GEOMETRICS
GPS, INC.

236 CAMBRIDGE ROAD
FREDERICKSBURG, VIRGINIA
(540) 372-3499