

SPOTSYLVANIA COUNTY, VA  
 GEODETIC SURVEY CONTROL

JN 100058

MAP PROJECTION: LAMBERT (REVISED 8-08)  
 NAD 83(2007) \* VIRGINIA STATE PLANE COORDINATE SYSTEM \* NORTH ZONE \* U.S. SURVEY FOOT

HORIZONTAL ORDER: FIRST

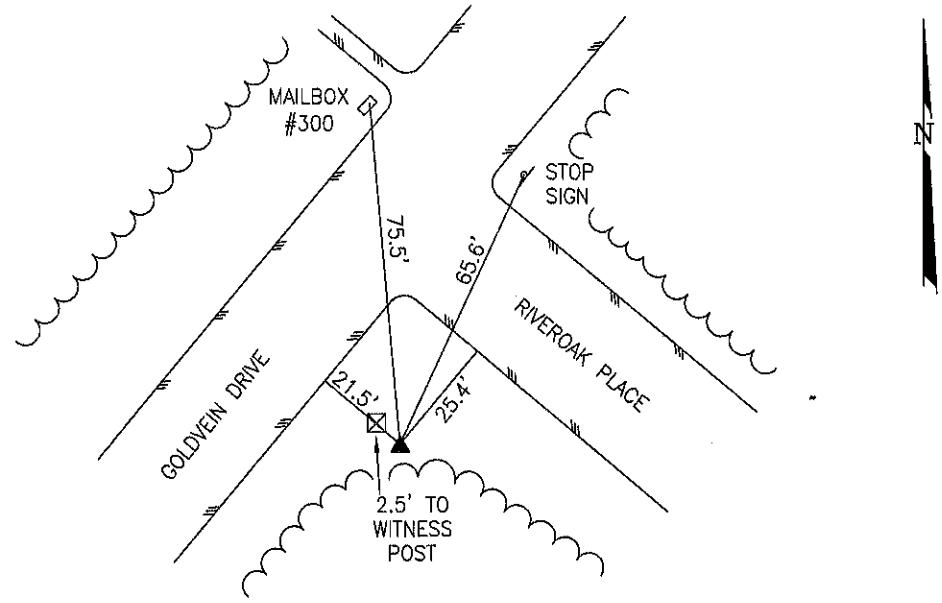
COUNTY	NAME OF STATION	YEAR
SPOTSYLVANIA	BLUFF	2001

N: 6809632.30	E: 11748158.35	LAT: 38°20'38.08684"	LONG: 077°34'30.56380"
GRID FACTOR: 0.99995972	COMBINED FACTOR: 0.99994763	⊕ ANGLE: 0°34'38.0"	

ESTABLISHED BY: GeoMetrics GPS, INC.	DISTANCES AND DIRECTIONS TO REFERENCE MARKS AND PROMINENT OBJECTS OBSERVED AT STATION		
	OBJECT	GROUND DISTANCE	TRUE AZIMUTH
VERTICAL DATUM NAVD 88	(SEE SKETCH BELOW)		
ELEVATION (FT.) 252.82			
VERTICAL ORDER: THIRD			

TO REACH:  
 THE STATION IS LOCATED IN NORTHERN SPOTSYLVANIA COUNTY, VIRGINIA. TO REACH THE STATION FROM THE INTERSECTION OF I-95 AND PLANK ROAD (ROUTE 3) PROCEED WEST ALONG PLANK ROAD (ROUTE 3) A DISTANCE OF 0.8 MILE TO ITS INTERSECTION WITH BRAGG ROAD (ROUTE 639). TURN RIGHT AND PROCEED NORTH ALONG BRAGG ROAD (ROUTE 639) A DISTANCE OF 0.9 MILE TO ITS INTERSECTION WITH RIVER ROAD (ROUTE 618). TURN LEFT AND PROCEED WEST ALONG RIVER ROAD (ROUTE 618) A DISTANCE OF 4.1 MILES TO ITS INTERSECTION WITH RIVER BLUFFS DRIVE. TURN RIGHT AND PROCEED NORTH ALONG RIVER BLUFFS DRIVE A DISTANCE OF 0.4 MILE TO ITS INTERSECTION WITH GOLDVEIN DRIVE. TURN LEFT AND PROCEED NORTH ALONG GOLDVEIN DRIVE A DISTANCE OF 0.5 MILE ITS INTERSECTION WITH RIVER OAK PLACE AND THE TO THE STATION ON THE RIGHT IN THE SOUTHEAST CORNER OF THE INTERSECTION.

SKETCH OF STATION:  
 APPROX. SCALE: 1" = 40'



THIS SURVEY DATA PREPARED  
 USING 1 meter = 3.28083333 feet

PREPARED BY: BCL	5/01
CHECKED BY: LLR	8/01

**GEOMETRICS**  
 GPS, INC.  
 236 CAMBRIDGE STREET  
 FREDERICKSBURG, VIRGINIA  
 (540) 372-3499