

**SPOTSYLVANIA COUNTY VIRGINIA  
2005 CONTROL SURVEY**

JN 104-085

HORIZONTAL DATUM: NAD 83(2007) (REVISED 8-08)  
 VERTICAL DATUM: NAVD 88  
 COORDINATE SYSTEM: VIRGINIA STATE PLANE, NORTH ZONE  
 UNITS: U.S. SURVEY FOOT

HORIZONTAL ORDER: FIRST  
 VERTICAL ORDER: THIRD

COUNTY	NAME OF STATION	YEAR
SPOTSYLVANIA	BLAYDES AZ	2005
N: 6713599.55	LAT: 38° 04' 48.86546" N	COMBINED FACTOR: 0.99999205
E: 11747396.59	LONG: 077° 34' 52.18977" W	Ø ANGLE: 0° 34' 24"
ELEVATION: 319.28' (ESTABLISHED BY GPS)		
DISTANCES AND DIRECTIONS TO AZIMUTH MARKS		
STATION	GROUND DISTANCE	TRUE AZIMUTH
BLAYDES	814.30	266°06'46"

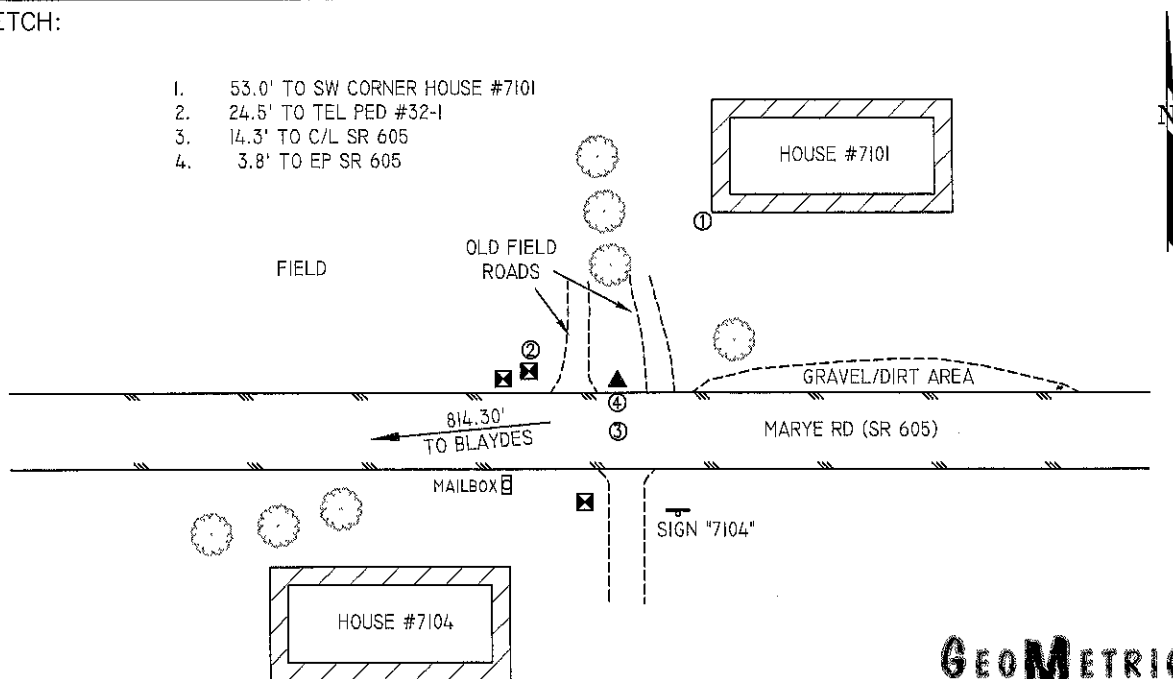
THE STATION IS LOCATED IN SPOTSYLVANIA COUNTY, VIRGINIA, APPROXIMATELY 9.2 KM (5.7 MILES) NORTHWEST OF LADYSMITH, AND 8.5 KM (5.3 MILES) SOUTHWEST OF THORNBURG.

TO REACH THE STATION FROM THE INTERSECTION OF US HIGHWAY 1 (JEFFERSON DAVIS HIGHWAY) AND SR 606 (MORRIS ROAD) AT THORNBURG, GO SOUTH ON US HIGHWAY 1 FOR 3.1 KM (1.9 MILES) TO ITS INTERSECTION WITH SR 603 (ARCADIA ROAD). BEAR RIGHT AND GO SOUTHWEST ON SR 603 FOR 1.5 KM (0.9 MILE) TO ITS INTERSECTION WITH SR 605 (MARYE ROAD). TURN RIGHT AND GO NORTHWEST ON SR 605 FOR 4.2 KM (2.6 MILES) TO ITS INTERSECTION WITH SR 646 (STANFIELD ROAD). CONTINUE WEST ON SR 605 FOR 0.6 KM (0.4 MILE) TO THE STATION ON THE RIGHT.

THE STATION IS A SPOTSYLVANIA COUNTY, VA ALUMINUM SURVEY DISK SET INTO A Poured IN PLACE CONCRETE MONUMENT 10 INCHES IN DIAMETER, AND FLUSH WITH THE GROUND SURFACE AND STAMPED BLAYDES AZ 2005. STATION BLAYDES AZ IS INTER-VISIBLE WITH STATION BLAYDES.

SKETCH:

1. 53.0' TO SW CORNER HOUSE #7101
2. 24.5' TO TEL PED #32-1
3. 14.3' TO C/L SR 605
4. 3.8' TO EP SR 605



**GEOMETRICS**  
CPS, INC.

DRAWN BY: BCL

CHECKED BY: DAR

DATE: 06/2005

APPROX. SCALE: 1" = 50'