

**SPOTSYLVANIA COUNTY VIRGINIA
2005 CONTROL SURVEY**

JN 104-085

HORIZONTAL DATUM: NAD 83(2007) (REVISED 8-08)
 VERTICAL DATUM: NAVD 88
 COORDINATE SYSTEM: VIRGINIA STATE PLANE, NORTH ZONE
 UNITS: U.S. SURVEY FOOT

HORIZONTAL ORDER: FIRST
 VERTICAL ORDER: THIRD

COUNTY	NAME OF STATION	YEAR
SPOTSYLVANIA	BLAYDES	2005
N: 6713536.21	LAT: 38° 04' 48.31957" N	COMBINED FACTOR: 0.99999208
E: 11746584.76	LONG: 077° 35' 02.35039" W	Θ ANGLE: 0° 34' 18"
ELEVATION: 316.04' (ESTABLISHED BY GPS)		
DISTANCES AND DIRECTIONS TO AZIMUTH MARKS		
STATION	GROUND DISTANCE	TRUE AZIMUTH
BLAYDES AZ	814.30	86°06'40"

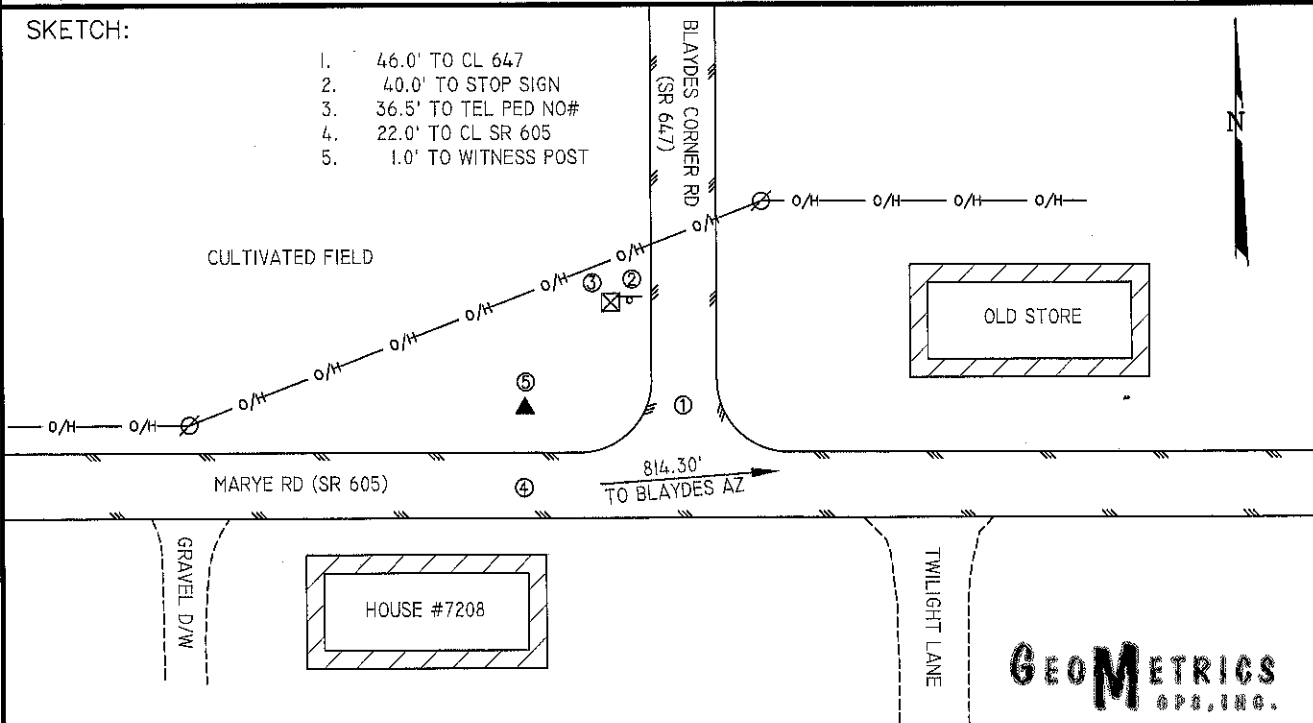
THE STATION IS LOCATED IN SPOTSYLVANIA COUNTY, VIRGINIA, APPROXIMATELY 9.2 KM (5.7 MILES) NORTHWEST OF LADYSMITH, AND 8.0 KM (5.0 MILES) SOUTHWEST OF THORNBURG.

TO REACH THE STATION FROM THE INTERSECTION OF US HIGHWAY 1 (JEFFERSON DAVIS HIGHWAY) AND SR 606 (MORRIS ROAD) AT THORNBURG, GO SOUTH ON US HIGHWAY 1 FOR 3.1 KM (1.9 MILES) TO ITS INTERSECTION WITH SR 603 (ARCADIA ROAD). BEAR RIGHT AND GO SOUTHWEST ON SR 603 FOR 1.5 KM (0.9 MILE) TO ITS INTERSECTION WITH SR 605 (MARYE ROAD). TURN RIGHT AND GO NORTHWEST ON SR 605 FOR 5.2 KM (3.2 MILES) TO ITS INTERSECTION WITH SR 647 (BLAYDES CORNER ROAD) AND THE STATION IN THE NORTHWEST QUADRANT OF THE INTERSECTION.

THE STATION IS A SPOTSYLVANIA COUNTY, VA ALUMINUM SURVEY DISK SET INTO A Poured IN PLACE CONCRETE MONUMENT 10 INCHES IN DIAMETER, FLUSH WITH THE GROUND SURFACE AND STAMPED BLAYDES 2005. STATION BLAYDES IS INTER-VISIBLE WITH STATION BLAYDES AZ.

SKETCH:

1. 46.0' TO CL 647
2. 40.0' TO STOP SIGN
3. 36.5' TO TEL PED NO#
4. 22.0' TO CL SR 605
5. 1.0' TO WITNESS POST



GEOMETRICS
GPS, INC.

DRAWN BY: BCL

CHECKED BY: DAR

DATE: 06/2005

APPROX. SCALE: 1" = 50'