

SPOTSYLVANIA COUNTY, VIRGINIA
E911 GPS SURVEY REVISED 10/2008

W.O. 95007

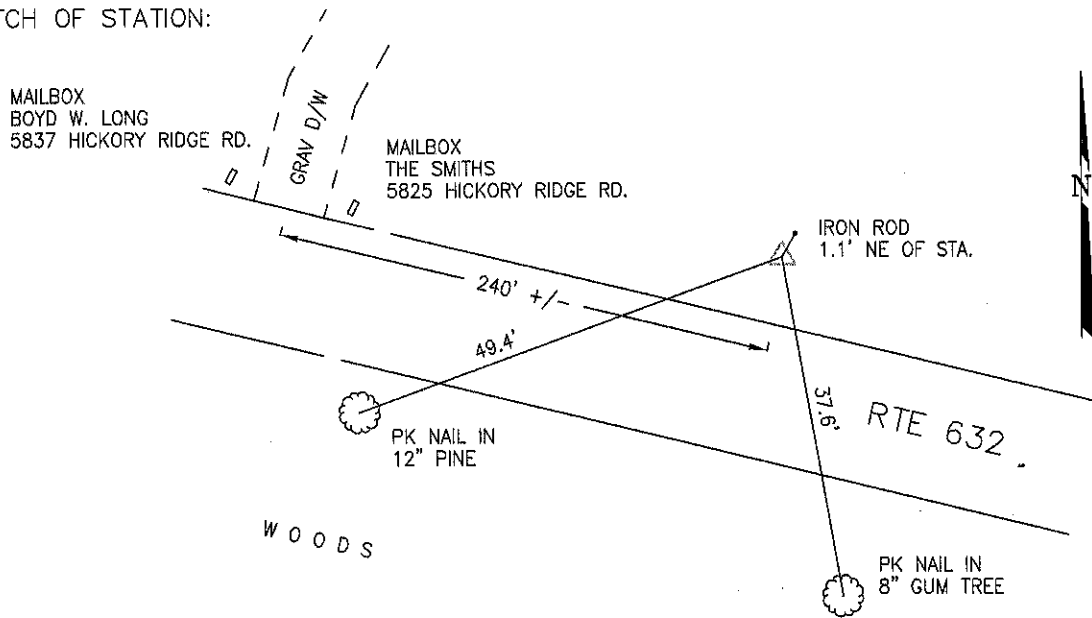
MAP PROJECTION: LAMBERT ORDER OF SURVEY: FIRST
NAD 83(2007) * VIRGINIA STATE PLANE COORDINATE SYSTEM * NORTH ZONE

COUNTY		NAME OF STATION		YEAR
SPOTSYLVANIA		BIGO		1995
N: 6745809.43	E: 11760683.83	LAT.: 38°10'05.91660"N	LONG.: 77°32'01.78067"W	
GRID FACTOR: 0.99997892	SEA LEVEL FACTOR: 0.99999235		ϕ ANGLE: +0°36'10.82"	
ESTABLISHED BY: GeoMetrics GPS, INC.	YEAR 1995	DISTANCES AND DIRECTIONS TO REFERENCE MARKS AND PROMINENT OBJECTS OBSERVED AT STATION		
		OBJECT	DISTANCE--FT.	MAG. AZIMUTH
VERTICAL DATUM NAVD 88				
ELEVATION (FT.) 265.79				
RECOVERED: NOV 2000				

DESCRIPTION OF STATION:

The station is a Spotsylvania County survey disk set in concrete stamped BIGO 1995 located in Spotsylvania County, Virginia, approximately 5.0 miles southeast of the Spotsylvania Court House. To reach the station from the intersection of Interstate 95 and Route 1 (Jefferson Davis Highway) at Massaponax proceed south along Route 1 (Jefferson Davis Highway) 5.0 miles to its intersection with Route 632 (Hickory Ridge Lane). Turn right and proceed west along Route 632 (Hickory Ridge Road) 0.9 miles to the station on the right. Witness post set N55°E at 16.2 feet.

SKETCH OF STATION:



THIS SURVEY DATA PREPARED
USING 1 meter = 3.280833 feet

GEOMETRICS
GPS, INC.

236 CAMBRIDGE ROAD
FREDERICKSBURG, VIRGINIA
(540) 372-3499

PREPARED BY: EJP	DATE: AUG '95
CHECKED BY: DAR	DATE: AUG '95

NOTE:
IN 2008 THE COORDINATES WERE CONVERTED TO
NAD83(2007) BY APPLYING A COMPUTED SHIFT