

**SPOTSYLVANIA COUNTY VIRGINIA  
2006-2007 CONTROL SURVEY (RE-ADJUSTED 2008)**

JN 106-134

HORIZONTAL DATUM: NAD 83(2007)  
VERTICAL DATUM: NAVD 88  
COORDINATE SYSTEM: VIRGINIA STATE PLANE, NORTH ZONE  
UNITS: U.S. SURVEY FOOT

HORIZONTAL ORDER: FIRST  
VERTICAL ORDER: THIRD

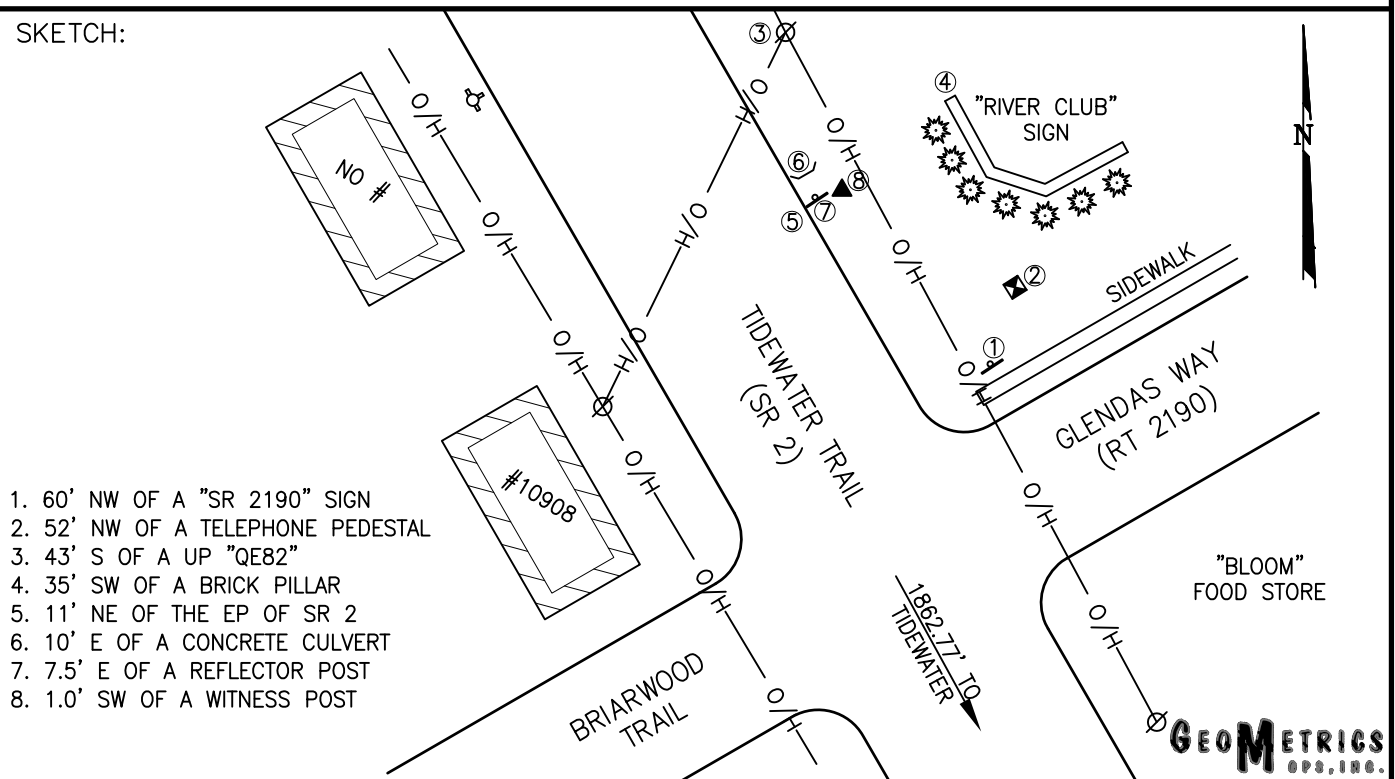
COUNTY	NAME OF STATION	YEAR
SPOTSYLVANIA	TIDEWATER AZ	2006
N: 6778118.06	LAT: 38° 15' 22.03600" N	COMBINED FACTOR: 0.99997003
E: 11790343.87	LONG: 077° 25' 45.68966" W	⊖ ANGLE: 0° 40' 06"
ELEVATION: 71.64' (ESTABLISHED BY GPS)		
DISTANCES AND DIRECTIONS TO AZIMUTH MARKS		
STATION	GROUND DISTANCE	TRUE AZIMUTH
TIDEWATER	1862.77'	141° 32' 19"

THE STATION IS LOCATED ABOUT 15.1 KM (9.4 MILES) NORTHEAST OF SPOTSYLVANIA, AND 6.0 KM (3.7 MILES) SOUTH OF FREDERICKSBURG.

TO REACH THE STATION FROM THE INTERSECTION OF US HIGHWAY 17 (MILLS DRIVE) AND SR 2 (TIDEWATER TRAIL) (ALSO US HIGHWAY 17 BUSINESS), IN NEW POST, GO NORTH ON SR 2 FOR 3.0 KM (1.85 MILES) TO ITS INTERSECTION WITH SR 608 (BENCHMARK ROAD). CONTINUE ON SR 2 FOR 0.40 KM (0.25 MILE) TO ITS INTERSECTION WITH ROUTE 2190 (GLENDA'S WAY) AND THE STATION ON THE RIGHT, JUST PAST THE INTERSECTION.

THE STATION IS A STANDARD SPOTSYLVANIA COUNTY, VA ALUMINUM SURVEY DISK SET INTO A Poured IN PLACE CONCRETE MONUMENT 10 INCHES IN DIAMETER, FLUSH WITH GROUND SURFACE AND STAMPED TIDEWATER AZ 2006.

SKETCH:



1. 60' NW OF A "SR 2190" SIGN
2. 52' NW OF A TELEPHONE PEDESTAL
3. 43' S OF A UP "QE82"
4. 35' SW OF A BRICK PILLAR
5. 11' NE OF THE EP OF SR 2
6. 10' E OF A CONCRETE CULVERT
7. 7.5' E OF A REFLECTOR POST
8. 1.0' SW OF A WITNESS POST

DRAWN BY: BCL

CHECKED BY: DAR

DATE: 01/2007

APPROX. SCALE: 1" = 50'

**GEOMETRICS**  
GPS, INC.