

**SPOTSYLVANIA COUNTY VIRGINIA
2003-2004 CONTROL SURVEY**

JN 103-060

HORIZONTAL DATUM: NAD 83(2007) (REVISED 8-08)
 VERTICAL DATUM: NAVD 88
 COORDINATE SYSTEM: VIRGINIA STATE PLANE, NORTH ZONE
 UNITS: U.S. SURVEY FOOT

HORIZONTAL ORDER: FIRST
 VERTICAL ORDER: FIRST

COUNTY	NAME OF STATION	YEAR
SPOTSYLVANIA	THORN AZ 2	2004
N: 6730159.36	LAT: 38° 07' 30.84246" N	COMBINED FACTOR: 0.99998505
E: 11764231.87	LONG: 77° 31' 19.44282" W	⊖ ANGLE: 0° 36' 37"
ELEVATION: 243.27' (ESTABLISHED BY LEVELING)		
DISTANCES AND DIRECTIONS TO AZIMUTH MARKS		
STATION	GROUND DISTANCE	TRUE AZIMUTH
THORN	1309.55'	6° 37' 14"

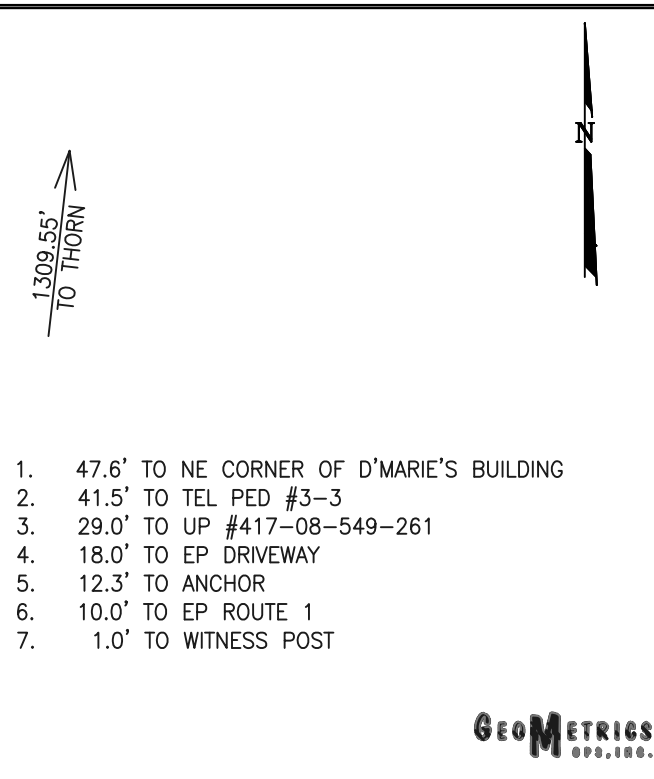
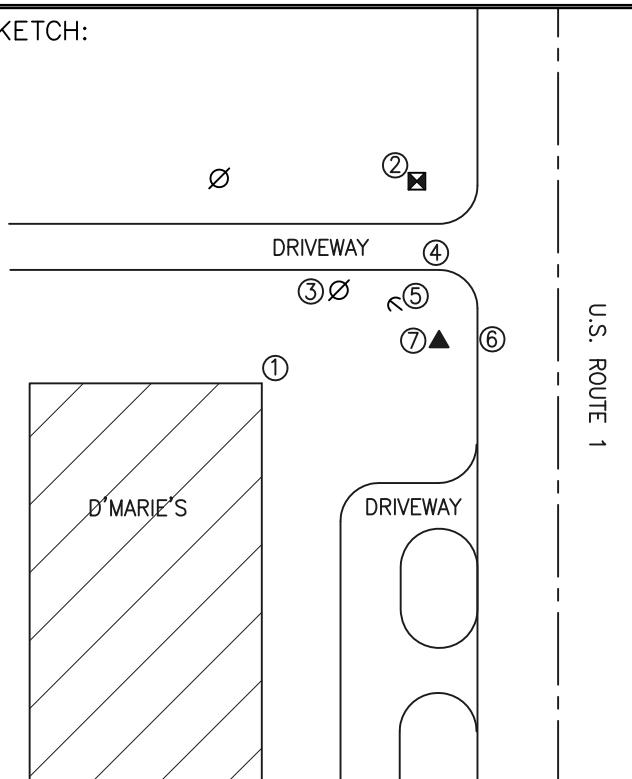
THE STATION IS LOCATED IN SPOTSYLVANIA COUNTY, VIRGINIA, APPROXIMATELY 20.3 KM (12.6 MILES) SOUTH OF THE CITY OF FREDERICKSBURG AND 10.0 KM (6.2 MILES) SOUTHEAST OF THE SPOTSYLVANIA COURTHOUSE.

TO REACH THE STATION FROM THE INTERSECTION OF US HIGHWAY 1 (JEFFERSON DAVIS HIGHWAY) AND STATE ROUTE 606 (MORRIS ROAD/MUDD TAVERN ROAD) GO SOUTH ON US HIGHWAY 1 FOR 1.0 KM (0.6 MILE) TO THE STATION ON THE RIGHT.

STATION THORN AZ IS INTERVISIBLE WITH STATION THORN.

THE STATION IS A 3 1/2 INCH SPOTSYLVANIA COUNTY, VA ALUMINUM SURVEY DISK SET INTO A POURED IN PLACE CONCRETE MONUMENT 10 INCHES IN DIAMETER, RECESSED ONE INCH BELOW THE GROUND SURFACE AND STAMPED THORN AZ 2 2004.

SKETCH:



1. 47.6' TO NE CORNER OF D'MARIE'S BUILDING
2. 41.5' TO TEL PED #3-3
3. 29.0' TO UP #417-08-549-261
4. 18.0' TO EP DRIVEWAY
5. 12.3' TO ANCHOR
6. 10.0' TO EP ROUTE 1
7. 1.0' TO WITNESS POST

GEOMETRICS
OPS, INC.