

**SPOTSYLVANIA COUNTY VIRGINIA  
2006 CONTROL SURVEY (RE-ADJUSTED 2008)**

JN 105-138

HORIZONTAL DATUM: NAD 83(2007)  
VERTICAL DATUM: NAVD 88  
COORDINATE SYSTEM: VIRGINIA STATE PLANE, NORTH ZONE  
UNITS: U.S. SURVEY FOOT

HORIZONTAL ORDER: FIRST  
VERTICAL ORDER: THIRD

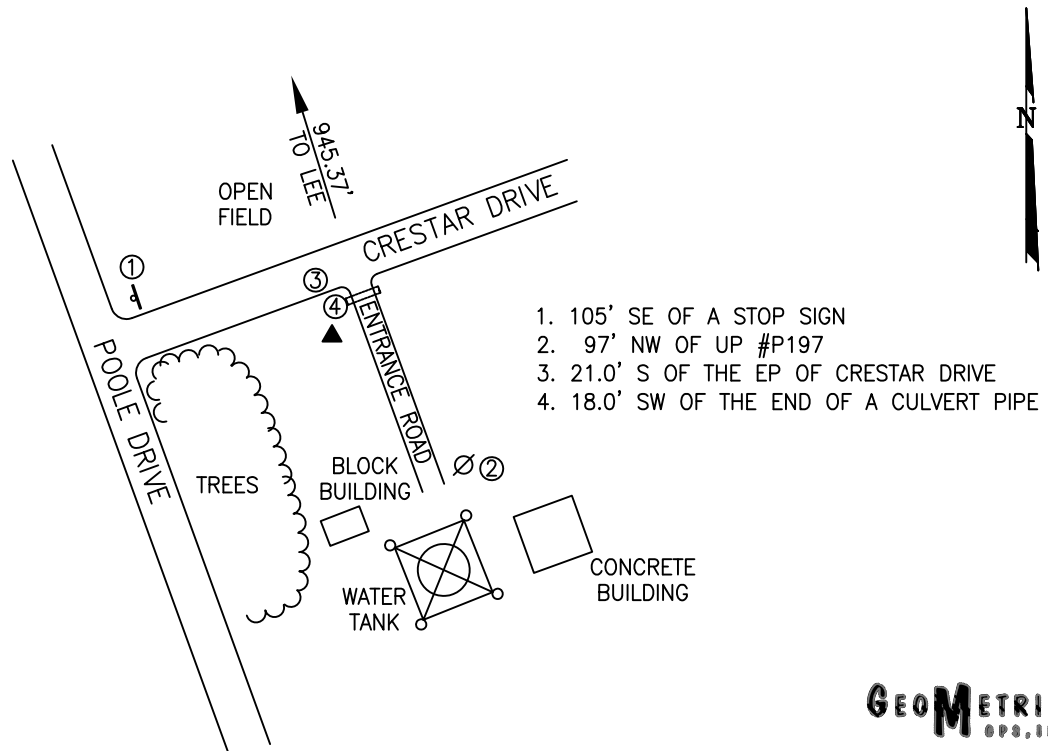
COUNTY	NAME OF STATION	YEAR
SPOTSYLVANIA	TANK	2006
N: 6757174.53	LAT: 38° 11' 59.90611" N	COMBINED FACTOR: 0.99997477
E: 11744409.97	LONG: 077° 35' 24.13872" W	⊖ ANGLE: 0° 34' 04.5"
ELEVATION: 303.41' (ESTABLISHED BY GPS)		
DISTANCES AND DIRECTIONS TO AZIMUTH MARKS		
STATION	GROUND DISTANCE	TRUE AZIMUTH
LEE	945.37'	342°37'31"

THE STATION IS LOCATED ABOUT 9.0 KM (5.6 MILES) SOUTH OF CHANCELLOR, AND 0.3 KM (0.2 MILE) WEST OF THE SPOTSYLVANIA COURTHOUSE.

TO REACH THE STATION FROM THE INTERSECTION OF SR 613 (BROCK ROAD) AND SR 208 (COURTHOUSE ROAD) AT THE SPOTSYLVANIA COURTHOUSE, GO SOUTHEAST ON SR 613 FOR ABOUT 80 YARDS TO ITS INTERSECTION WITH CRESTAR DRIVE. TURN LEFT AND GO SOUTHWEST ON CRESTAR DRIVE FOR 0.2 KM (0.1 MILE) TO THE STATION ON THE LEFT IN FRONT OF THE CRESTAR BANK.

THE STATION IS A STANDARD SPOTSYLVANIA COUNTY, VA ALUMINUM SURVEY DISK SET INTO A POURED IN PLACE CONCRETE MONUMENT 10 INCHES IN DIAMETER, FLUSH WITH THE GROUND SURFACE AND STAMPED TANK 2006.

SKETCH:



**GEOMETRICS**  
S.P.S., INC.

DRAWN BY: BCL

CHECKED BY: DAR

DATE: 06/2006

APPROX. SCALE: 1" = 100'