

SPOTSYLVANIA COUNTY VIRGINIA 2005 CONTROL SURVEY

JN 104-085

HORIZONTAL DATUM: NAD 83(2007) (REVISED 8-08)
 VERTICAL DATUM: NAVD 88
 COORDINATE SYSTEM: VIRGINIA STATE PLANE, NORTH ZONE
 UNITS: U.S. SURVEY FOOT

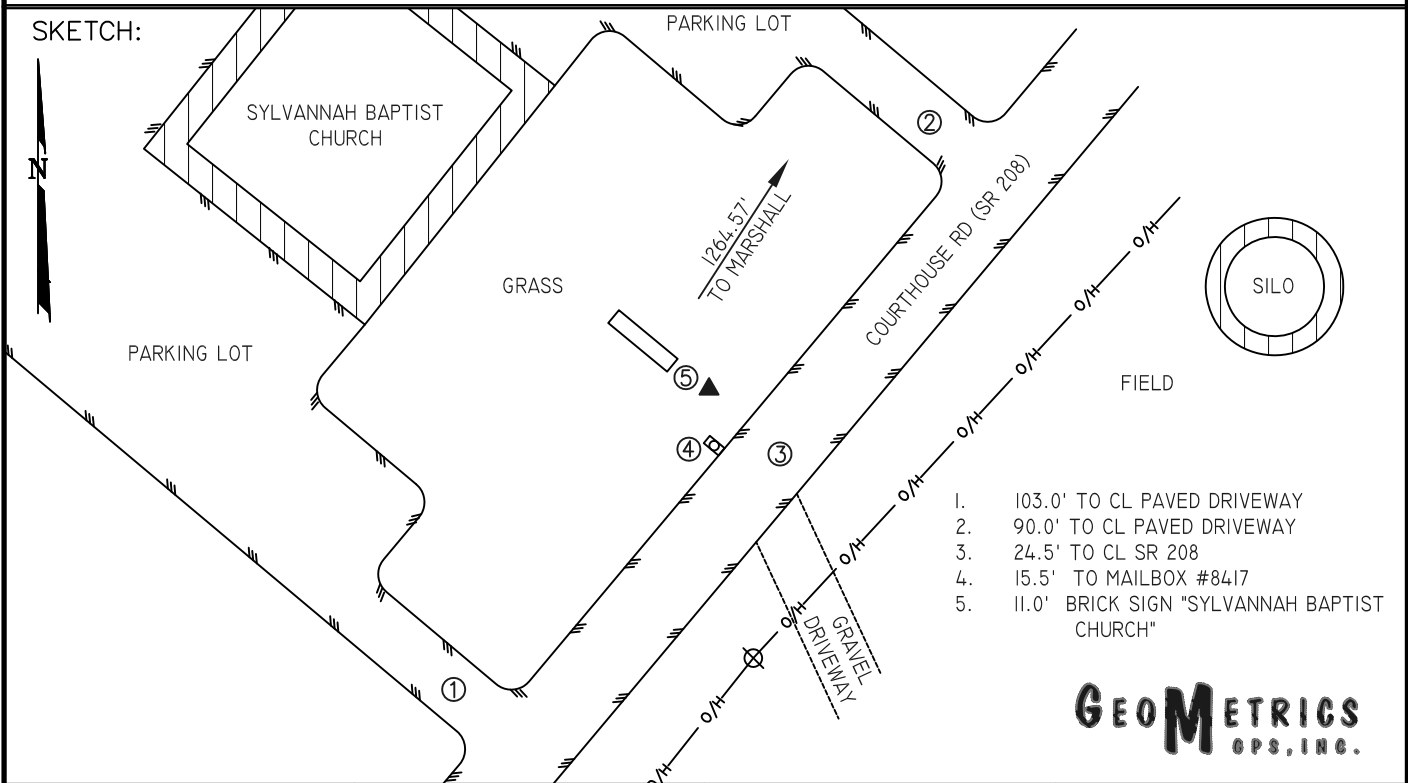
HORIZONTAL ORDER: FIRST
 VERTICAL ORDER: THIRD

COUNTY	NAME OF STATION	YEAR
SPOTSYLVANIA	SYLVANNAH	2005
N: 6752838.76	LAT: 38° 11' 17.01716" N	COMBINED FACTOR: 0.99997630
E: 11744707.07	LONG: 077° 35' 20.95598" W	⊖ ANGLE: 0° 34' 07"
ELEVATION: 297.78' (ESTABLISHED BY GPS)		
DISTANCES AND DIRECTIONS TO AZIMUTH MARKS		
STATION	GROUND DISTANCE	TRUE AZIMUTH
MARSHALL	1264.57	33°07'45"

THE STATION IS LOCATED IN SPOTSYLVANIA COUNTY, VIRGINIA, APPROXIMATELY 8.0 KM (5.0 MILES) NORTHWEST OF THORNBURG, AND 1.6 KM (1.0 MILE) SOUTH OF THE SPOTSYLVANIA COUNTY COURTHOUSE.

TO REACH THE STATION FROM THE INTERSECTION OF SR 208 (COURTHOUSE ROAD) AND SR 613 (BROCK ROAD) AT THE SPOTSYLVANIA COURTHOUSE, GO SOUTH ON SR 208 FOR 1.6 KM (1.0 MILE) TO THE STATION ON THE RIGHT AT THE SYLVANNAH BAPTIST CHURCH.

THE STATION IS A SPOTSYLVANIA COUNTY, VA ALUMINUM SURVEY DISK SET INTO A POURED IN PLACE CONCRETE MONUMENT 10 INCHES IN DIAMETER, FLUSH WITH THE GROUND SURFACE AND STAMPED SYLVANNAH 2005. STATION SYLVANNAH IS INTERVISIBLE WITH STATION MARSHALL.



1. 103.0' TO CL PAVED DRIVEWAY
2. 90.0' TO CL PAVED DRIVEWAY
3. 24.5' TO CL SR 208
4. 15.5' TO MAILBOX #8417
5. 11.0' BRICK SIGN "SYLVANNAH BAPTIST CHURCH"

GEOMETRICS
GPS, INC.