

SPOTSYLVANIA COUNTY, VIRGINIA
 E911 GPS SURVEY REVISED 10/2008

W.O. 95007

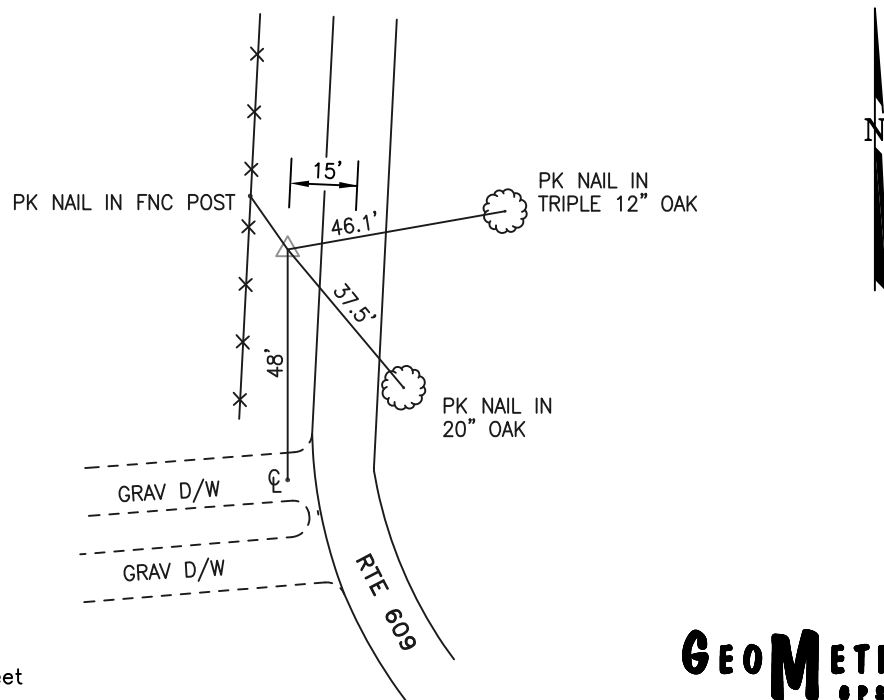
MAP PROJECTION: LAMBERT ORDER OF SURVEY: FIRST
 NAD 83(2007) * VIRGINIA STATE PLANE COORDINATE SYSTEM * NORTH ZONE

COUNTY		NAME OF STATION		YEAR
SPOTSYLVANIA		SUMMIT		1995
N: 6757637.01	E: 11793502.24	LAT.: 38°11'59.21577"N	LONG.: 77°25'09.11865"W	
GRID FACTOR: 0.99997480	SEA LEVEL FACTOR: 0.99999456		ϕ ANGLE: +0°40'28.37"	
ESTABLISHED BY: GeoMetrics GPS, INC.	YEAR 1995	DISTANCES AND DIRECTIONS TO REFERENCE MARKS AND PROMINENT OBJECTS OBSERVED AT STATION		
		OBJECT	DISTANCE-FT.	MAG. AZIMUTH
VERTICAL DATUM NAVD 88				
ELEVATION (FT.) 219.99				
RECOVERED: OCT 2000				

DESCRIPTION OF STATION:

The station is a Spotsylvania County survey disk set in concrete stamped SUMMIT 1995 located in Spotsylvania County, Virginia, approximately 2.4 miles southwest of New Post. To reach the station from the intersection of Route 17 Bypass (Mills Drive) and Route 2 (Tidewater Trail/Sandy Lane Drive) proceed west along Route 17 Bypass (Mills Drive) 1.2 miles to its intersection with Route 609 (Jim Morris Road/Thornton Rolling Road). Turn left and proceed south along Route 609 (Thornton Rolling Road) 1.7 miles to the station on the right. Witness post set N57°W at 11.0 feet.

SKETCH OF STATION:



THIS SURVEY DATA PREPARED
 USING 1 meter = 3.280833 feet

PREPARED BY: EJP	DATE: AUG '95
CHECKED BY: DAR	DATE: AUG '95

NOTE:
 IN 2008 THE COORDINATES WERE CONVERTED TO
 NAD83(2007) BY APPLYING A COMPUTED SHIFT

GEOMETRICS
 GPS, INC.

236 CAMBRIDGE ROAD
 FREDERICKSBURG, VIRGINIA
 (540) 372-3499