

**SPOTSYLVANIA COUNTY VIRGINIA
2003-2004 CONTROL SURVEY**

JN 103-060

HORIZONTAL DATUM: NAD 83(2007) (REVISED 8-08)
 VERTICAL DATUM: NAVD 88
 COORDINATE SYSTEM: VIRGINIA STATE PLANE, NORTH ZONE
 UNITS: U.S. SURVEY FOOT

HORIZONTAL ORDER: FIRST
 VERTICAL ORDER: THIRD

COUNTY	NAME OF STATION	YEAR
SPOTSYLVANIA	SUMCROS	2004
N: 6757380.97	LAT: 38° 11' 57.56181" N	COMBINED FACTOR: 0.99997485
E: 11785873.40	LONG: 77° 26' 44.71788" W	⊖ ANGLE: 0° 39' 29"
ELEVATION: 242.28' (ESTABLISHED BY GPS)		
DISTANCES AND DIRECTIONS TO AZIMUTH MARKS		
STATION	GROUND DISTANCE	TRUE AZIMUTH
SUMCROS AZ	991.74'	306° 23' 23"

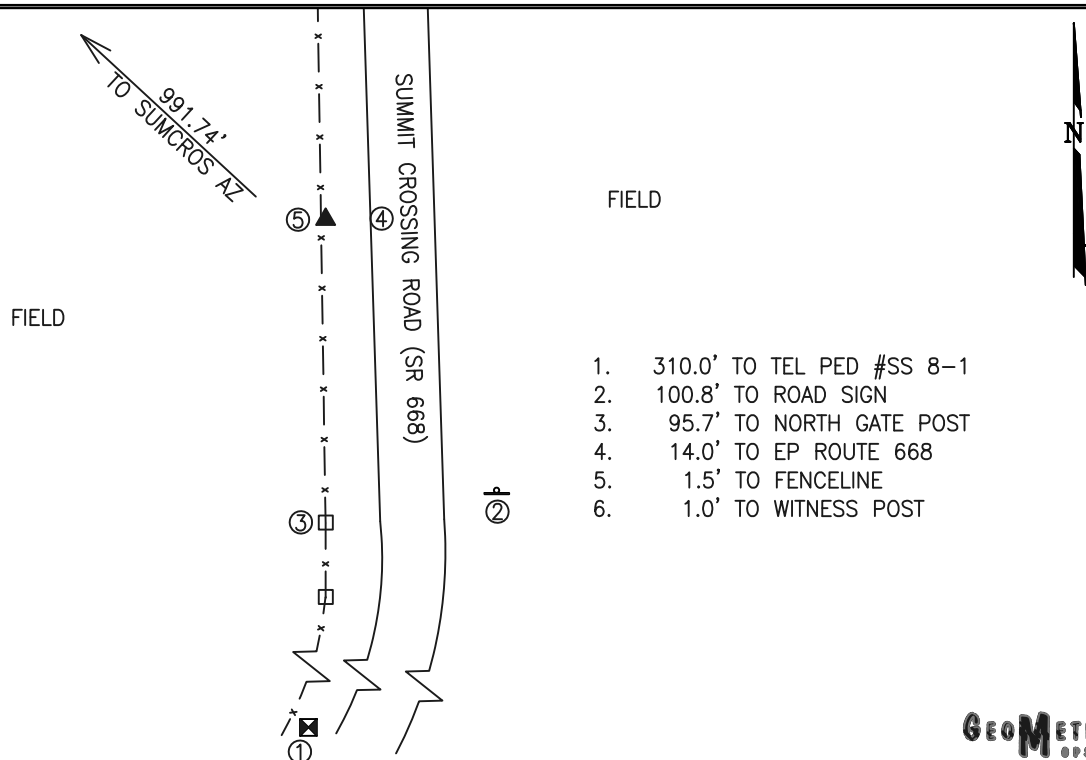
THE STATION IS LOCATED IN SPOTSYLVANIA COUNTY, VIRGINIA, APPROXIMATELY 12.6 KM (7.8 MILES) EAST OF THE SPOTSYLVANIA COURTHOUSE AND 11.4 KM (7.1 MILES) SOUTH OF THE CITY OF FREDERICKSBURG.

TO REACH THE STATION FROM THE INTERSECTION OF US HIGHWAY 17 SOUTH AND STATE ROUTE 608 (MASSAPONAX CHURCH ROAD) GO SOUTHWESTERLY ON STATE ROUTE 608 FOR 3.2 KM (2.0 MILES) TO ITS INTERSECTION WITH STATE ROUTE 668 (SUMMIT CROSSING ROAD). TURN LEFT AND GO EAST ON SUMMIT CROSSING ROAD FOR 2.3 KM (1.4 MILES) TO THE STATION ON THE RIGHT.

STATION SUMCROS IS INTERVISIBLE WITH STATION SUMCROS AZ.

THE STATION IS A 3 1/2 INCH SPOTSYLVANIA COUNTY, VA ALUMINUM SURVEY DISK SET INTO A POURED IN PLACE CONCRETE MONUMENT 10 INCHES IN DIAMETER, FLUSH WITH THE GROUND SURFACE AND STAMPED SUMCROS 2004.

SKETCH:



GEOMETRICS
GPS, INC.