

**SPOTSYLVANIA COUNTY VIRGINIA
2003 CONTROL SURVEY**

JN 103-009

HORIZONTAL DATUM: NAD 83(2007) (REVISED 8-08)
 VERTICAL DATUM: NAVD 88
 COORDINATE SYSTEM: VIRGINIA STATE PLANE, NORTH ZONE
 UNITS: U.S. SURVEY FOOT

HORIZONTAL ORDER: FIRST
 VERTICAL ORDER: THIRD

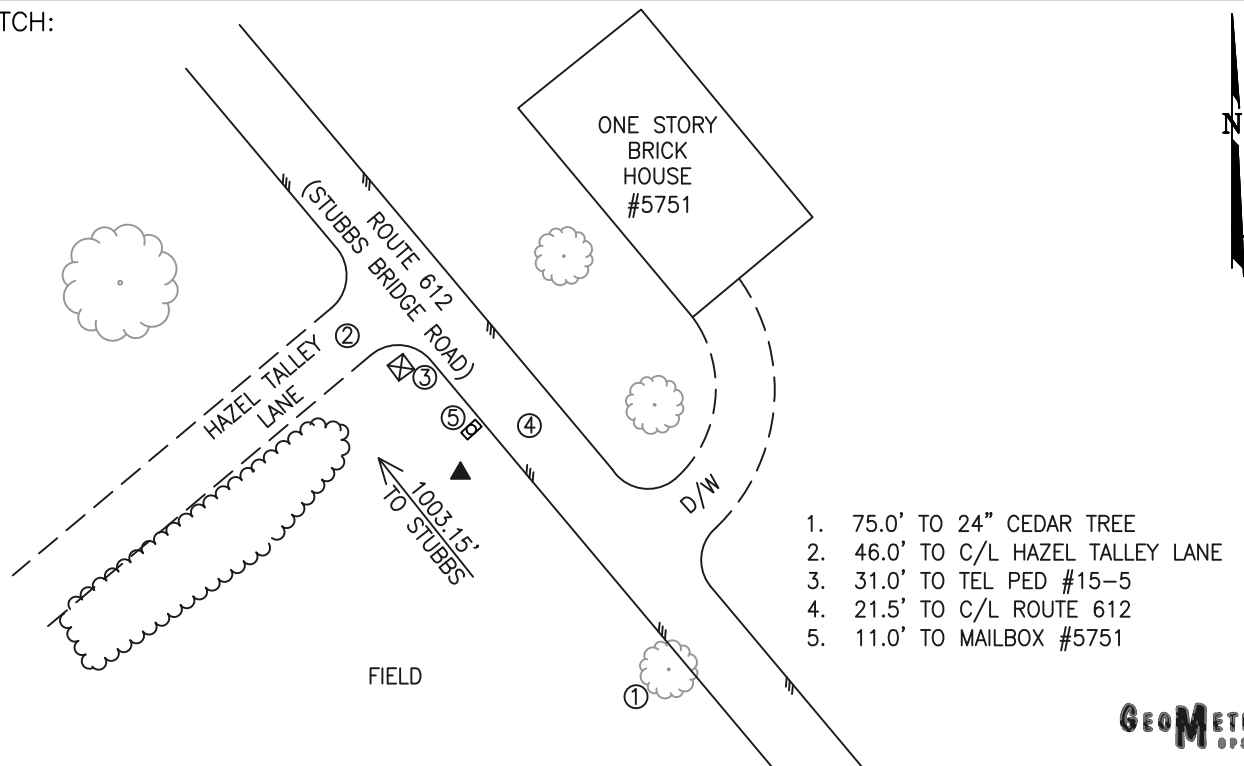
COUNTY	NAME OF STATION	YEAR
SPOTSYLVANIA	STUBBS AZ	2003
N: 6727535.63	LAT: 38° 07' 13.53868" N	COMBINED FACTOR: 0.99997407
E: 11664615.20	LONG: 77° 52' 06.28481" W	∅ ANGLE: 0° 23' 39"
ELEVATION: 351.17' (ESTABLISHED BY GPS)		
DISTANCES AND DIRECTIONS TO AZIMUTH MARKS		
STATION	GROUND DISTANCE	TRUE AZIMUTH
STUBBS	1003.15'	321° 28' 54"

THE STATION IS LOCATED IN SOUTHWESTERN SPOTSYLVANIA COUNTY, VIRGINIA, ABOUT 16 MILES SOUTHWEST OF THE SPOTSYLVANIA COUNTY COURTHOUSE AND ACROSS THE STREET FROM A ONE STORY BRICK HOUSE NUMBER 5751 STUBBS BRIDGE ROAD.

TO REACH THE STATION FROM THE INTERSECTION OF US HIGHWAY 522 (ZACHARY TAYLOR ROAD) AND STATE ROUTE 208 (NEW BRIDGE ROAD) IN LOUISA COUNTY, GO NORTHWESTERLY ON US HIGHWAY 522 FOR 1.6 KM (1.0 MILE) TO AN INTERSECTION. TURN RIGHT AND GO NORTHEASTERLY ON STATE ROUTE 719 (DAYS BRIDGE ROAD) FOR 3.7 KM (2.3 MILES) TO AN INTERSECTION. TURN RIGHT AND GO EAST ON STATE ROUTE 612 (STUBBS BRIDGE ROAD) FOR 0.3 KM (0.2 MILE) TO THE STATION ON THE RIGHT.

STUBBS AZ IS INTERVISIBLE WITH STATION STUBBS. THE STATION IS A 3-1/2 INCH SPOTSYLVANIA COUNTY, VA, ALUMINUM SURVEY DISK SET INTO A POURED IN PLACE CONCRETE MONUMENT 8 INCHES IN DIAMETER FLUSH WITH THE GROUND SURFACE AND STAMPED STUBBS AZ 2003.

SKETCH:



1. 75.0' TO 24" CEDAR TREE
2. 46.0' TO C/L HAZEL TALLEY LANE
3. 31.0' TO TEL PED #15-5
4. 21.5' TO C/L ROUTE 612
5. 11.0' TO MAILBOX #5751

GEOMETRICS
S.P.S., INC.

DRAWN BY: BCL

CHECKED BY: LLR

DATE: 06/2003

APPROX. SCALE: 1" = 50'