

SPOTSYLVANIA COUNTY VIRGINIA 2002 CONTROL SURVEY

JN 102-040

HORIZONTAL DATUM: NAD 83(2007) (REVISED 8-08)
 VERTICAL DATUM: NAVD 88
 COORDINATE SYSTEM: VIRGINIA STATE PLANE, NORTH ZONE
 UNITS: U.S. SURVEY FOOT

HORIZONTAL ORDER: FIRST
 VERTICAL ORDER: THIRD

COUNTY	NAME OF STATION	YEAR
SPOTSYLVANIA	SOUTHPOINT AZ	2002
N: 6771151.73	LAT: 38° 14' 15.43863" N	COMBINED FACTOR: 0.99996813
E: 11770024.67	LONG: 77° 30' 01.36784" W	⊖ ANGLE: 0° 37' 26.0"
ELEVATION: 150.49 (ESTABLISHED BY GPS)		

DISTANCES AND DIRECTIONS TO AZIMUTH MARKS		
STATION	GROUND DISTANCE	TRUE AZIMUTH
SOUTHPOINT	1867.10'	205°08'46"

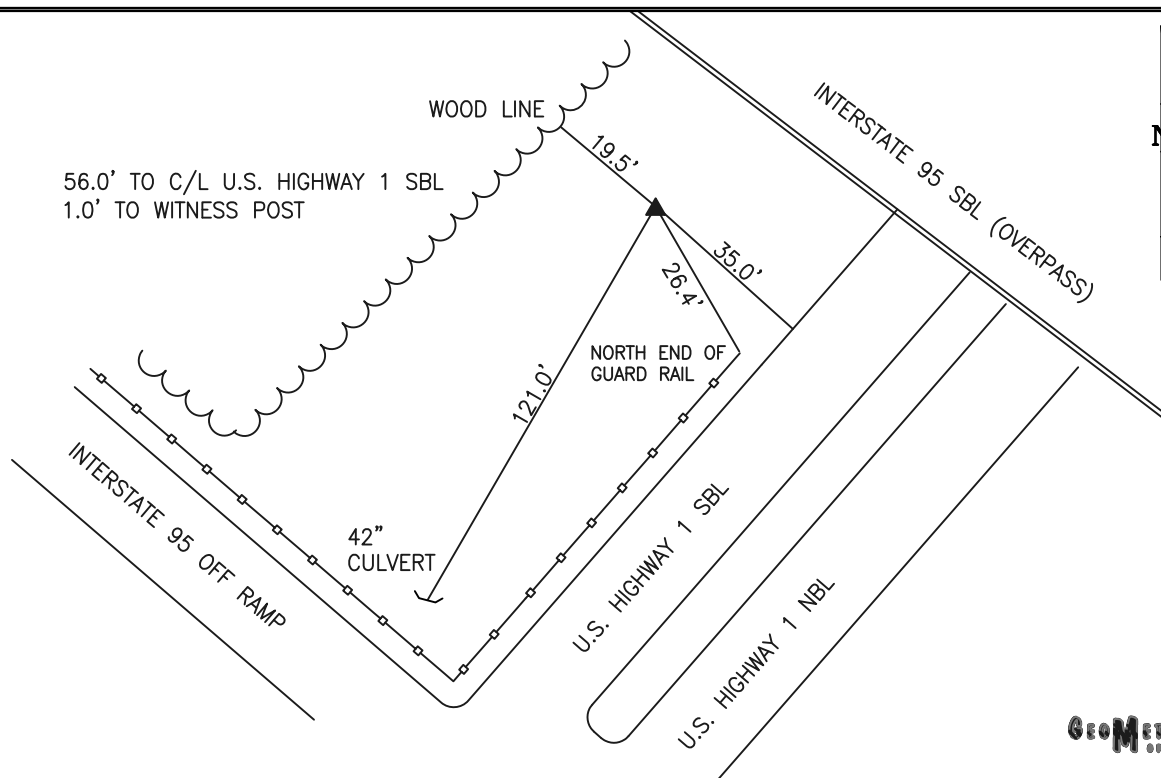
THE STATION IS LOCATED IN SPOTSYLVANIA COUNTY, VIRGINIA AT THE INTERSECTION OF US HIGHWAY 1 (JEFFERSON DAVIS HIGHWAY) AND INTERSTATE 95 AT MASSAPONAX.

TO REACH THE STATION FROM THE INTERSECTION OF US HIGHWAY 1 (JEFFERSON DAVIS HIGHWAY) AND US HIGHWAY 17 (MILLS DRIVE) IN MASSAPONAX PROCEED NORTH ALONG US HIGHWAY 1 (JEFFERSON DAVIS HIGHWAY) A DISTANCE OF APPROXIMATELY 0.6 MILE TO ITS INTERSECTION WITH THE SOUTHBOUND OFF RAMP TO INTERSTATE 95 AND THE STATION ON THE LEFT IN THE NORTHWEST CORNER OF THE INTERSECTION.

THE STATION IS A 3 1/2 INCH SPOTSYLVANIA COUNTY, VA ALUMINUM SURVEY DISK SET IN A POURED IN PLACE CONCRETE MONUMENT FLUSH WITH THE GROUND SURFACE AND STAMPED SOUTHPOINT AZ 2002.

THE STATION IS INTERVISIBLE WITH STATION SOUTHPOINT 2002.

SKETCH:



GEOMETRICS
INC., LLC.

DRAWN BY: KNT

CHECKED BY: CEN

DATE: 08/2002

APPROX. SCALE: 1" = 30'