

**SPOTSYLVANIA COUNTY VIRGINIA
2006 CONTROL SURVEY (RE-ADJUSTED 2008)**

JN 105-138

HORIZONTAL DATUM: NAD 83(2007)
 VERTICAL DATUM: NAVD 88
 COORDINATE SYSTEM: VIRGINIA STATE PLANE, NORTH ZONE
 UNITS: U.S. SURVEY FOOT

HORIZONTAL ORDER: FIRST
 VERTICAL ORDER: THIRD

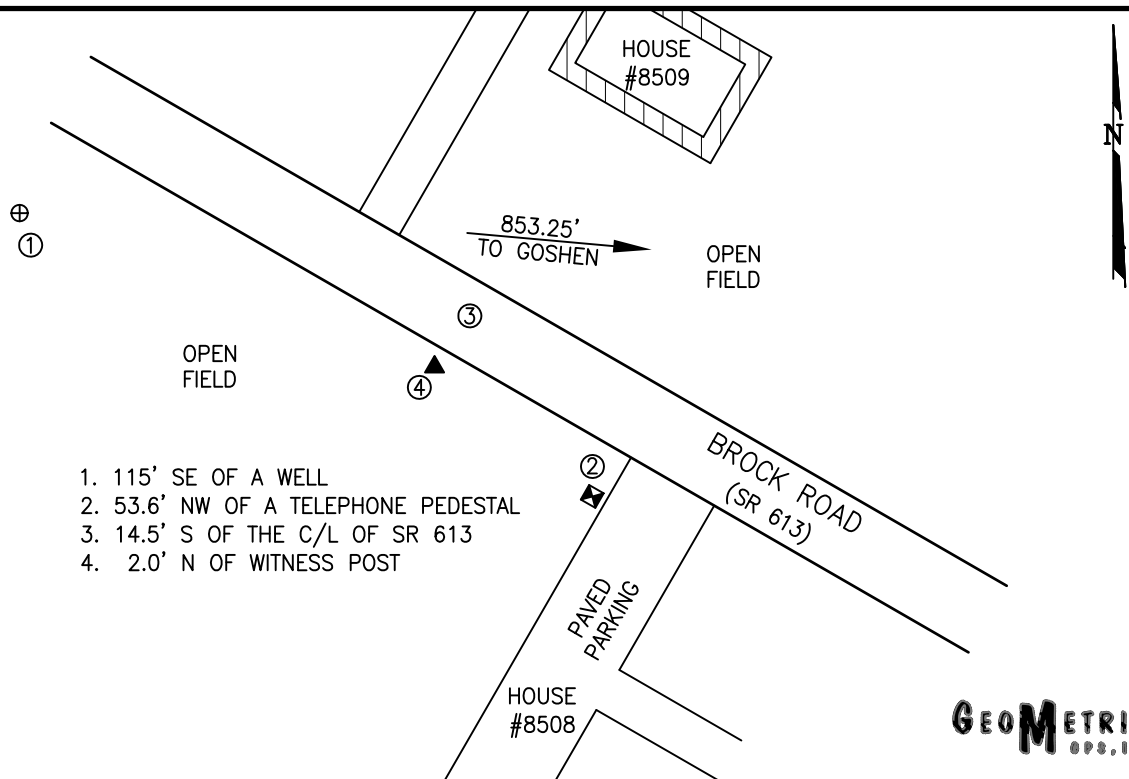
COUNTY	NAME OF STATION	YEAR
SPOTSYLVANIA	S006 RM	2006
N: 6766710.61	LAT: 38° 13' 35.26819" N	COMBINED FACTOR: 0.99997153
E: 11732974.57	LONG: 077° 37' 46.25438" W	⊖ ANGLE: 0° 32' 35.8"
ELEVATION: 315.26' (ESTABLISHED BY GPS)		
DISTANCES AND DIRECTIONS TO AZIMUTH MARKS		
STATION	GROUND DISTANCE	TRUE AZIMUTH
GOSHEN	853.25'	95°37'25"

THE STATION IS LOCATED ABOUT 6.9 KM (4.3 MILES) SOUTHWEST OF CHANCELLOR, AND 4.3 KM (2.7 MILES) NORTHWEST OF SPOTSYLVANIA.

TO REACH THE STATION FROM THE INTERSECTION OF SR 613 (BROCK ROAD) AND SR 208 (COURTHOUSE ROAD) AT THE SPOTSYLVANIA COURTHOUSE, GO NORTH ON SR 613 FOR 4.7 KM (2.9 MILES) TO ITS INTERSECTION WITH SR 627 (GORDON ROAD). CONTINUE NORTH ON SR 613 FOR 300 METERS (1000 FEET) TO THE STATION ON THE LEFT.

THE STATION IS A BRASS SURVEY DISK SET INTO A POURED IN PLACE CONCRETE MONUMENT 10 INCHES IN DIAMETER, FLUSH WITH THE GROUND SURFACE AND STAMPED AZ S006

SKETCH:



1. 115' SE OF A WELL
2. 53.6' NW OF A TELEPHONE PEDESTAL
3. 14.5' S OF THE C/L OF SR 613
4. 2.0' N OF WITNESS POST

GEOMETRICS
S.P.S., INC.

DRAWN BY: BCL

CHECKED BY: DAR

DATE: 06/2006

APPROX. SCALE: 1" = 50'