

SPOTSYLVANIA COUNTY VIRGINIA 2005 CONTROL SURVEY

JN 104-085

HORIZONTAL DATUM: NAD 83(2007) (REVISED 8-08)
 VERTICAL DATUM: NAVD 88
 COORDINATE SYSTEM: VIRGINIA STATE PLANE, NORTH ZONE
 UNITS: U.S. SURVEY FOOT

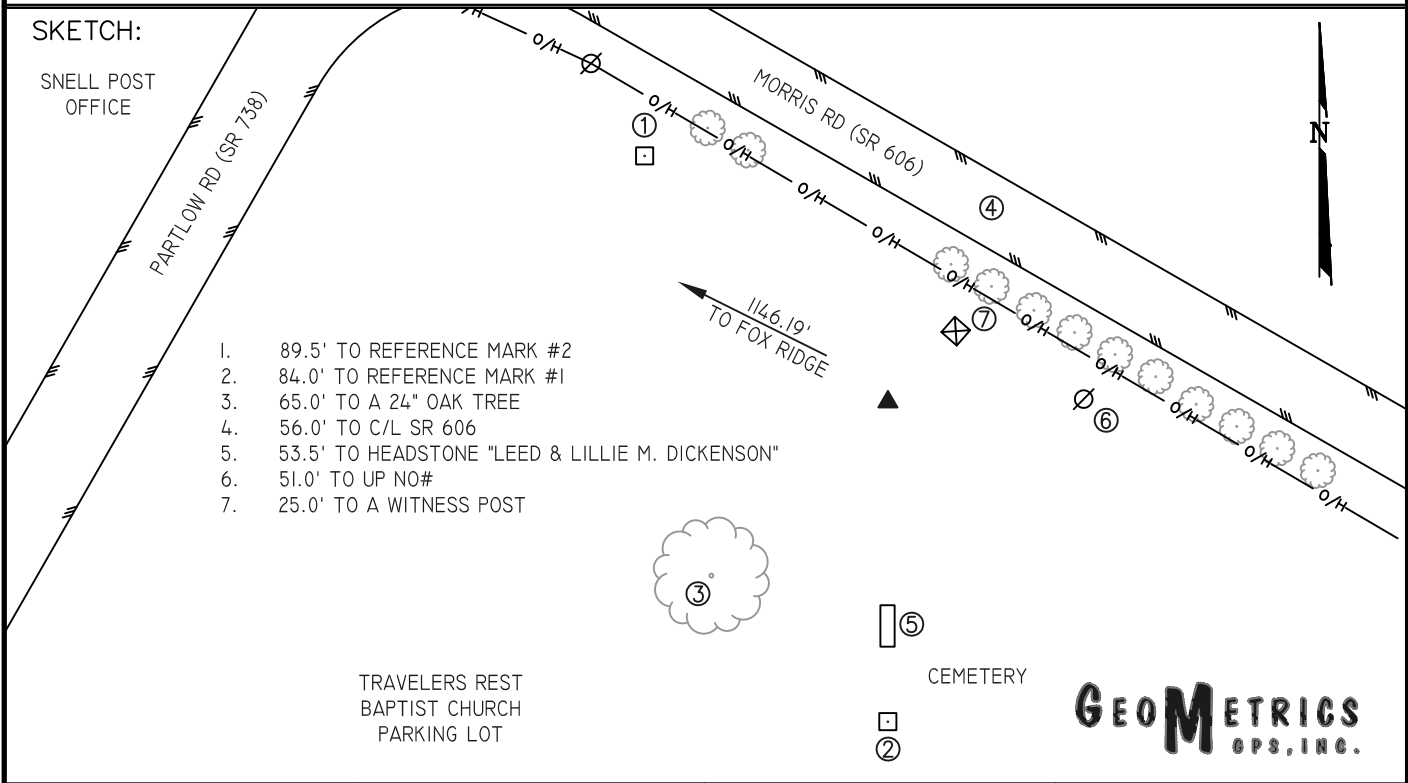
HORIZONTAL ORDER: FIRST
 VERTICAL ORDER: THIRD

COUNTY	NAME OF STATION	YEAR
SPOTSYLVANIA	SNELL	1941
N: 6738018.65	LAT: 38° 08' 50.81922" N	COMBINED FACTOR: 0.99998182
E: 11741612.67	LONG: 077° 36' 01.53113" W	⊖ ANGLE: 0° 33' 41"
ELEVATION: 291.95' (ESTABLISHED BY GPS)		
DISTANCES AND DIRECTIONS TO AZIMUTH MARKS		
STATION	GROUND DISTANCE	TRUE AZIMUTH
FOX RIDGE	1146.19	298°21'00"

THE STATION IS LOCATED ABOUT 24 KM (14.90 MILES) SOUTH SOUTHWEST OF FREDERICKSBURG, 7.6 KM (4.70 MILES) WEST OF THORNBURG AT THE INTERSECTION OF SR 208 (COURTHOUSE ROAD) AND SR 606 (MORRIS ROAD) IN THE TOWN OF SNELL ON PROPERTY OF THE TRAVELERS REST BAPTIST CHURCH.

TO REACH THE STATION FROM THE INTERSECTION OF SR 606 AND INTERSTATE 95 AT EXIT 118, GO WEST ON SR 606 FOR 0.85 KM (0.50 MILE) TO US HIGHWAY 1 IN THORNBURG. CONTINUE WEST ON SR 606 FOR 7.52 KM (4.65 MILES) TO THE INTERSECTION WITH SR 208 AND SR 738 (PARTLOW ROAD) IN THE TOWN OF SNELL. TURN LEFT ON SR 738 (PARTLOW ROAD) AND GO SOUTH ON SR 738 FOR ABOUT 91 METERS (300 FEET) TO THE ENTRANCE TO THE TRAVELERS REST BAPTIST CHURCH ON THE LEFT. TURN INTO THE CHURCH AND PROCEED TO THE LEFT TO THE CEMETERY AND THE STATION TO THE NORTH.

THE STATION IS A STANDARD CGS DISK STAMPED SNELL 1941, SET INTO THE TOP OF A SQUARE CONCRETE MONUMENT 50 CM IN DIAMETER, RECESSED 5 CM BELOW THE GROUND.



GEOMETRICS
GPS, INC.