

**SPOTSYLVANIA COUNTY VIRGINIA
2003 CONTROL SURVEY**

JN 103-009

HORIZONTAL DATUM: NAD 83(2007) (REVISED 8-08)
 VERTICAL DATUM: NAVD 88
 COORDINATE SYSTEM: VIRGINIA STATE PLANE, NORTH ZONE
 UNITS: U.S. SURVEY FOOT

HORIZONTAL ORDER: FIRST
 VERTICAL ORDER: THIRD

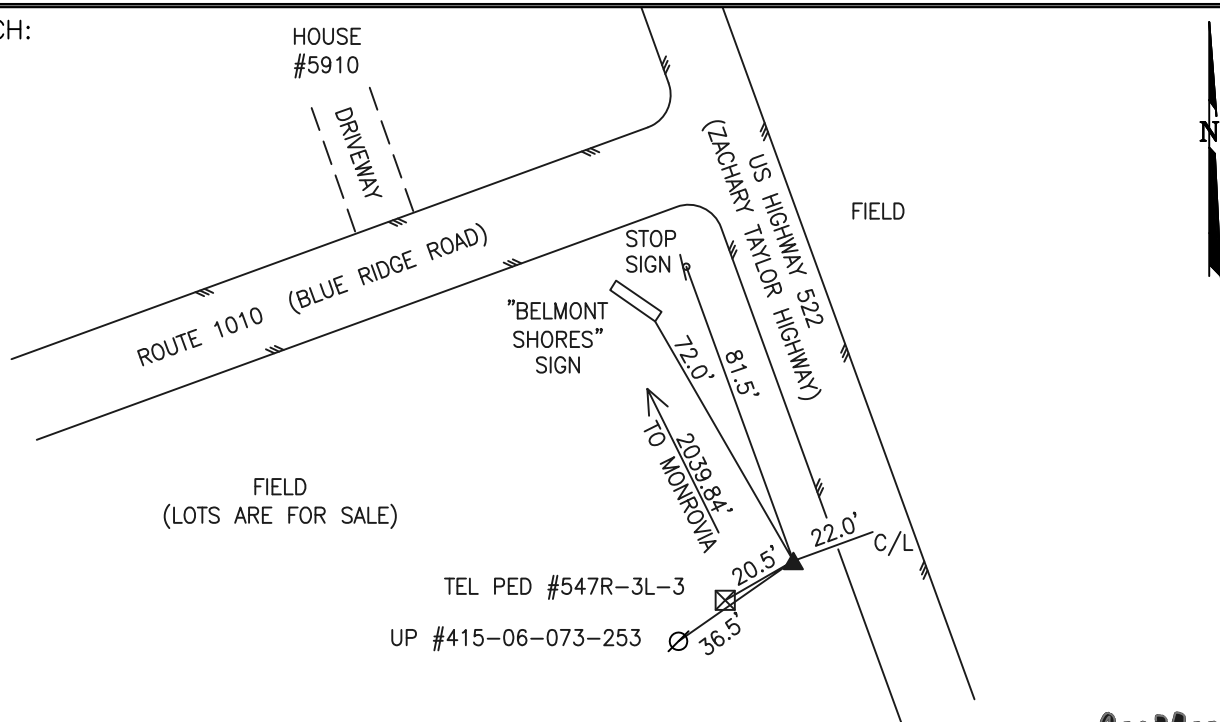
COUNTY	NAME OF STATION	YEAR
SPOTSYLVANIA	SHORES	2003
N: 6728870.64	LAT: 38° 07' 27.60140" N	COMBINED FACTOR: 0.99997402
E: 11651409.81	LONG: 77° 54' 51.42151" W	∅ ANGLE: 0° 21' 56"
ELEVATION: 339.87' (ESTABLISHED BY GPS)		
DISTANCES AND DIRECTIONS TO AZIMUTH MARKS		
STATION	GROUND DISTANCE	TRUE AZIMUTH
MONROVIA	2039.84'	334° 43' 40"

THE STATION IS LOCATED IN SOUTHWESTERN SPOTSYLVANIA COUNTY, VIRGINIA, ABOUT 19 MILES SOUTHWEST OF THE SPOTSYLVANIA COUNTY COURTHOUSE.

THE STATION IS IN THE SOUTHWEST CORNER OF THE INTERSECTION OF US HIGHWAY 522 (ZACHARY TAYLOR HIGHWAY) AND STATE ROUTE 1010 (BLUE RIDGE ROAD).

STATION SHORES IS INTERVISIBLE WITH STATION MONROVIA. THE STATION IS A 3-1/2 INCH SPOTSYLVANIA COUNTY, VA, ALUMINUM SURVEY DISK SET IN POURED INTO A PLACE CONCRETE MONUMENT 8 INCHES IN DIAMETER FLUSH WITH THE GROUND SURFACE AND STAMPED SHORES 2003.

SKETCH:



GEOMETRICS
OPS, INC.

DRAWN BY: BCL

CHECKED BY: LLR

DATE: 06/2003

APPROX. SCALE: 1" = 50'