

**SPOTSYLVANIA COUNTY VIRGINIA  
2007 GEODETIC CONTROL SURVEY**

JN 107-065

HORIZONTAL DATUM: NAD 83(2007)  
 VERTICAL DATUM: NAVD 88  
 COORDINATE SYSTEM: VIRGINIA STATE PLANE, NORTH ZONE  
 UNITS: U.S. SURVEY FOOT

HORIZONTAL ORDER: FIRST  
 VERTICAL ORDER: THIRD

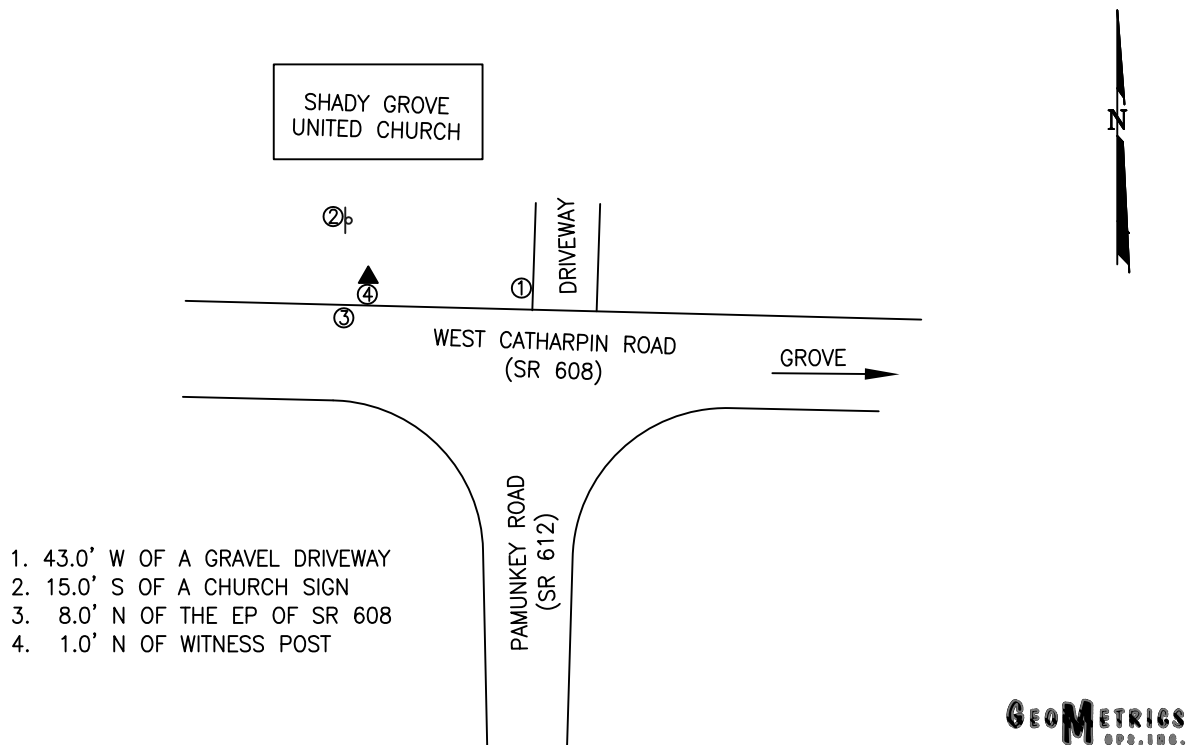
COUNTY	NAME OF STATION	YEAR
SPOTSYLVANIA	SHADY	2007
N: 6764317.30	LAT: 38° 13' 13.81877" N	COMBINED FACTOR: 0.99996027
E: 11708177.11	LONG: 77° 42' 57.25839" W	⊖ ANGLE: 0° 29' 22"
ELEVATION: 356.98' (ESTABLISHED BY GPS)		
DISTANCES AND DIRECTIONS TO AZIMUTH MARKS		
STATION	GROUND DISTANCE	TRUE AZIMUTH
GROVE	1534.54	71° 12' 35"

THE STATION IS LOCATED ABOUT 12.2 KM (7.6 MILES) SOUTHEAST OF LOCUST GROVE, AND 11.3 KM (7.0 MILES) WEST OF SPOTSYLVANIA.

TO REACH THE STATION FROM THE INTERSECTION OF SR 208 (COURTHOUSE ROAD) AND SR 613 (BROCK ROAD), AT THE SPOTSYLVANIA COURTHOUSE, GO NORTH ON SR 613 FOR 0.8 KM (0.5 MILE) TO ITS INTERSECTION WITH SR 608 (ROBERT E LEE DRIVE). TURN LEFT AND GO WEST ON SR 608 FOR 7.1 KM (4.4 MILES) TO ITS INTERSECTION WITH SR 649 (MILL POND ROAD). CONTINUE WEST ON SR 608 FOR 4.2 KM (2.6 MILES) TO ITS INTERSECTION WITH SR 608 (WEST CATHARPIN ROAD). TURN LEFT AND GO WEST ON SR 608 FOR 0.5 KM (0.3 MILE) TO ITS INTERSECTION WITH SR 612 (PAMUNKEY ROAD) AND THE STATION ON THE RIGHT IN FRONT OF THE SHADY GROVE UNITED METHODIST CHURCH.

THE STATION IS A STANDARD SPOTSYLVANIA COUNTY, VA ALUMINUM SURVEY DISK SET INTO A POURED IN PLACE CONCRETE MONUMENT 10 INCHES IN DIAMETER, FLUSH WITH GROUND SURFACE AND STAMPED SHADY 2007.

SKETCH:



1. 43.0' W OF A GRAVEL DRIVEWAY
2. 15.0' S OF A CHURCH SIGN
3. 8.0' N OF THE EP OF SR 608
4. 1.0' N OF WITNESS POST

**GEOMETRICS**  
GPS, INC.

DRAWN BY: KLS

CHECKED BY: DAR

DATE: 06/2008

APPROX. SCALE: 1" = 50'