

**SPOTSYLVANIA COUNTY VIRGINIA  
2006-2007 CONTROL SURVEY (RE-ADJUSTED 2008)**

JN 106-134

HORIZONTAL DATUM: NAD 83(2007)  
 VERTICAL DATUM: NAVD 88  
 COORDINATE SYSTEM: VIRGINIA STATE PLANE, NORTH ZONE  
 UNITS: U.S. SURVEY FOOT

HORIZONTAL ORDER: FIRST  
 VERTICAL ORDER: THIRD

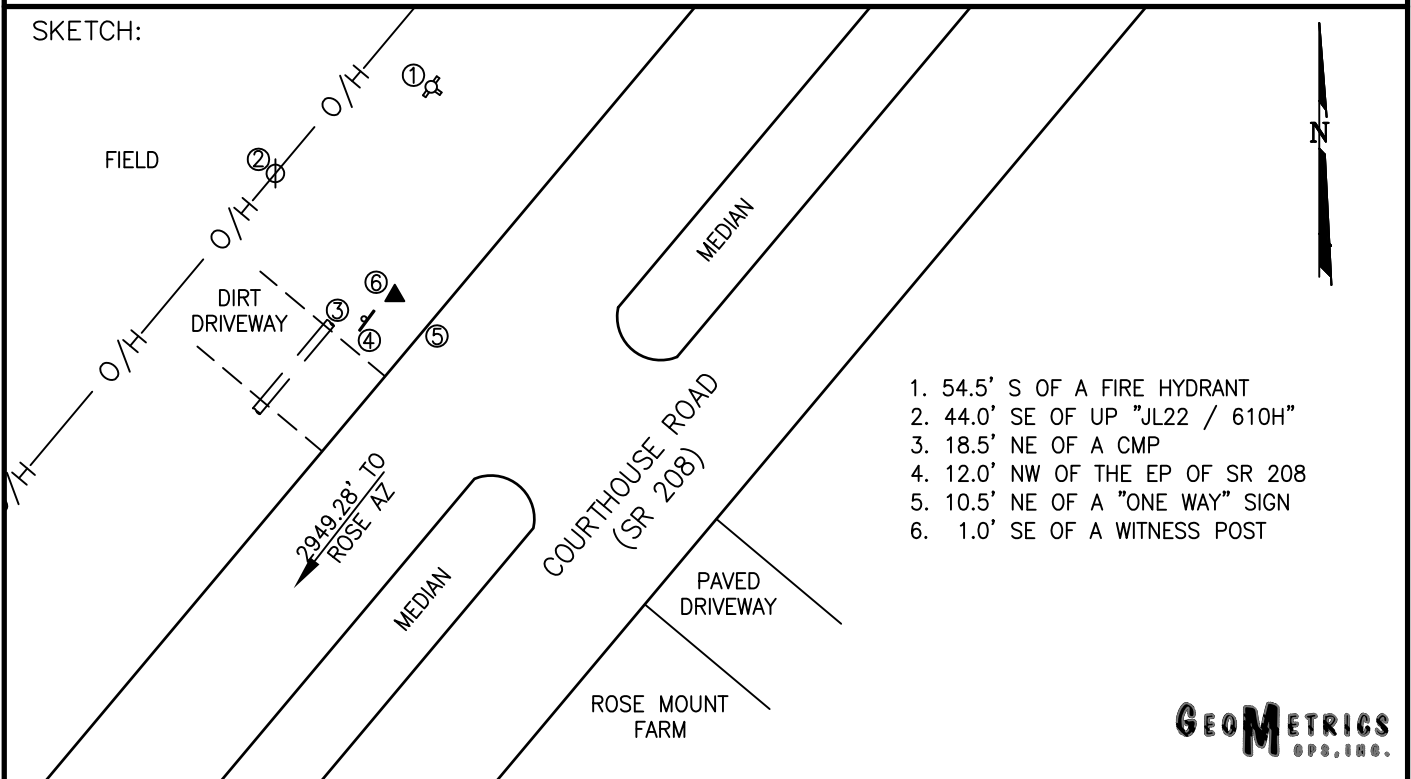
COUNTY	NAME OF STATION	YEAR
SPOTSYLVANIA	ROSE	2006
N: 6765807.69	LAT: 38° 13' 24.59364" N	COMBINED FACTOR: 0.99996519
E: 11750984.68	LONG: 77° 34' 00.68027" W	⊖ ANGLE: 0° 34' 57"
ELEVATION: 277.33' (ESTABLISHED BY GPS)		
DISTANCES AND DIRECTIONS TO AZIMUTH MARKS		
STATION	GROUND DISTANCE	TRUE AZIMUTH
ROSE AZ	2949.28'	200° 59' 56"

THE STATION IS LOCATED ABOUT 9.3 KM (5.8 MILES) SOUTHWEST OF FREDERICKSBURG AND 3.2 KM (2.0 MILES) NORTH OF SPOTSYLVANIA.

TO REACH THE STATION FROM THE INTERSECTION OF SR 208 (COURTHOUSE ROAD) AND SR 613 (BROCK ROAD), AT THE COURTHOUSE, GO NORTHEAST ON SR 208 FOR 3.2 KM (2.0 MILES) TO ITS INTERSECTION WITH A HIGHWAY CROSSOVER AND THE STATION ON THE LEFT, ACROSS FROM THE ROSE MOUNT FARM.

THE STATION IS A STANDARD SPOTSYLVANIA COUNTY, VA ALUMINUM SURVEY DISK SET INTO A Poured IN PLACE CONCRETE MONUMENT 10 INCHES IN DIAMETER, FLUSH WITH GROUND SURFACE AND STAMPED ROSE 2006.

SKETCH:



1. 54.5' S OF A FIRE HYDRANT
2. 44.0' SE OF UP "JL22 / 610H"
3. 18.5' NE OF A CMP
4. 12.0' NW OF THE EP OF SR 208
5. 10.5' NE OF A "ONE WAY" SIGN
6. 1.0' SE OF A WITNESS POST

**GEOMETRICS**  
S.P.S., INC.