

# SPOTSYLVANIA COUNTY VIRGINIA 2007 GEODETIC CONTROL SURVEY

JN 107-065

HORIZONTAL DATUM: NAD 83(2007)  
 VERTICAL DATUM: NAVD 88  
 COORDINATE SYSTEM: VIRGINIA STATE PLANE, NORTH ZONE  
 UNITS: U.S. SURVEY FOOT

HORIZONTAL ORDER: FIRST  
 VERTICAL ORDER: THIRD

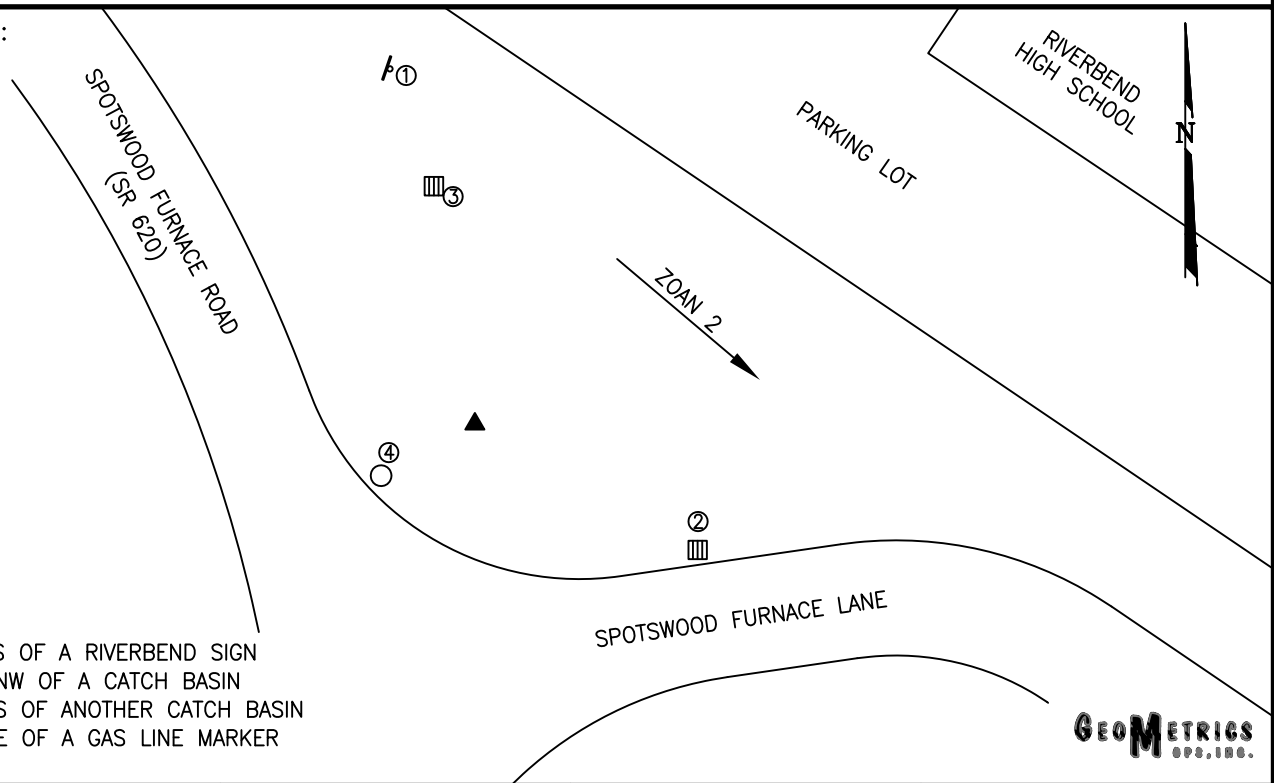
COUNTY	NAME OF STATION	YEAR
SPOTSYLVANIA	RIVERBEND	2007
N: 6791491.73	LAT: 38° 17' 38.77653" N	COMBINED FACTOR: 0.99995247
E: 11748051.79	LONG: 77° 34' 34.19269" W	⊖ ANGLE: 0° 34' 36"
ELEVATION: 352.46' (ESTABLISHED BY GPS)		
DISTANCES AND DIRECTIONS TO AZIMUTH MARKS		
STATION	GROUND DISTANCE	TRUE AZIMUTH
ZOAN 2	1199.26	130° 09' 19"

THE STATION IS LOCATED ABOUT 10.4 KM (6.5 MILES) NORTH OF SPOTSYLVANIA, AND 1.8 KM (1.1 MILES) EAST OF CHANCELLOR.

TO REACH THE STATION FROM THE INTERSECTION OF SR 3 (PLANK ROAD) AND INTERSTATE 95, GO WEST ON SR 3 FOR 5.6 KM (3.5 MILES) TO ITS INTERSECTION WITH SR 620 (HARRISON ROAD). CONTINUE WEST ON SR 3 FOR 0.8 KM (0.5 MILE) TO ITS INTERSECTION WITH SR 620 (SPOTSWOOD FURNACE ROAD). TURN RIGHT AND GO NORTH ON SR 620 FOR 0.2 KM (0.10 MILE) TO THE STATION LOCATED IN FRONT OF THE RIVERBEND HIGH SCHOOL.

THE STATION IS A STANDARD SPOTSYLVANIA COUNTY, VA ALUMINUM SURVEY DISK SET INTO A Poured IN PLACE CONCRETE MONUMENT 10 INCHES IN DIAMETER, FLUSH WITH GROUND SURFACE AND STAMPED RIVERBEND 2007.

SKETCH:



1. 28.0' S OF A RIVERBEND SIGN
2. 20.4' NW OF A CATCH BASIN
3. 18.9' S OF ANOTHER CATCH BASIN
4. 8.5' NE OF A GAS LINE MARKER

**GEOMETRICS**  
GPS, INC.

DRAWN BY: KLS

CHECKED BY: DAR

DATE: 06/2008

APPROX. SCALE: 1" = 50'