

SPOTSYLVANIA COUNTY VIRGINIA 2002/2003 CONTROL SURVEY

JN 102-080

HORIZONTAL DATUM: NAD 83(2007) (REVISED 8-08)
 VERTICAL DATUM: NAVD 88
 COORDINATE SYSTEM: VIRGINIA STATE PLANE, NORTH ZONE
 UNITS: U.S. SURVEY FOOT

HORIZONTAL ORDER: FIRST
 VERTICAL ORDER: THIRD

COUNTY	NAME OF STATION	YEAR
SPOTSYLVANIA	RESORT	2002
N: 6797356.76	LAT: 38° 18' 38.90365"N	COMBINED FACTOR: 0.99995126
E: 11725475.77	LONG: 077° 39' 16.68798"W	⊖ ANGLE: 0° 31' 39"
ELEVATION: 344.32' (ESTABLISHED BY GPS)		
DISTANCES AND DIRECTIONS TO AZIMUTH MARKS		
STATION	GROUND DISTANCE	TRUE AZIMUTH
RESORT	970.20'	88° 38' 45"

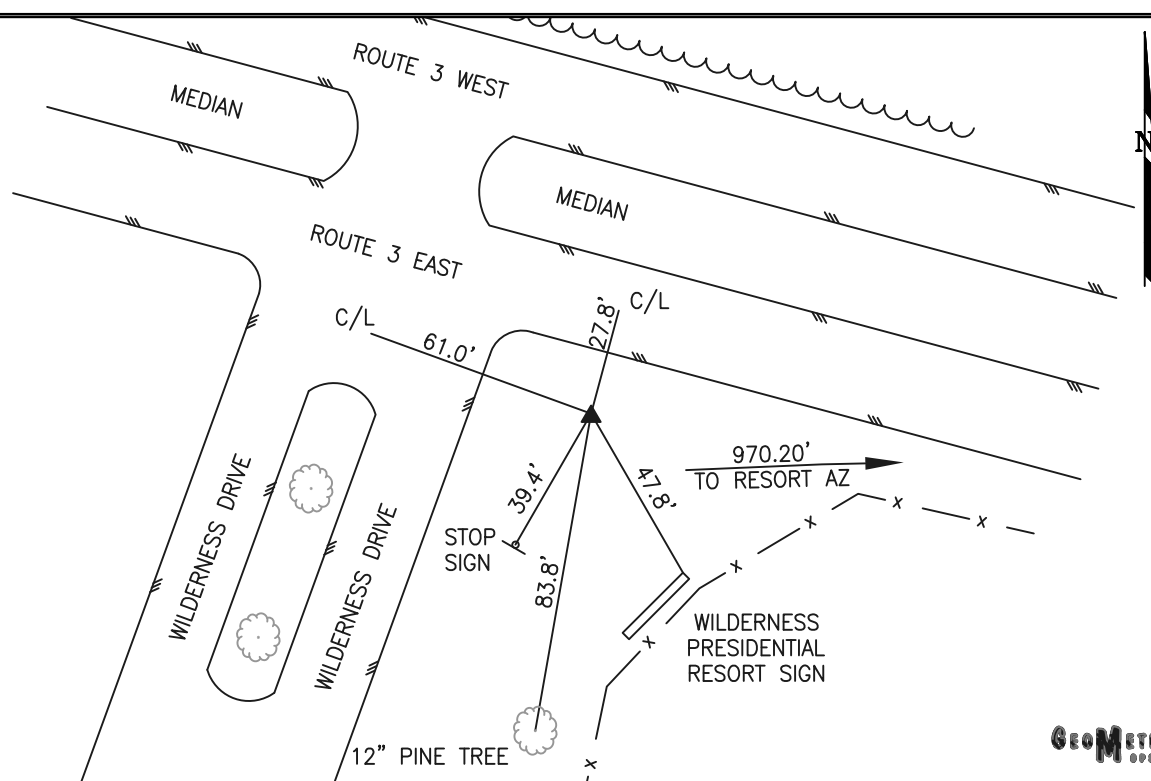
THE STATION IS LOCATED IN NORTHWESTERN SPOTSYLVANIA COUNTY, VIRGINIA APPROXIMATELY 9.5 MILES (15.3 KM) WEST NORTHWEST FROM THE CITY OF FREDERICKSBURG.

TO REACH THE STATION FROM THE INTERSECTION OF STATE ROUTE 3 (PLANK ROAD) AND STATE ROUTE 610 (ELYS FORD ROAD) PROCEED WESTERLY ALONG STATE ROUTE 3 (PLANK ROAD) A DISTANCE OF 1.1 MILES (1.8 KM) TO ITS INTERSECTION WITH WILDERNESS ROAD AND THE ENTRANCE TO THE WILDERNESS PRESIDENTIAL RESORT ON THE LEFT AND THE STATION ON THE LEFT IN THE SOUTHEAST QUADRANT OF THE INTERSECTION.

THE STATION IS A 3 1/2 INCH SPOTSYLVANIA COUNTY, VIRGINIA ALUMINUM SURVEY DISK SET IN A Poured IN PLACE CONCRETE MONUMENT 10 INCHES IN DIAMETER FLUSH WITH THE GROUND SURFACE AND STAMPED RESORT 2002.

STATION RESORT IS INTERVISIBLE WITH STATION RESORT AZ.

SKETCH:



GEOMETRICS
INC., LLC.

DRAWN BY: BCL

CHECKED BY: DAR

DATE: 02/2003

APPROX. SCALE: 1" = 50'