

SPOTSYLVANIA COUNTY VIRGINIA 2005 CONTROL SURVEY

JN 104-085

HORIZONTAL DATUM: NAD 83(2007) (REVISED 8-08)
 VERTICAL DATUM: NAVD 88
 COORDINATE SYSTEM: VIRGINIA STATE PLANE, NORTH ZONE
 UNITS: U.S. SURVEY FOOT

HORIZONTAL ORDER: FIRST
 VERTICAL ORDER: THIRD

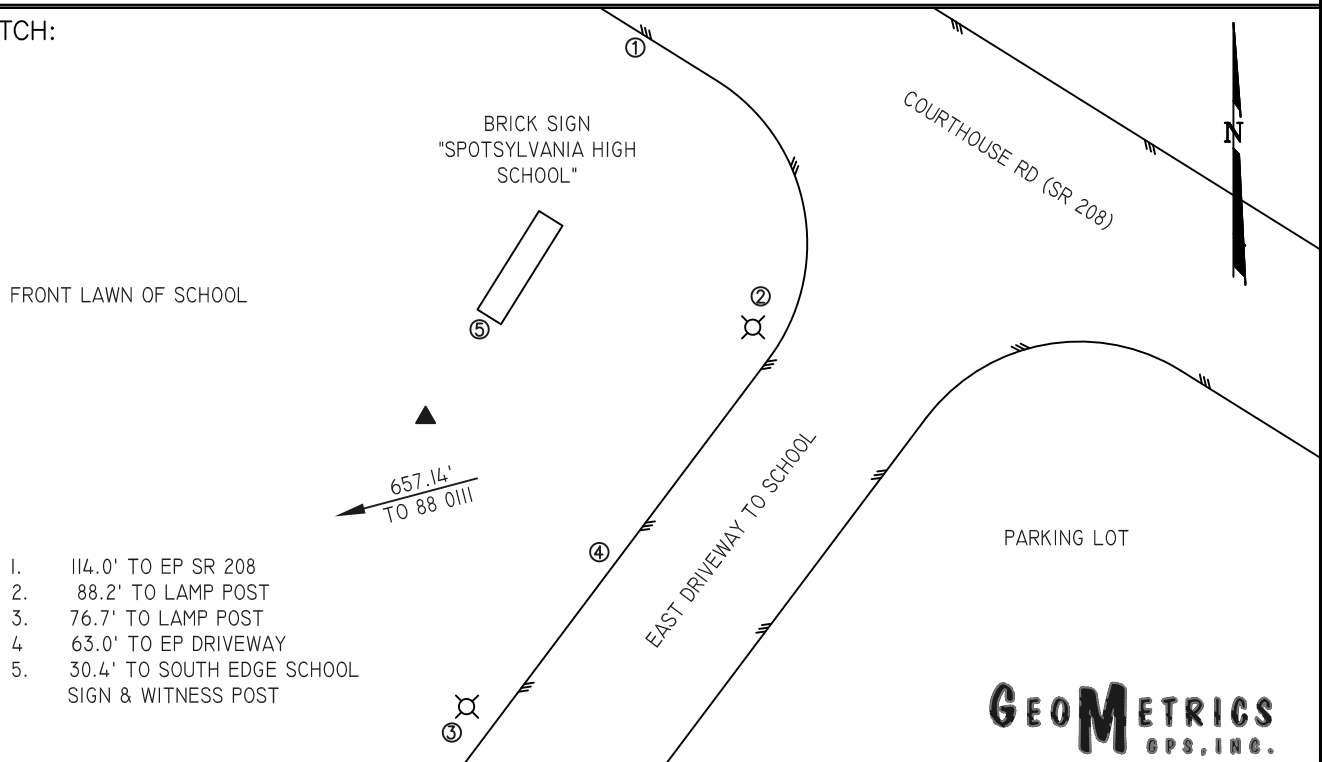
COUNTY	NAME OF STATION	YEAR
SPOTSYLVANIA	POST OAK	2005
N: 6743029.71	LAT: 38° 09' 41.77477" N	COMBINED FACTOR: 0.99997984
E: 11726513.55	LONG: 077° 39' 09.95847" W	⊖ ANGLE: 0° 31' 44"
ELEVATION: 313.10' (ESTABLISHED BY GPS)		
DISTANCES AND DIRECTIONS TO AZIMUTH MARKS		
STATION	GROUND DISTANCE	TRUE AZIMUTH
88 0111	657.14	253°56'59"

THE STATION IS LOCATED IN SPOTSYLVANIA COUNTY, VIRGINIA, APPROXIMATELY 8.8 KM (5.5 MILES) SOUTHWEST OF THE SPOTSYLVANIA COURTHOUSE, AND 7.2 KM (4.5 MILES) WEST OF SNELL.

TO REACH THE STATION FROM THE INTERSECTION OF SR 208 (COURTHOUSE ROAD) AND SR 613 (BROCK ROAD) AT THE SPOTSYLVANIA COURTHOUSE, PROCEED NORTHWEST ON SR 613 FOR 0.8 KM (0.5 MILE) TO ITS INTERSECTION WITH SR 608 (ROBERT E LEE DRIVE). TURN LEFT AND GO SOUTHWEST ON SR 608 FOR 1.9 KM (1.2 MILES) TO ITS INTERSECTION WITH SR 648 (BLOCK HOUSE ROAD). TURN LEFT AND GO SOUTH ON SR 648 FOR 4.7 KM (2.9 MILES) TO ITS INTERSECTION WITH SR 208. TURN RIGHT AND GO WEST ON SR 208 FOR 1.0 KM (0.6 MILE) TO THE FIRST ENTRANCE OF THE SPOTSYLVANIA HIGH SCHOOL. TURN LEFT AND GO SOUTH ALONG THE ENTRANCE ROAD FOR APPROXIMATELY 46 METERS (150 FEET) TO THE STATION ON THE RIGHT.

THE STATION IS A SPOTSYLVANIA COUNTY, VA ALUMINUM SURVEY DISK SET INTO A POURED IN PLACE CONCRETE MONUMENT 10 INCHES IN DIAMETER, FLUSH WITH THE GROUND SURFACE AND STAMPED POST OAK 1995. STATION POST OAK IS INTER-VISIBLE WITH STATION 88 0111.

SKETCH:



DRAWN BY: BCL

CHECKED BY: DAR

DATE: 06/2005

APPROX. SCALE: 1" = 50'