

SPOTSYLVANIA COUNTY VIRGINIA 2002 CONTROL SURVEY

JN 102-040

HORIZONTAL DATUM: NAD 83(2007) (REVISED 8-08)
 VERTICAL DATUM: NAVD 88
 COORDINATE SYSTEM: VIRGINIA STATE PLANE, NORTH ZONE
 UNITS: U.S. SURVEY FOOT

HORIZONTAL ORDER: FIRST
 VERTICAL ORDER: THIRD

COUNTY	NAME OF STATION	YEAR
SPOTSYLVANIA	POST	2002
N: 6770617.07	LAT: 38° 14' 06.88673" N	COMBINED FACTOR: 0.99997225
E: 11798920.67	LONG: 77° 23' 59.29679" W	∅ ANGLE: 0° 41' 11.9"
ELEVATION: 69.98 (ESTABLISHED BY GPS)		
DISTANCES AND DIRECTIONS TO AZIMUTH MARKS		
STATION	GROUND DISTANCE	TRUE AZIMUTH
F 463	1801.65'	238°05'56"

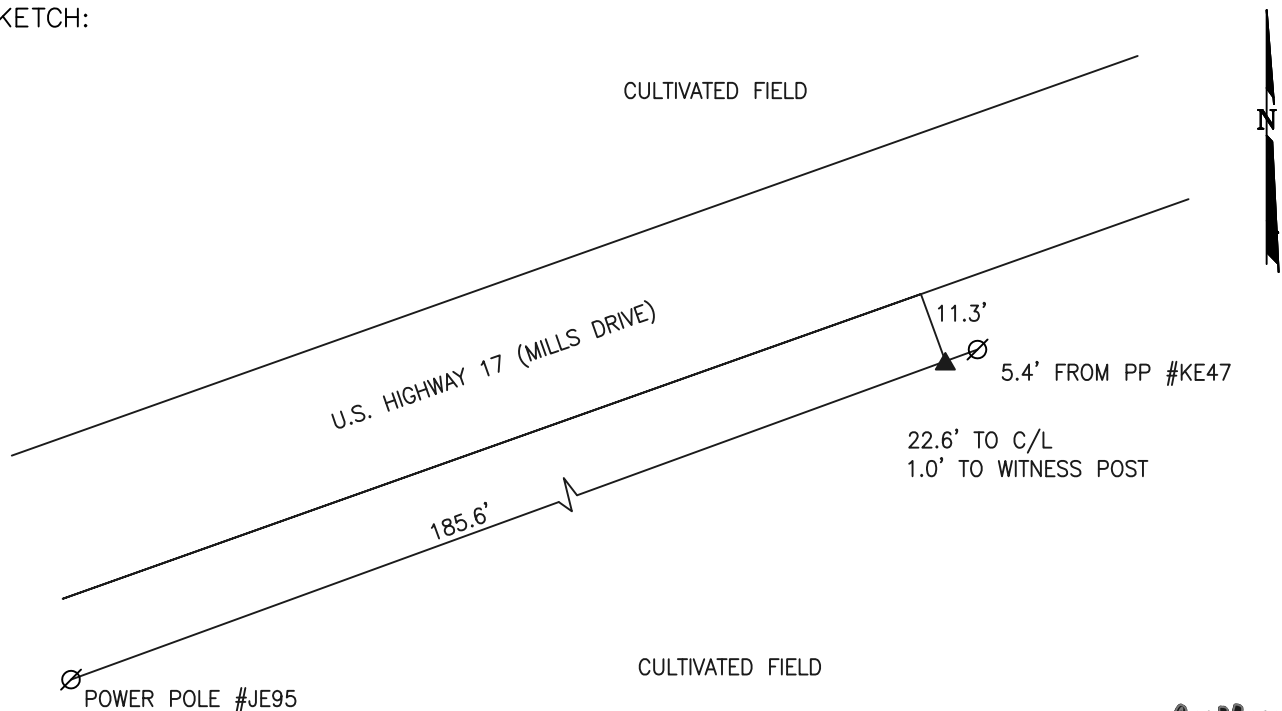
THE STATION IS LOCATED IN SPOTSYLVANIA COUNTY, VIRGINIA APPROXIMATELY 6.5 MILES SOUTHEAST FROM THE CITY OF FREDERICKSBURG.

TO REACH THE STATION FROM THE INTERSECTION OF US HIGHWAY 1 (JEFFERSON DAVIS HIGHWAY) AND US HIGHWAY 17 (MILLS DRIVE) IN MASSAPONAX PROCEED EAST ALONG US HIGHWAY 17 (MILLS DRIVE) A DISTANCE OF APPROXIMATELY 5.8 MILES TO ITS INTERSECTION WITH STATE ROUTE 2 (TIDEWATER TRAIL). CONTINUE STRAIGHT AND PROCEED EAST ALONG US HIGHWAY 17 APPROXIMATELY 0.4 MILE TO THE STATION ON THE RIGHT.

THE STATION IS A 3 1/2 INCH SPOTSYLVANIA COUNTY, VA ALUMINUM SURVEY DISK SET IN A POURED IN PLACE CONCRETE MONUMENT FLUSH WITH THE GROUND SURFACE AND STAMPED POST 2002.

THE STATION IS INTERVISIBLE WITH STATION F 463.

SKETCH:



GEOMETRICS
INC.

DRAWN BY: KNT

CHECKED BY: CEN

DATE: 08/2002

APPROX. SCALE: 1" = 30'