

SPOTSYLVANIA COUNTY, VIRGINIA
E911 GPS SURVEY REVISED 10/2008

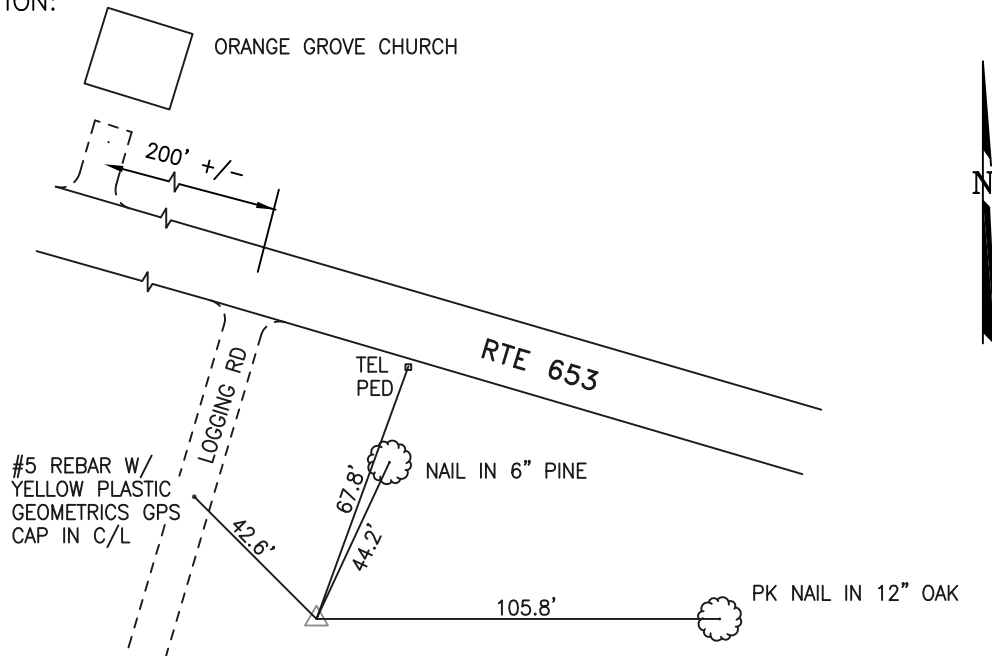
W.O. 95007

MAP PROJECTION: LAMBERT ORDER OF SURVEY: FIRST
NAD 83(2007) * VIRGINIA STATE PLANE COORDINATE SYSTEM * NORTH ZONE

COUNTY	NAME OF STATION		YEAR
ORANGE	PINE		1995
N: 6747689.45	E: 11656882.44	LAT.: 38°10'33.28314"N	LONG.: 77°53'41.38469"W
GRID FACTOR: 0.99997790	SEA LEVEL FACTOR: 0.99998787		ϕ ANGLE: +0°22'39.71"
ESTABLISHED BY: GeoMetrics GPS, INC.	YEAR 1995	DISTANCES AND DIRECTIONS TO REFERENCE MARKS AND PROMINENT OBJECTS OBSERVED AT STATION	
		OBJECT	DISTANCE-FT. MAG. AZIMUTH
VERTICAL DATUM NAVD 88			
ELEVATION (FT.) 359.23			
RECOVERED: NOV 2000			

DESCRIPTION OF STATION:
The station is a Spotsylvania County survey disk set in concrete stamped PINE 1995 located in Orange County, Virginia approximately 5.0 miles southwest of Paytes. To reach the station from the intersection of Route 608 (West Catharpin Road) and Route 601 (Lawyers Road) at Paytes proceed south along Route 601 (Lawyers Road) 3.1 miles to its intersection with Route 652 (Belmont Road). Turn right and proceed south along Route 652 (Belmont Road) 1.6 miles to its intersection with Route 653 (Orange Springs Road). Turn right and proceed west along Route 653 (Orange Springs Road) 2.0 miles to the station on the left. Witness post set S20°W at 0.8 feet.

SKETCH OF STATION:



THIS SURVEY DATA PREPARED
USING 1 meter = 3.280833 feet

GEOMETRICS
GPS, INC.

236 CAMBRIDGE ROAD
FREDERICKSBURG, VIRGINIA
(540) 372-3499

PREPARED BY: EJP	DATE: AUG '95
CHECKED BY: DAR	DATE: AUG '95

NOTE:
IN 2008 THE COORDINATES WERE CONVERTED TO
NAD83(2007) BY APPLYING A COMPUTED SHIFT